

Light efficiency:



Light quality:



Color temperature:



Output: 1487 lm

Peak: 2212 cd

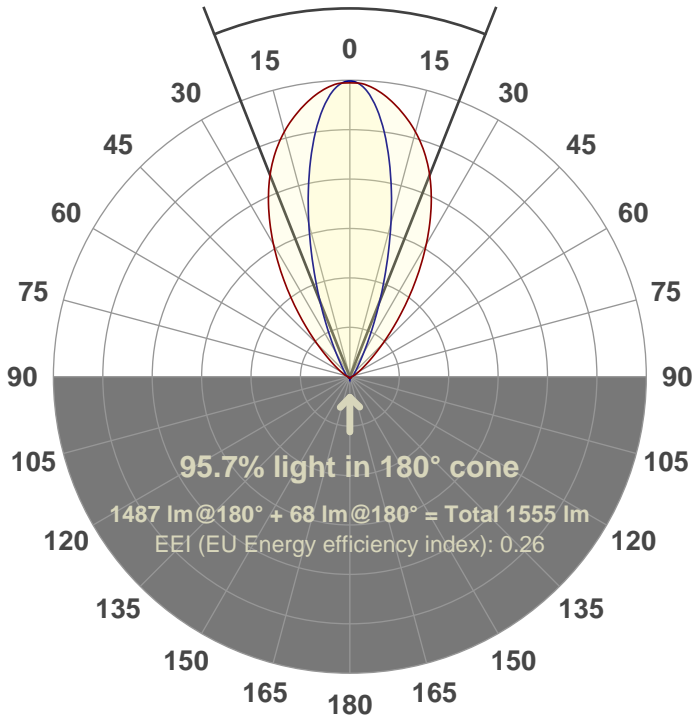
Power: 24.9 W

PF: 1.0



43.2°

Beam angle



Product name:

FL25-CM-RGBW65K-IM-30x60-ELV-SM120-WHITE

Date and time:

10-Aug-18 10:31:27 AM

Additional Information:

LED: RGBW (6500K)

FIXTURE: FL25

FILM: 250262 (30°X60°)

COLOR-AMP: ON

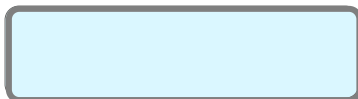
STABILIZED: YES

COLOR (RGBW): WHITE

FWHM: 31.7°X61.3°

PERFORMED BY: ABDULLAH QURESHI

Color

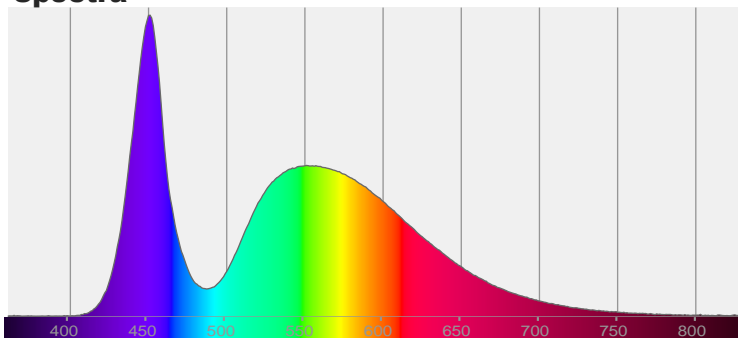


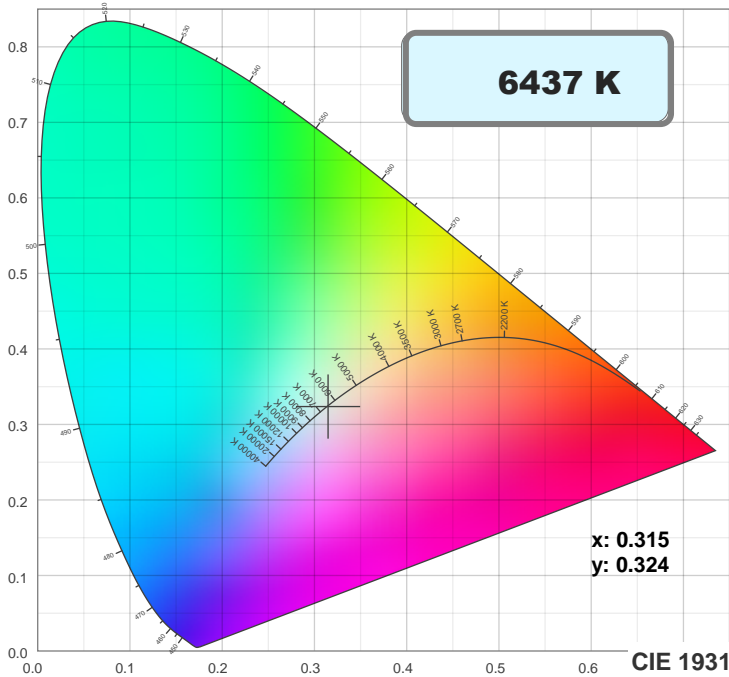
CIE 1931

x: 0.315

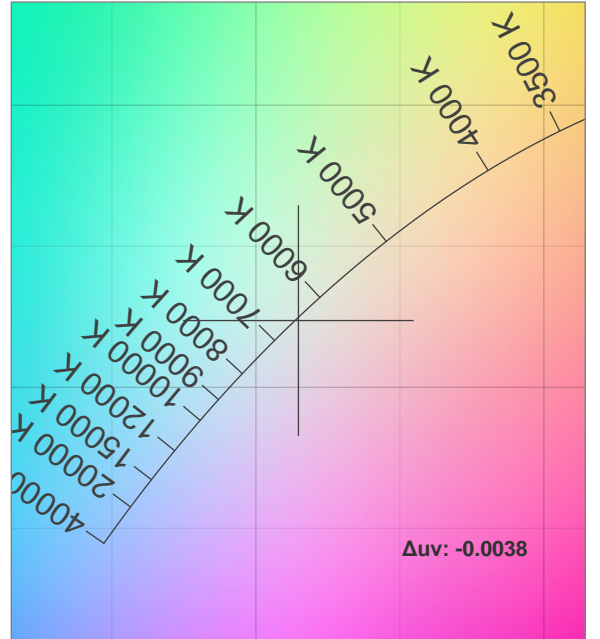
y: 0.324

Spectra

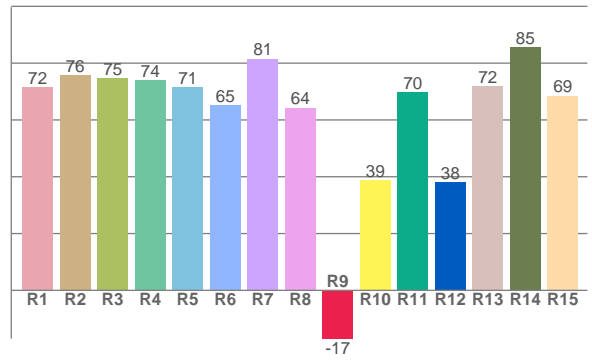
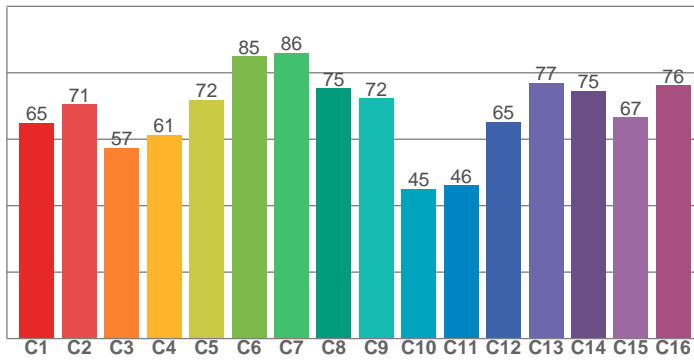




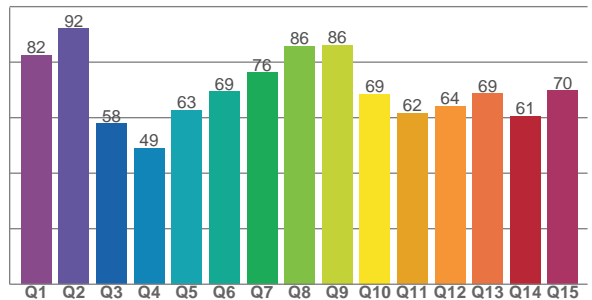
TM30: 67.9



CRI: 72.3 (R1-R8)



CQS: 68.1



CRI R values, only R1-R8 are used to calculate final CRI value

R1	R2	R3	R4	R5	R6	R7	R8	R9	R10	R11	R12	R13	R14	R15
71.6	75.8	74.8	74.0	71.5	65.1	81.5	64.3	-17.0	38.7	69.8	37.9	71.8	85.5	68.5

TM30 C values, 16 binned values out of total of 99 C values

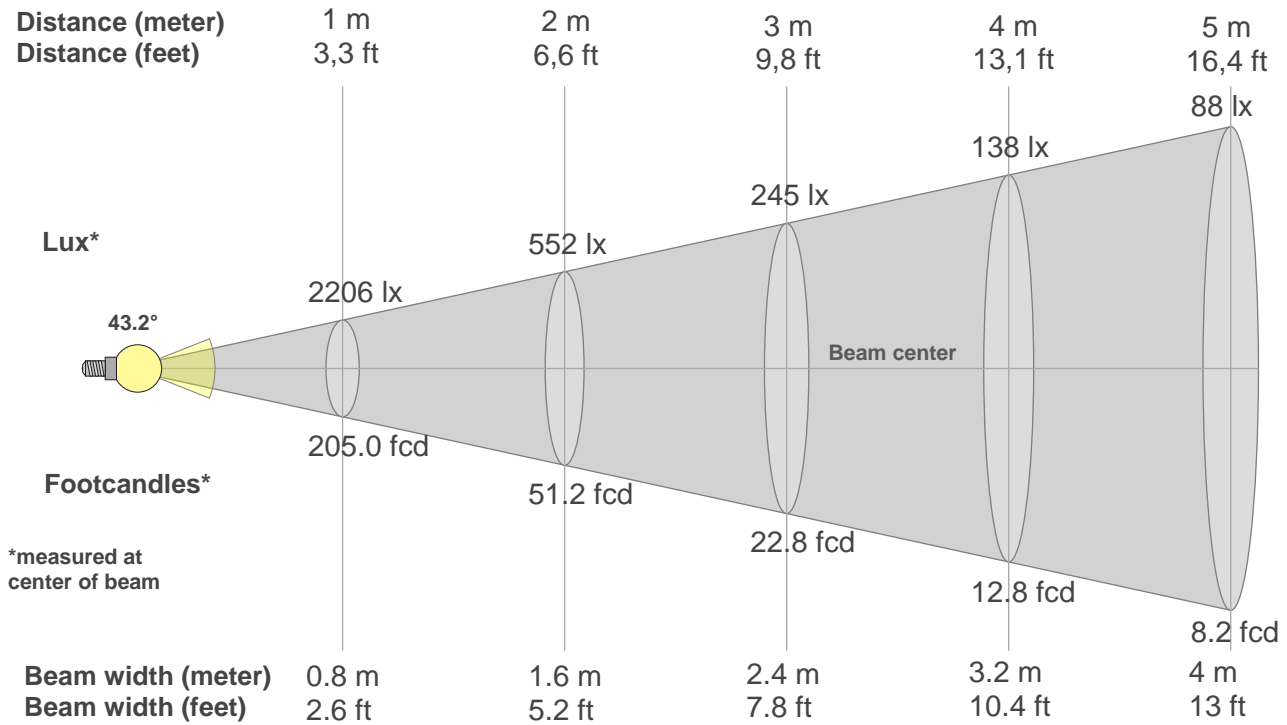
C1	C2	C3	C4	C5	C6	C7	C8	C9	C10	C11	C12	C13	C14	C15	C16
64.9	70.5	57.4	61.3	71.9	84.9	86.0	75.4	72.3	45.0	46.2	65.3	77.0	74.5	66.5	76.3

CQS Q values

Q1	Q2	Q3	Q4	Q5	Q6	Q7	Q8	Q9	Q10	Q11	Q12	Q13	Q14	Q15
82.5	92.1	57.8	49.0	62.8	69.4	76.3	85.9	86.2	68.5	61.6	64.3	68.8	60.6	69.7

Color parameters

Color temperature	Color rendering index	Red component	Color fidelity	Color gamut	Color quality scale	Color coordinate cie 1931	Color coordinate cie 1931	Color coordinate	Color coordinate	Color deviation from black body
CCT	CRI	CRI R9	TM30 Rf	TM30 Rg	CQS	x	y	u	v	Δuv
6437 K	72.3	-17.0	67.9	93.9	68.1	0.315	0.324	0.201	0.311	-0.0038



Beam intensities from 1-20m

1m	2m	3m	4m	5m	6m	7m	8m	9m	10m	11m	12m	13m	14m	15m	16m	17m	18m	19m	20m
3.3ft	6.6ft	9.8ft	13.1ft	16.4ft	19.7ft	23ft	26.2ft	29.5ft	32.8ft	36.1ft	39.4ft	42.7ft	45.9ft	49.2ft	52.5ft	55.8ft	59.1ft	62.3ft	65.6ft
2206lx	552lx	245lx	138lx	88lx	61lx	45lx	34lx	27lx	22lx	18lx	15lx	13lx	11lx	10lx	9lx	8lx	7lx	6lx	6lx
205fcd	51.2fcd	22.8fcd	12.8fcd	8.2fcd	5.7fcd	4.2fcd	3.2fcd	2.5fcd	2fcd	1.7fcd	1.4fcd	1.2fcd	1fcd	0.9fcd	0.8fcd	0.7fcd	0.6fcd	0.6fcd	0.5fcd

Intensities in 0° c-plane

0°	2°	4°	6°	8°	10°	12°	14°	16°	18°	20°	22°	24°	26°	28°	30°	32°	34°	36°	38°
2206	2202	2182	2148	2105	2054	1997	1936	1867	1789	1702	1606	1500	1387	1268	1146	1021	898	779	666
100%	100%	99%	97%	95%	93%	91%	88%	85%	81%	77%	73%	68%	63%	57%	52%	46%	41%	35%	30%

Intensities in 90° c-plane

0°	2°	4°	6°	8°	10°	12°	14°	16°	18°	20°	22°	24°	26°	28°	30°	32°	34°	36°	38°
2206	2188	2117	2002	1854	1677	1486	1290	1094	906	733	580	450	348	269	210	167	136	113	96
100%	99%	96%	91%	84%	76%	67%	58%	50%	41%	33%	26%	20%	16%	12%	10%	8%	6%	5%	4%

Intensities in 180° c-plane

0°	2°	4°	6°	8°	10°	12°	14°	16°	18°	20°	22°	24°	26°	28°	30°	32°	34°	36°	38°
2206	2202	2182	2148	2105	2054	1997	1936	1867	1789	1702	1606	1500	1387	1268	1146	1021	898	779	666
100%	100%	99%	97%	95%	93%	91%	88%	85%	81%	77%	73%	68%	63%	57%	52%	46%	41%	35%	30%

Intensities in 270° c-plane

0°	2°	4°	6°	8°	10°	12°	14°	16°	18°	20°	22°	24°	26°	28°	30°	32°	34°	36°	38°
2206	2188	2117	2002	1854	1677	1486	1290	1094	906	733	580	450	348	269	210	167	136	113	96
100%	99%	96%	91%	84%	76%	67%	58%	50%	41%	33%	26%	20%	16%	12%	10%	8%	6%	5%	4%

Beam angle 50%	Field angle 10%	Cutoff angle 2,5%	Intensity ratio in 120° cone	Intensity ratio in 90° cone
43.2°	76°	111.4°	90.3%	83.2%