

**Light efficiency:**



**Light quality:**



**Color temperature:**

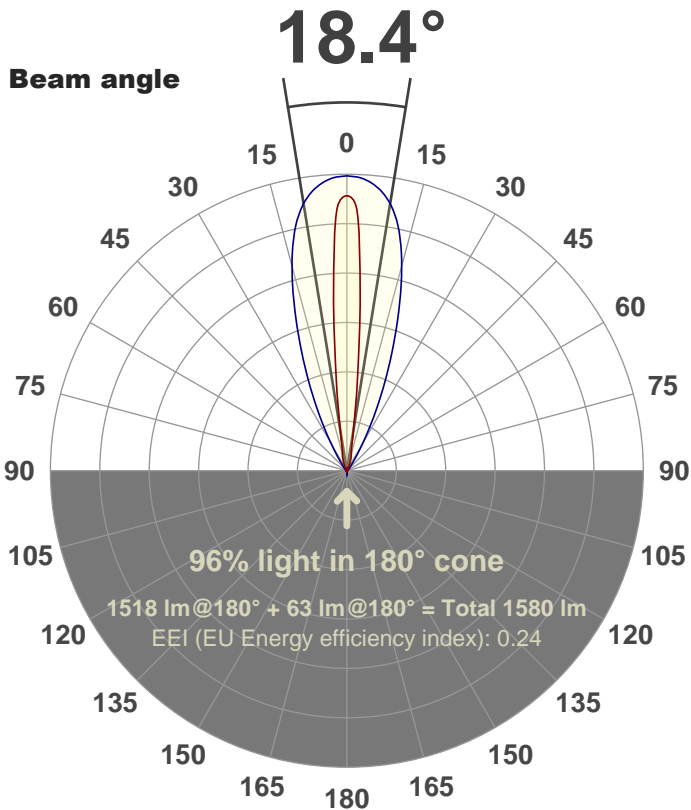


**Output: 1518 lm**

**Peak: 8744 cd**

**Power: 24.9 W**

**PF: 1.0**



**Product name:**

**FL25-CM-RGBW65K-IM-40X10-ELV-SM120-WHITE**

**Date and time:**

**10-Aug-18 2:57:37 PM**

**Additional Information:**

**LED: RGBW (6500K)**

**FIXTURE: FL25**

**FILM: 250269 (40°X10°)**

**COLOR-AMP: ON**

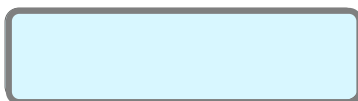
**STABILIZED: YES**

**COLOR (RGBW): WHITE**

**FWHM: 38.8°X10.1°**

**PERFORMED BY: ABDULLAH QURESHI**

**Color**

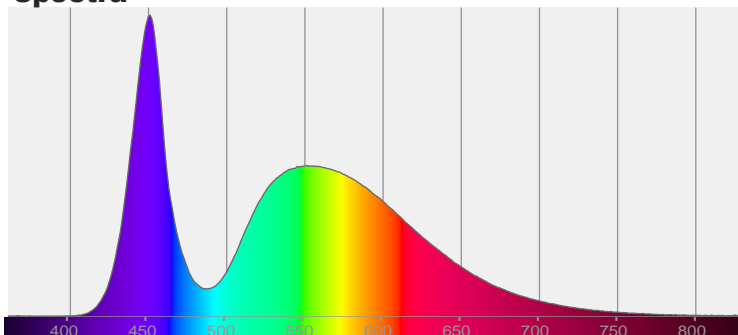


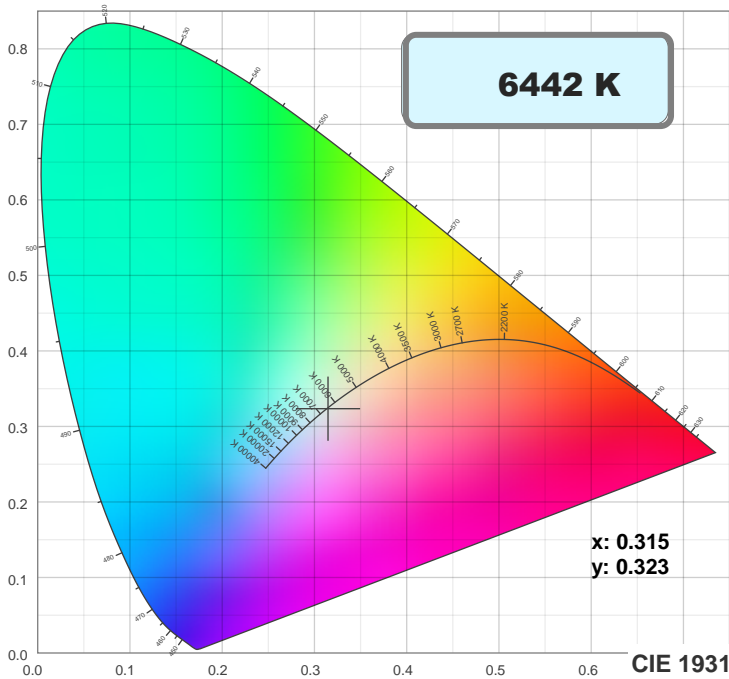
**CIE 1931**

**x: 0.315**

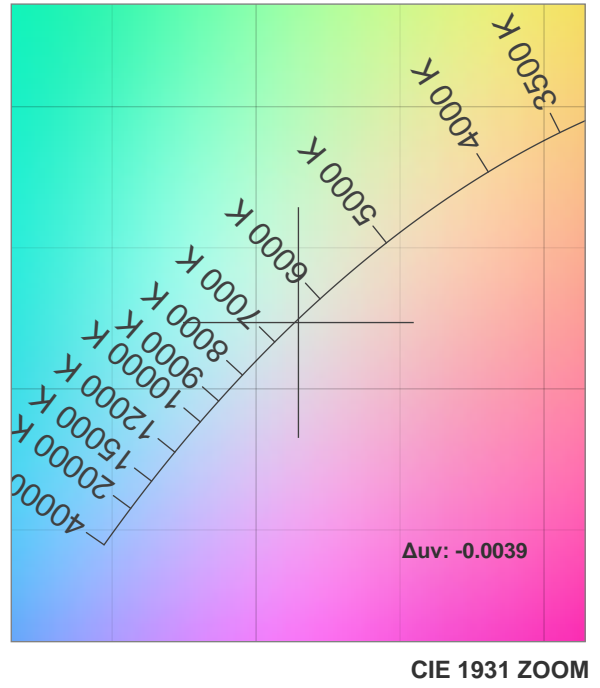
**y: 0.323**

**Spectra**

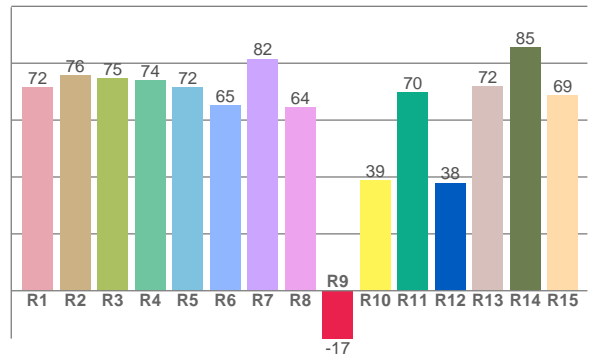
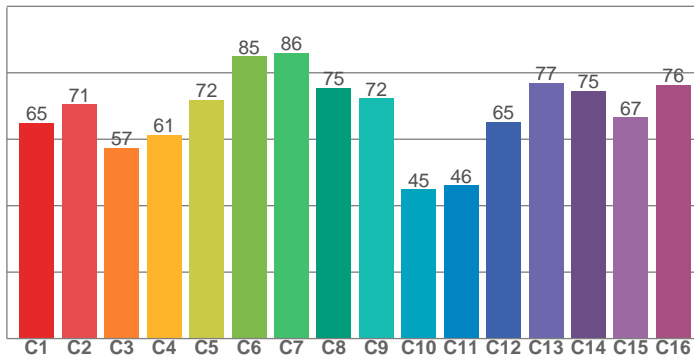




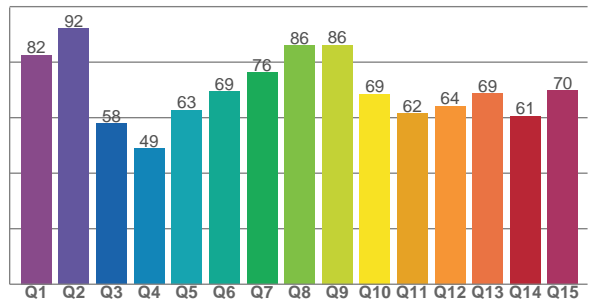
**TM30: 67.9**



**CRI: 72.3 (R1-R8)**



**CQS: 68.1**



**CRI R values, only R1-R8 are used to calculate final CRI value**

R1	R2	R3	R4	R5	R6	R7	R8	R9	R10	R11	R12	R13	R14	R15
71.6	75.8	74.8	74.0	71.5	65.1	81.5	64.4	-16.8	38.8	69.8	37.9	71.9	85.5	68.6

**TM30 C values, 16 binned values out of total of 99 C values**

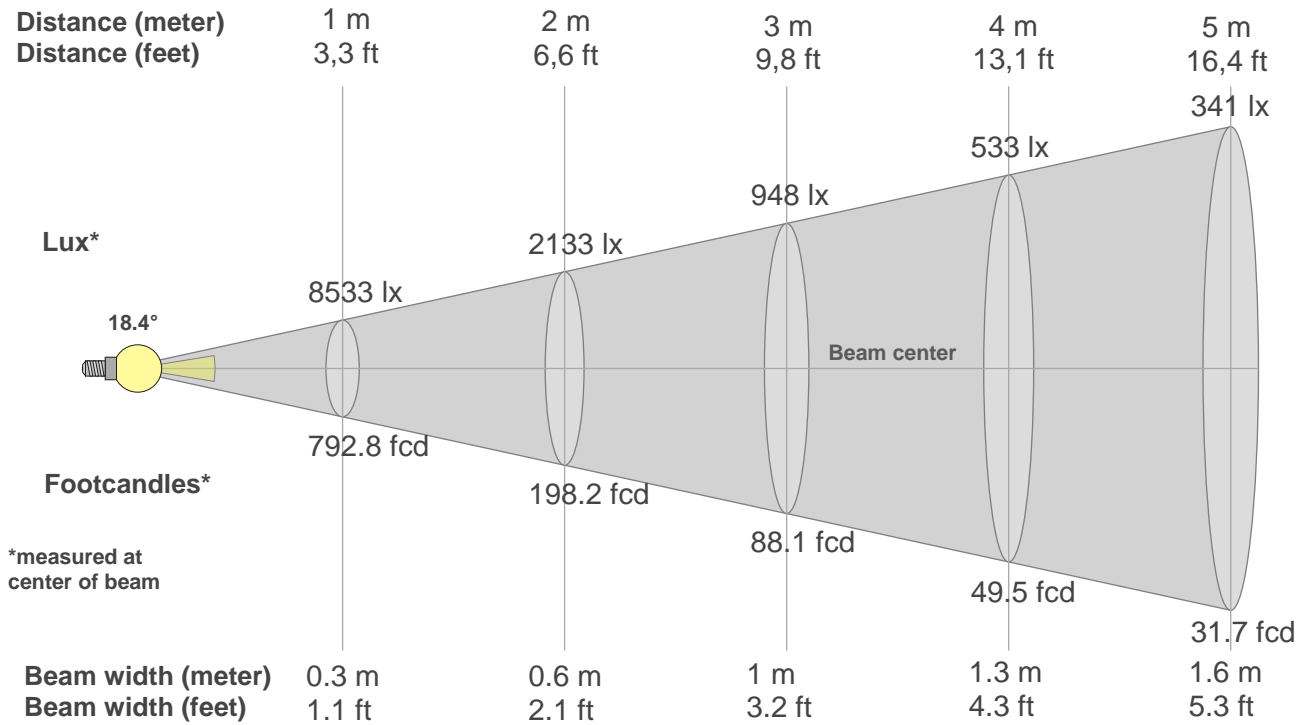
C1	C2	C3	C4	C5	C6	C7	C8	C9	C10	C11	C12	C13	C14	C15	C16
64.9	70.5	57.4	61.4	71.9	85.0	86.0	75.4	72.3	44.9	46.1	65.2	77.0	74.6	66.5	76.3

**CQS Q values**

Q1	Q2	Q3	Q4	Q5	Q6	Q7	Q8	Q9	Q10	Q11	Q12	Q13	Q14	Q15
82.5	92.1	57.8	48.9	62.8	69.4	76.3	85.9	86.1	68.5	61.5	64.2	68.7	60.6	69.7

## Color parameters

Color temperature	Color rendering index	Red component	Color fidelity	Color gamut	Color quality scale	Color coordinate cie 1931	Color coordinate cie 1931	Color coordinate	Color coordinate	Color deviation from black body
CCT	CRI	CRI R9	TM30 Rf	TM30 Rg	CQS	x	y	u	v	Δuv
<b>6442 K</b>	<b>72.3</b>	<b>-16.8</b>	<b>67.9</b>	<b>93.9</b>	<b>68.1</b>	<b>0.315</b>	<b>0.323</b>	<b>0.201</b>	<b>0.310</b>	<b>-0.0039</b>



### Beam intensities from 1-20m

1m	2m	3m	4m	5m	6m	7m	8m	9m	10m	11m	12m	13m	14m	15m	16m	17m	18m	19m	20m
3.3ft	6.6ft	9.8ft	13.1ft	16.4ft	19.7ft	23ft	26.2ft	29.5ft	32.8ft	36.1ft	39.4ft	42.7ft	45.9ft	49.2ft	52.5ft	55.8ft	59.1ft	62.3ft	65.6ft
8533lx	2133lx	948lx	533lx	341lx	237lx	174lx	133lx	105lx	85lx	71lx	59lx	50lx	44lx	38lx	33lx	30lx	26lx	24lx	21lx
792.8fcd	198.2fcd	88.1fcd	49.5fcd	31.7fcd	22fcd	16.2fcd	12.4fcd	9.8fcd	7.9fcd	6.6fcd	5.5fcd	4.7fcd	4fcd	3.5fcd	3.1fcd	2.7fcd	2.4fcd	2.2fcd	2fcd

### Intensities in 0° c-plane

0°	1°	2°	3°	4°	5°	6°	7°	8°	9°	10°	11°	12°	13°	14°	15°	16°	17°	18°	19°
8533	7836	7836	6728	5599	4489	3387	2491	1860	1293	1043	793	691	607	551	511	472	433	394	351
100%	92%	92%	79%	66%	53%	40%	29%	22%	15%	12%	9%	8%	7%	6%	6%	6%	5%	5%	4%

### Intensities in 90° c-plane

0°	1°	2°	3°	4°	5°	6°	7°	8°	9°	10°	11°	12°	13°	14°	15°	16°	17°	18°	19°
8533	8724	8705	8673	8613	8551	8450	8348	8202	8043	7845	7607	7347	7011	6675	6268	5857	5424	4982	4547
100%	102%	102%	102%	101%	100%	99%	98%	96%	94%	92%	89%	86%	82%	78%	73%	69%	64%	58%	53%

### Intensities in 180° c-plane

0°	1°	2°	3°	4°	5°	6°	7°	8°	9°	10°	11°	12°	13°	14°	15°	16°	17°	18°	19°
8533	7836	7836	6728	5599	4489	3387	2491	1860	1293	1043	793	691	607	551	511	472	433	394	351
100%	92%	92%	79%	66%	53%	40%	29%	22%	15%	12%	9%	8%	7%	6%	6%	6%	5%	5%	4%

### Intensities in 270° c-plane

0°	1°	2°	3°	4°	5°	6°	7°	8°	9°	10°	11°	12°	13°	14°	15°	16°	17°	18°	19°
8533	8724	8705	8673	8613	8551	8450	8348	8202	8043	7845	7607	7347	7011	6675	6268	5857	5424	4982	4547
100%	102%	102%	102%	101%	100%	99%	98%	96%	94%	92%	89%	86%	82%	78%	73%	69%	64%	58%	53%

Beam angle 50%	Field angle 10%	Cutoff angle 2,5%	Intensity ratio in 120° cone	Intensity ratio in 90° cone
18.4°	34°	58.2°	91.5%	88.1%