

Light efficiency:



Light quality:



Color temperature:



Output: 889 lm

Peak: 787 cd

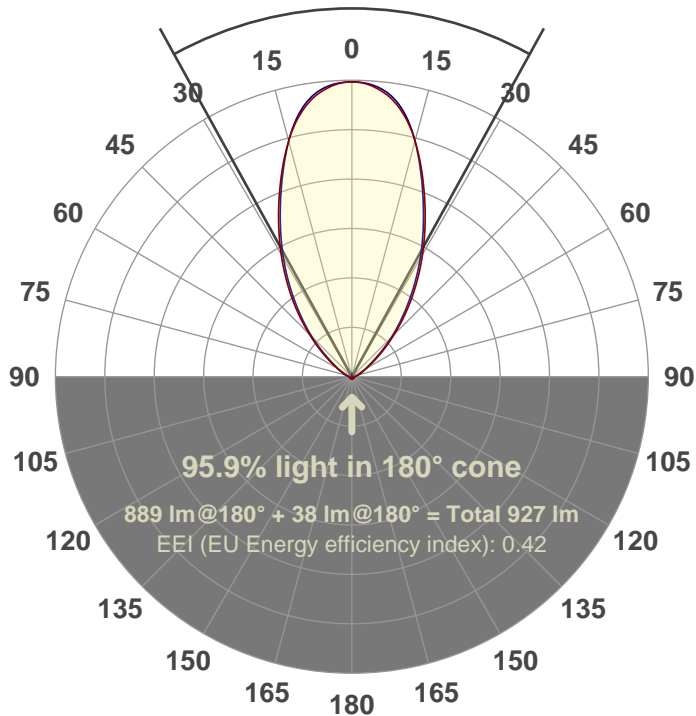
Power: 24.9 W

PF: 1.0



57.7°

Beam angle



Product name:

FL25-CM-RGBW65K-IM-60-ELV-SM120-GREEN

Date and time:

04-Jul-18 10:40:37 AM

Additional Information:

LED: RGBW (6500K)

FIXTURE: FL25

FILM: 250258 (60°)

COLOR-AMP: ON

STABILIZED: YES

COLOR (RGBW): GREEN

PERFORMED BY: ABDULLAH QURESHI

Color

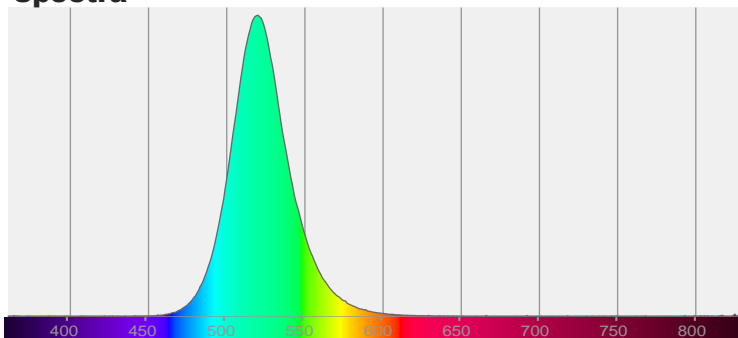


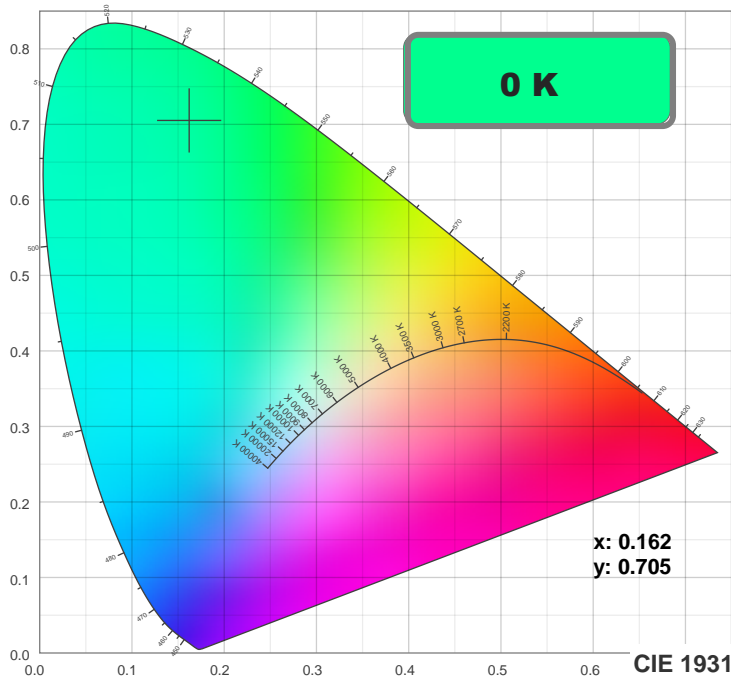
CIE 1931

x: 0.162

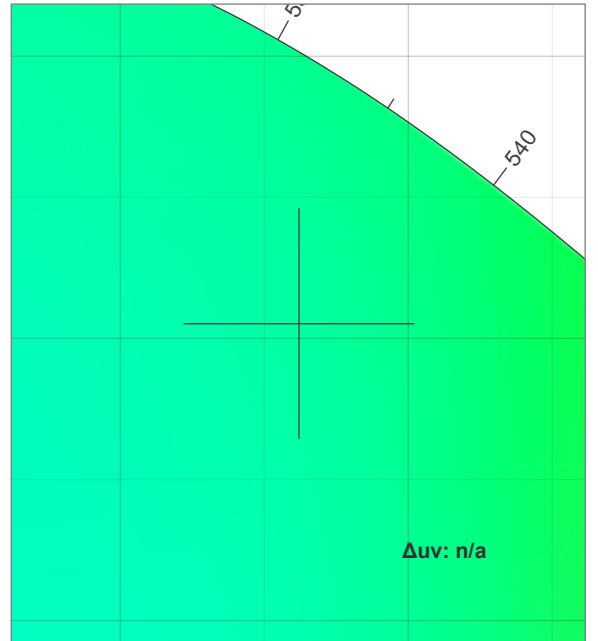
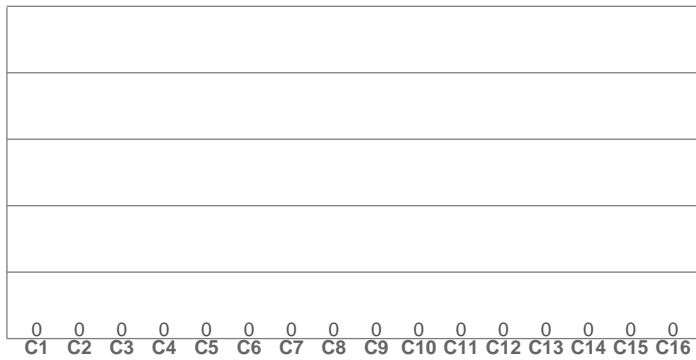
y: 0.705

Spectra



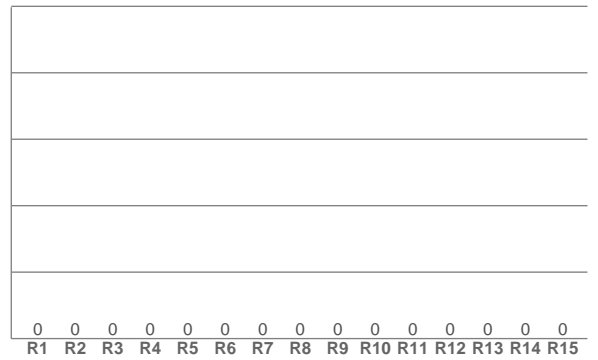


TM30: 0.0

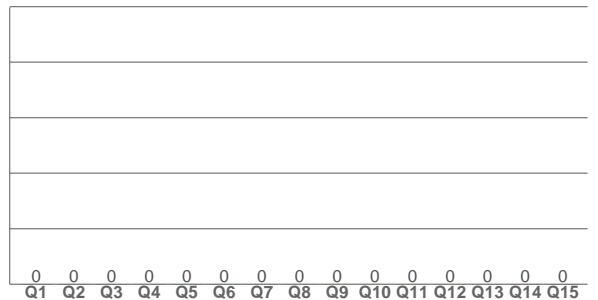


Δuv: n/a

CRI: 0.0 (R1-R8)



CQS: 0.0



CRI R values, only R1-R8 are used to calculate final CRI value

R1	R2	R3	R4	R5	R6	R7	R8	R9	R10	R11	R12	R13	R14	R15
0.0	0.0	0.0	0.0	0.0	0.0	0.0	0.0	0.0	0.0	0.0	0.0	0.0	0.0	0.0

TM30 C values, 16 binned values out of total of 99 C values

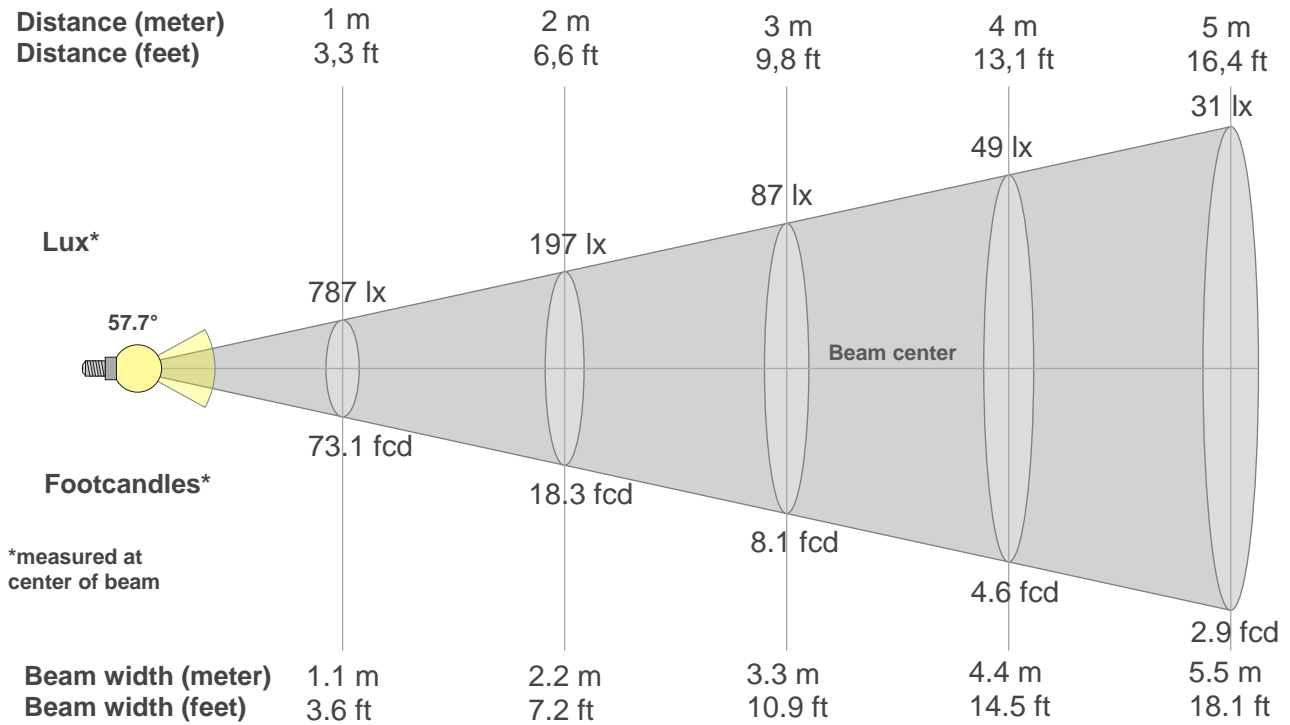
C1	C2	C3	C4	C5	C6	C7	C8	C9	C10	C11	C12	C13	C14	C15	C16
0.0	0.0	0.0	0.0	0.0	0.0	0.0	0.0	0.0	0.0	0.0	0.0	0.0	0.0	0.0	0.0

CQS Q values

Q1	Q2	Q3	Q4	Q5	Q6	Q7	Q8	Q9	Q10	Q11	Q12	Q13	Q14	Q15
0.0	0.0	0.0	0.0	0.0	0.0	0.0	0.0	0.0	0.0	0.0	0.0	0.0	0.0	0.0

Color parameters

Color temperature	Color rendering index	Red component	Color fidelity	Color gamut	Color quality scale	Color coordinate cie 1931	Color coordinate cie 1931	Color coordinate	Color coordinate	Color deviation from black body
CCT	CRI	CRI R9	TM30 Rf	TM30 Rg	CQS	x	y	u	v	Δuv
0 K	0.0	0.0	0.0	0.0	0.0	0.162	0.705	0.058	0.380	n/a



Beam intensities from 1-20m

1m	2m	3m	4m	5m	6m	7m	8m	9m	10m	11m	12m	13m	14m	15m	16m	17m	18m	19m	20m
3.3ft	6.6ft	9.8ft	13.1ft	16.4ft	19.7ft	23ft	26.2ft	29.5ft	32.8ft	36.1ft	39.4ft	42.7ft	45.9ft	49.2ft	52.5ft	55.8ft	59.1ft	62.3ft	65.6ft
787lx	197lx	87lx	49lx	31lx	22lx	16lx	12lx	10lx	8lx	7lx	5lx	5lx	4lx	3lx	3lx	3lx	2lx	2lx	2lx
73.1fcd	18.3fcd	8.1fcd	4.6fcd	2.9fcd	2fcd	1.5fcd	1.1fcd	0.9fcd	0.7fcd	0.6fcd	0.5fcd	0.4fcd	0.4fcd	0.3fcd	0.3fcd	0.3fcd	0.2fcd	0.2fcd	0.2fcd

Intensities in 0° c-plane

0°	5°	10°	15°	20°	25°	30°	35°	40°	45°	50°	55°	60°	65°	70°	75°	80°	85°	90°	95°
787	773	729	652	556	464	378	298	225	161	109	70	45	32	23	16	12	8	7	0
100%	98%	93%	83%	71%	59%	48%	38%	29%	20%	14%	9%	6%	4%	3%	2%	1%	1%	1%	0%

Intensities in 90° c-plane

0°	5°	10°	15°	20°	25°	30°	35°	40°	45°	50°	55°	60°	65°	70°	75°	80°	85°	90°	95°
787	777	735	651	549	452	365	284	212	151	98	62	42	30	22	16	11	8	6	0
100%	99%	93%	83%	70%	57%	46%	36%	27%	19%	12%	8%	5%	4%	3%	2%	1%	1%	1%	0%

Intensities in 180° c-plane

0°	5°	10°	15°	20°	25°	30°	35°	40°	45°	50°	55°	60°	65°	70°	75°	80°	85°	90°	95°
787	773	729	652	556	464	378	298	225	161	109	70	45	32	23	16	12	8	7	0
100%	98%	93%	83%	71%	59%	48%	38%	29%	20%	14%	9%	6%	4%	3%	2%	1%	1%	1%	0%

Intensities in 270° c-plane

0°	5°	10°	15°	20°	25°	30°	35°	40°	45°	50°	55°	60°	65°	70°	75°	80°	85°	90°	95°
787	777	735	651	549	452	365	284	212	151	98	62	42	30	22	16	11	8	6	0
100%	99%	93%	83%	70%	57%	46%	36%	27%	19%	12%	8%	5%	4%	3%	2%	1%	1%	1%	0%

Beam angle 50%	Field angle 10%	Cutoff angle 2,5%	Intensity ratio in 120° cone	Intensity ratio in 90° cone
57.7°	106.2°	144.2°	89.7%	77.5%