

Light efficiency:



Light quality:



Color temperature:

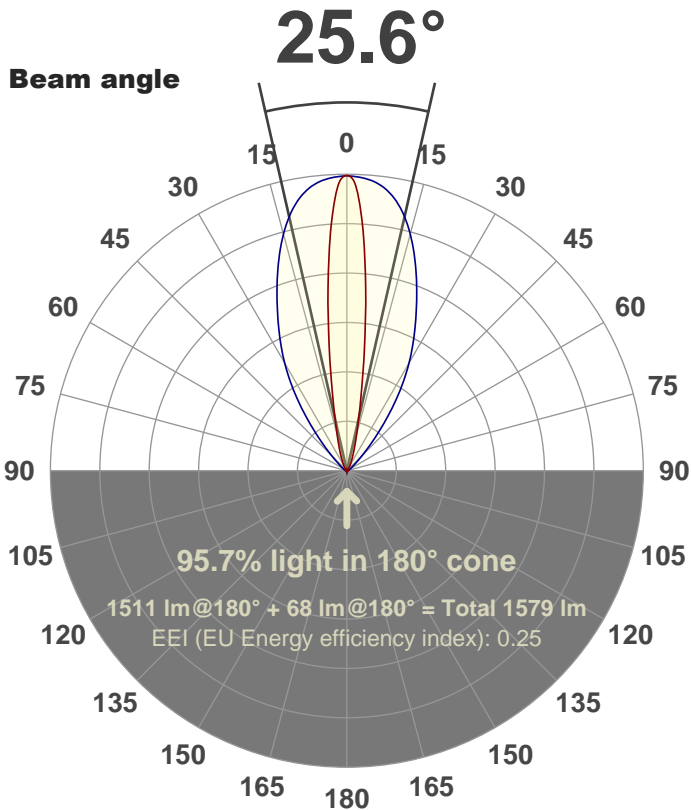


Output: 1511 lm

Peak: 4628 cd

Power: 24.7 W

PF: 1.0



Product name:

FL25-CM-RGBW65K-IM-60X10-ELV-SM120-WHITE

Date and time:

10-Aug-18 3:14:12 PM

Additional Information:

LED: RGBW (6500K)

FIXTURE: FL25

FILM: 250265 (60°X10°)

COLOR-AMP: ON

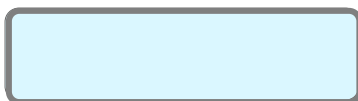
STABILIZED: YES

COLOR (RGBW): WHITE

FWHM: 53.8°X14.4°

PERFORMED BY: ABDULLAH QURESHI

Color

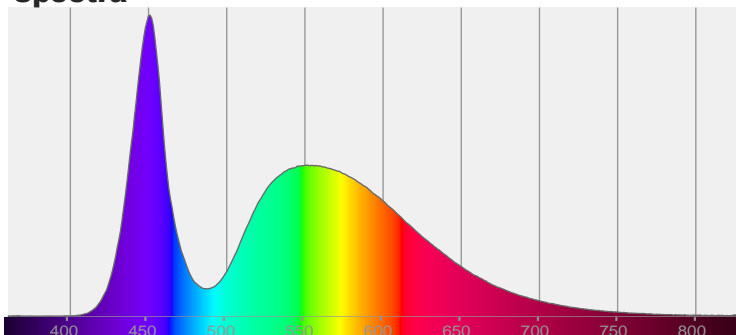


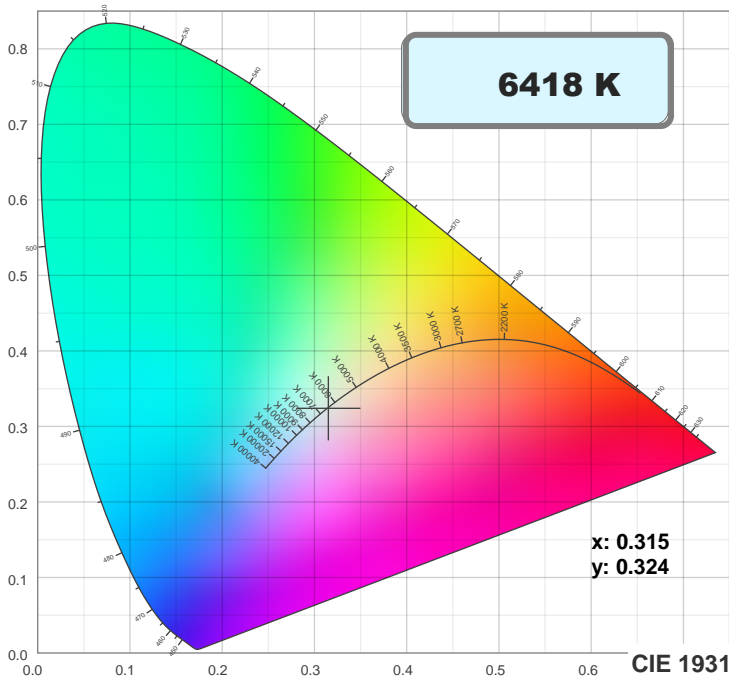
CIE 1931

x: 0.315

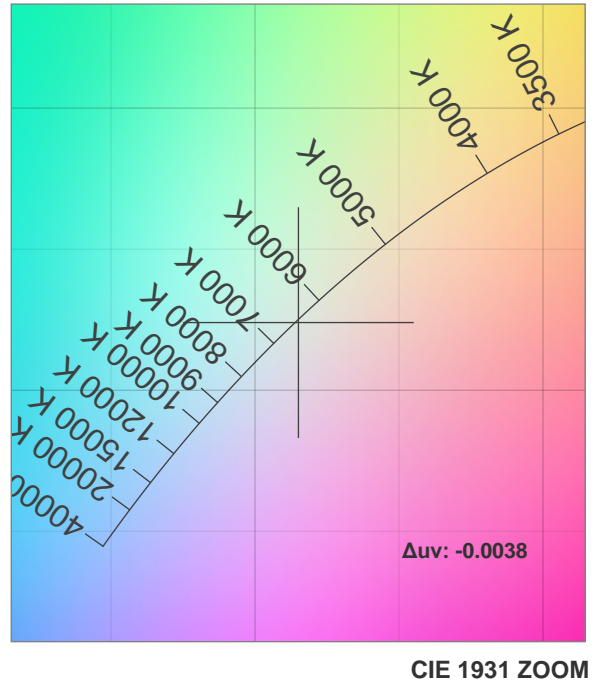
y: 0.324

Spectra

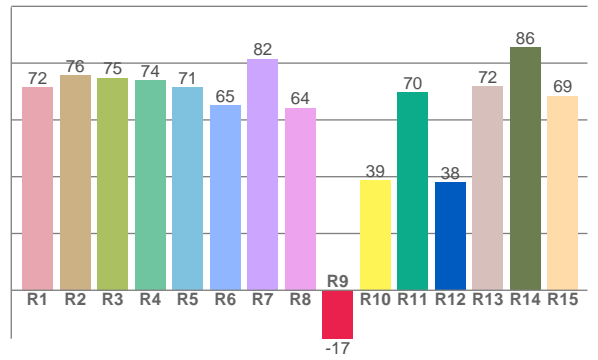
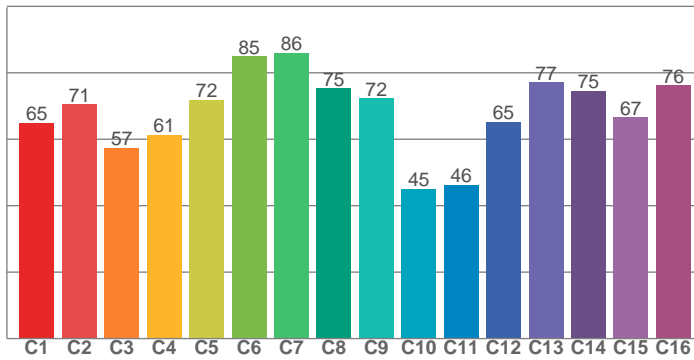




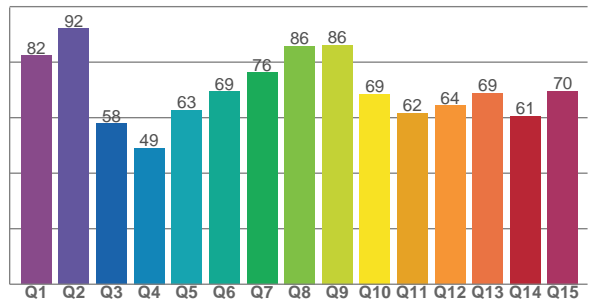
TM30: 67.9



CRI: 72.3 (R1-R8)



CQS: 68.1



CRI R values, only R1-R8 are used to calculate final CRI value

R1	R2	R3	R4	R5	R6	R7	R8	R9	R10	R11	R12	R13	R14	R15
71.5	75.8	74.8	73.9	71.5	65.1	81.5	64.3	-17.0	38.8	69.8	37.9	71.8	85.5	68.5

TM30 C values, 16 binned values out of total of 99 C values

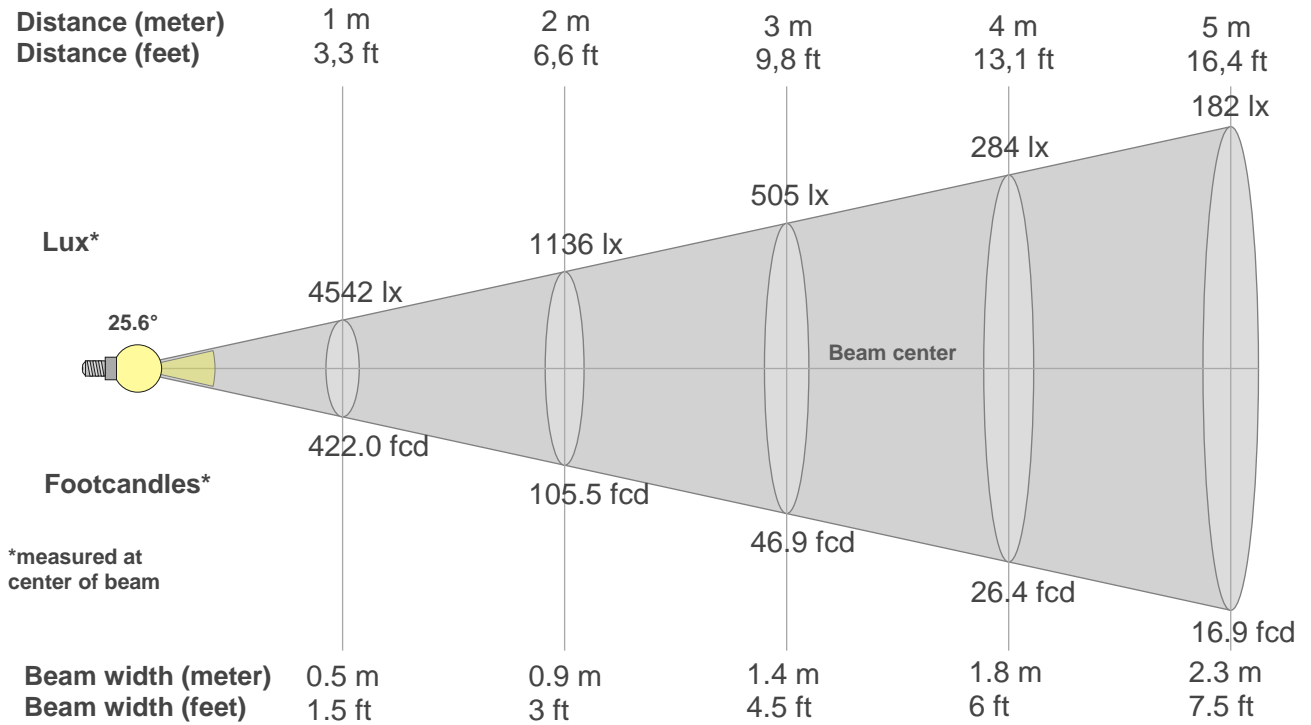
C1	C2	C3	C4	C5	C6	C7	C8	C9	C10	C11	C12	C13	C14	C15	C16
64.9	70.5	57.4	61.4	71.9	84.9	85.9	75.4	72.3	45.0	46.2	65.3	77.1	74.6	66.5	76.3

CQS Q values

Q1	Q2	Q3	Q4	Q5	Q6	Q7	Q8	Q9	Q10	Q11	Q12	Q13	Q14	Q15
82.4	92.1	57.8	49.0	62.8	69.4	76.2	85.9	86.2	68.6	61.6	64.3	68.8	60.6	69.7

Color parameters

Color temperature	Color rendering index	Red component	Color fidelity	Color gamut	Color quality scale	Color coordinate cie 1931	Color coordinate cie 1931	Color coordinate	Color coordinate	Color deviation from black body
CCT	CRI	CRI R9	TM30 Rf	TM30 Rg	CQS	x	y	u	v	Δuv
6418 K	72.3	-17.0	67.9	93.9	68.1	0.315	0.324	0.201	0.311	-0.0038



Beam intensities from 1-20m

1m	2m	3m	4m	5m	6m	7m	8m	9m	10m	11m	12m	13m	14m	15m	16m	17m	18m	19m	20m
3.3ft	6.6ft	9.8ft	13.1ft	16.4ft	19.7ft	23ft	26.2ft	29.5ft	32.8ft	36.1ft	39.4ft	42.7ft	45.9ft	49.2ft	52.5ft	55.8ft	59.1ft	62.3ft	65.6ft
4542lx	1136lx	505lx	284lx	182lx	126lx	93lx	71lx	56lx	45lx	38lx	32lx	27lx	23lx	20lx	18lx	16lx	14lx	13lx	11lx
422fcd	105.5fcd	46.9fcd	26.4fcd	16.9fcd	11.7fcd	8.6fcd	6.6fcd	5.2fcd	4.2fcd	3.5fcd	2.9fcd	2.5fcd	2.2fcd	1.9fcd	1.6fcd	1.5fcd	1.3fcd	1.2fcd	1.1fcd

Intensities in 0° c-plane

0°	2°	4°	6°	8°	10°	12°	14°	16°	18°	20°	22°	24°	26°	28°	30°	32°	34°	36°	38°
4542	4364	3710	2838	2014	1393	972	700	523	401	311	243	191	153	125	102	85	71	61	53
100%	96%	82%	62%	44%	31%	21%	15%	12%	9%	7%	5%	4%	3%	3%	2%	2%	2%	1%	1%

Intensities in 90° c-plane

0°	2°	4°	6°	8°	10°	12°	14°	16°	18°	20°	22°	24°	26°	28°	30°	32°	34°	36°	38°
4542	4617	4589	4538	4454	4332	4167	3960	3722	3464	3197	2930	2672	2427	2190	1953	1705	1449	1193	950
100%	102%	101%	100%	98%	95%	92%	87%	82%	76%	70%	65%	59%	53%	48%	43%	38%	32%	26%	21%

Intensities in 180° c-plane

0°	2°	4°	6°	8°	10°	12°	14°	16°	18°	20°	22°	24°	26°	28°	30°	32°	34°	36°	38°
4542	4364	3710	2838	2014	1393	972	700	523	401	311	243	191	153	125	102	85	71	61	53
100%	96%	82%	62%	44%	31%	21%	15%	12%	9%	7%	5%	4%	3%	3%	2%	2%	2%	1%	1%

Intensities in 270° c-plane

0°	2°	4°	6°	8°	10°	12°	14°	16°	18°	20°	22°	24°	26°	28°	30°	32°	34°	36°	38°
4542	4617	4589	4538	4454	4332	4167	3960	3722	3464	3197	2930	2672	2427	2190	1953	1705	1449	1193	950
100%	102%	101%	100%	98%	95%	92%	87%	82%	76%	70%	65%	59%	53%	48%	43%	38%	32%	26%	21%

Beam angle 50%	Field angle 10%	Cutoff angle 2,5%	Intensity ratio in 120° cone	Intensity ratio in 90° cone
25.6°	50.8°	78.2°	90.9%	85.7%