

**Light efficiency:**



**Light quality:**



**Color temperature:**

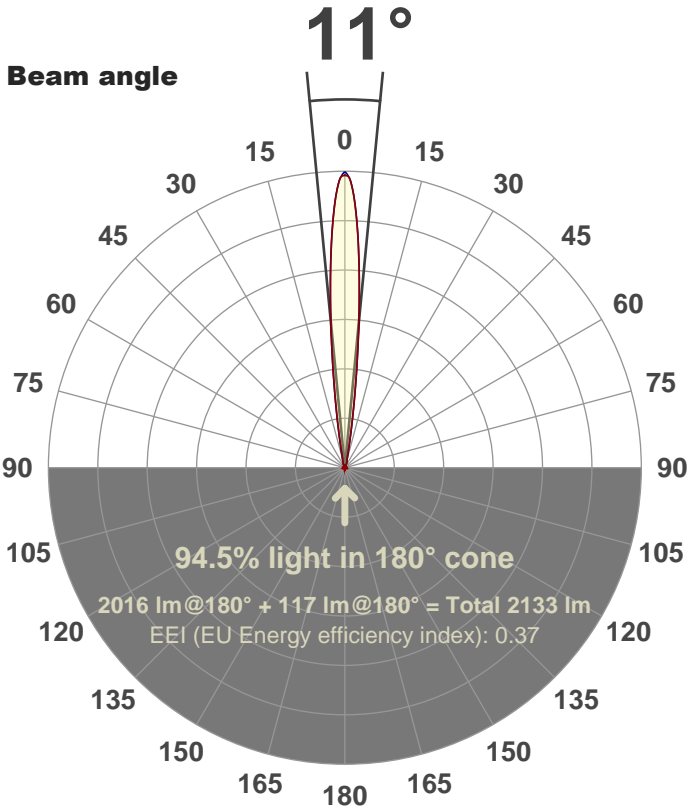


**Output: 2016 lm**

**Peak: 33749 cd**

**Power: 49.9 W**

**PF: 1.0**



**Product name:**

**FL50-CM-RGBW65K-IM-10-ELV-SM-GREEN**

**Date and time:**

**22-May-18 2:56:15 PM**

**Additional Information:**

**LED: RGBW**

**FIXTURE: FL50**

**FILM: 250251 (BEAM MIXING)**

**COLORAMP: ON**

**STABILIZED: YES**

**COLOR (RGBW): GREEN**

**PERFORMED BY: ABDULLAH QURESHI**

**Color**

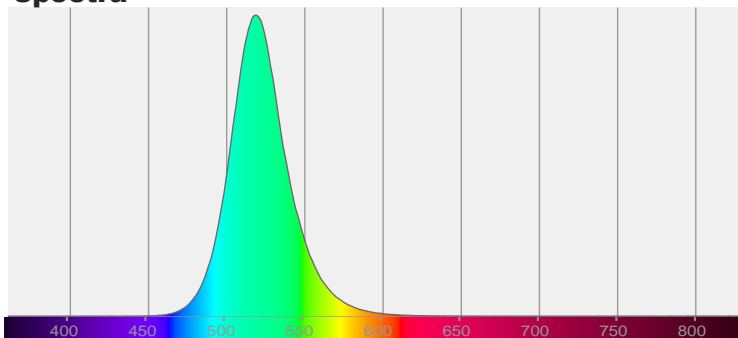


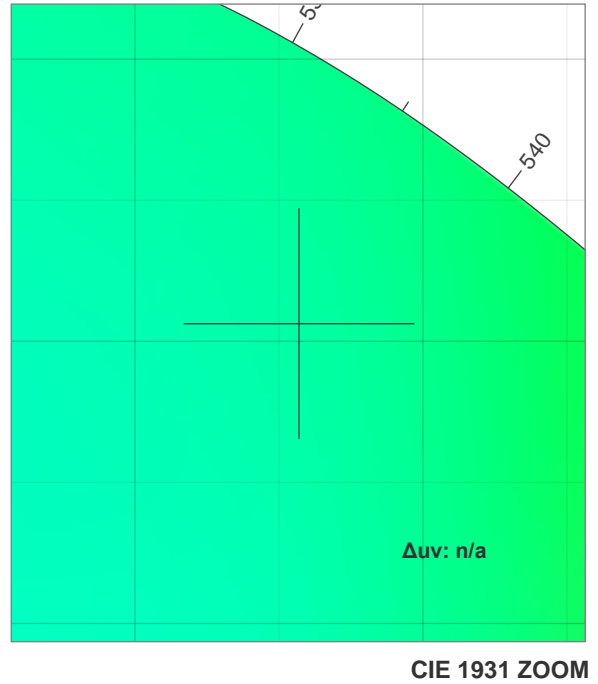
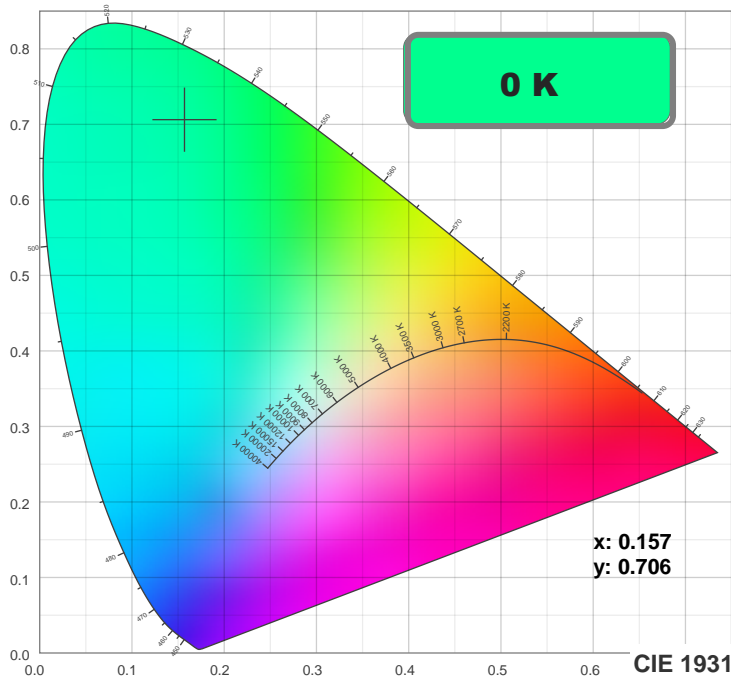
**CIE 1931**

**x: 0.157**

**y: 0.706**

**Spectra**





**TM30: 0.0**

**CRI: 0.0 (R1-R8)**



**CRI R values, only R1-R8 are used to calculate final CRI value**

R1	R2	R3	R4	R5	R6	R7	R8	R9	R10	R11	R12	R13	R14	R15
0.0	0.0	0.0	0.0	0.0	0.0	0.0	0.0	0.0	0.0	0.0	0.0	0.0	0.0	0.0

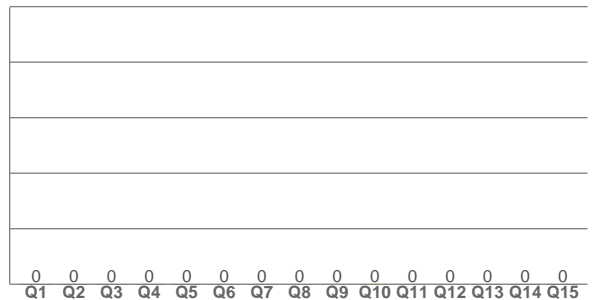
**TM30 C values, 16 binned values out of total of 99 C values**

C1	C2	C3	C4	C5	C6	C7	C8	C9	C10	C11	C12	C13	C14	C15	C16
0.0	0.0	0.0	0.0	0.0	0.0	0.0	0.0	0.0	0.0	0.0	0.0	0.0	0.0	0.0	0.0

**CQS Q values**

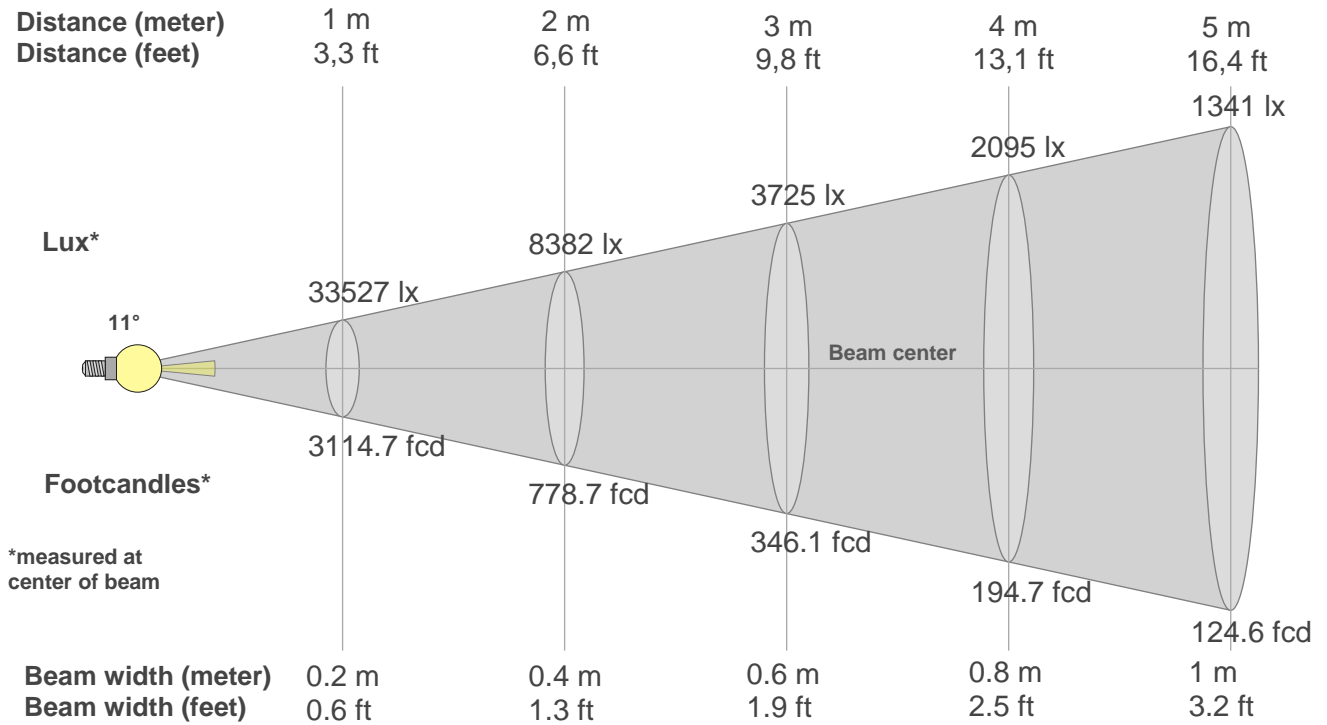
Q1	Q2	Q3	Q4	Q5	Q6	Q7	Q8	Q9	Q10	Q11	Q12	Q13	Q14	Q15
0.0	0.0	0.0	0.0	0.0	0.0	0.0	0.0	0.0	0.0	0.0	0.0	0.0	0.0	0.0

**CQS: 0.0**



## Color parameters

Color temperature	Color rendering index	Red component	Color fidelity	Color gamut	Color quality scale	Color coordinate cie 1931	Color coordinate cie 1931	Color coordinate	Color coordinate	Color deviation from black body
<b>CCT</b>	<b>CRI</b>	<b>CRI R9</b>	<b>TM30 Rf</b>	<b>TM30 Rg</b>	<b>CQS</b>	<b>x</b>	<b>y</b>	<b>u</b>	<b>v</b>	<b>Δuv</b>
<b>0 K</b>	<b>0.0</b>	<b>0.0</b>	<b>0.0</b>	<b>0.0</b>	<b>0.0</b>	<b>0.157</b>	<b>0.706</b>	<b>0.056</b>	<b>0.380</b>	<b>n/a</b>



### Beam intensities from 1-20m

1m	2m	3m	4m	5m	6m	7m	8m	9m	10m	11m	12m	13m	14m	15m	16m	17m	18m	19m	20m
3.3ft	6.6ft	9.8ft	13.1ft	16.4ft	19.7ft	23ft	26.2ft	29.5ft	32.8ft	36.1ft	39.4ft	42.7ft	45.9ft	49.2ft	52.5ft	55.8ft	59.1ft	62.3ft	65.6ft
33527lx	8382lx	3725lx	2095lx	1341lx	931lx	684lx	524lx	414lx	335lx	277lx	233lx	198lx	171lx	149lx	131lx	116lx	103lx	93lx	84lx
3114.7fcd	778.7fcd	346.1fcd	194.7fcd	124.6fcd	86.5fcd	63.6fcd	48.7fcd	38.5fcd	31.1fcd	25.7fcd	21.6fcd	18.4fcd	15.9fcd	13.8fcd	12.2fcd	10.8fcd	9.6fcd	8.6fcd	7.8fcd

### Intensities in 0° c-plane

0°	1°	2°	3°	4°	5°	6°	7°	8°	9°	10°	11°	12°	13°	14°	15°	16°	17°	18°	19°
33.5K	33.0K	30.7K	27.4K	23.3K	18.9K	14.7K	10.8K	7.7K	5.3K	3.6K	2.5K	1.8K	1.4K	1.1K	1.0K	0.9K	0.8K	0.8K	0.7K
100%	98%	92%	82%	69%	56%	44%	32%	23%	16%	11%	7%	5%	4%	3%	3%	3%	2%	2%	2%

### Intensities in 90° c-plane

0°	1°	2°	3°	4°	5°	6°	7°	8°	9°	10°	11°	12°	13°	14°	15°	16°	17°	18°	19°
33.5K	33.0K	30.8K	27.4K	23.2K	18.8K	14.6K	10.9K	7.8K	5.4K	3.7K	2.6K	1.9K	1.4K	1.2K	1.0K	0.9K	0.8K	0.8K	0.7K
100%	98%	92%	82%	69%	56%	44%	32%	23%	16%	11%	8%	6%	4%	4%	3%	3%	2%	2%	2%

### Intensities in 180° c-plane

0°	1°	2°	3°	4°	5°	6°	7°	8°	9°	10°	11°	12°	13°	14°	15°	16°	17°	18°	19°
33.5K	33.0K	30.7K	27.4K	23.3K	18.9K	14.7K	10.8K	7.7K	5.3K	3.6K	2.5K	1.8K	1.4K	1.1K	1.0K	0.9K	0.8K	0.8K	0.7K
100%	98%	92%	82%	69%	56%	44%	32%	23%	16%	11%	7%	5%	4%	3%	3%	3%	2%	2%	2%

### Intensities in 270° c-plane

0°	1°	2°	3°	4°	5°	6°	7°	8°	9°	10°	11°	12°	13°	14°	15°	16°	17°	18°	19°
33.5K	33.0K	30.8K	27.4K	23.2K	18.8K	14.6K	10.9K	7.8K	5.4K	3.7K	2.6K	1.9K	1.4K	1.2K	1.0K	0.9K	0.8K	0.8K	0.7K
100%	98%	92%	82%	69%	56%	44%	32%	23%	16%	11%	8%	6%	4%	4%	3%	3%	2%	2%	2%

Beam angle 50%	Field angle 10%	Cutoff angle 2,5%	Intensity ratio in 120° cone	Intensity ratio in 90° cone
11°	20.4°	33.7°	88.9%	85.9%