

Light efficiency:



Light quality:



Color temperature:

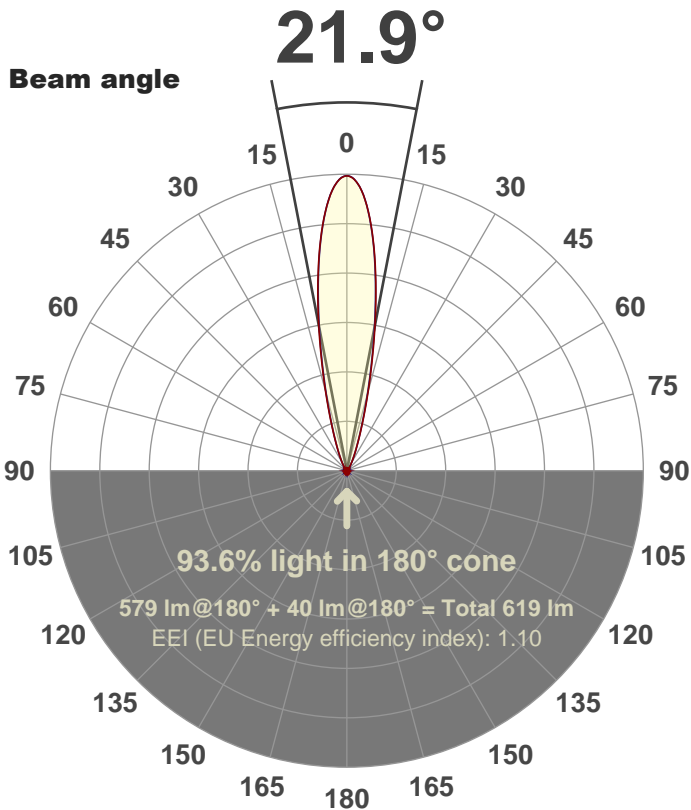


Output: 579 lm

Peak: 2654 cd

Power: 50.0 W

PF: 1.0



Product name:

FL50-CM-RGBW65K-IM-20-ELV-SM-BLUE

Date and time:

30-May-18 10:21:36 AM

Additional Information:

LED: RGBW

FIXTURE: FL50

FILM: 250255 (20°)

COLORAMP: ON

STABILIZED: YES

COLOR (RGBW): BLUE

PERFORMED BY: ABDULLAH QURESHI

Color

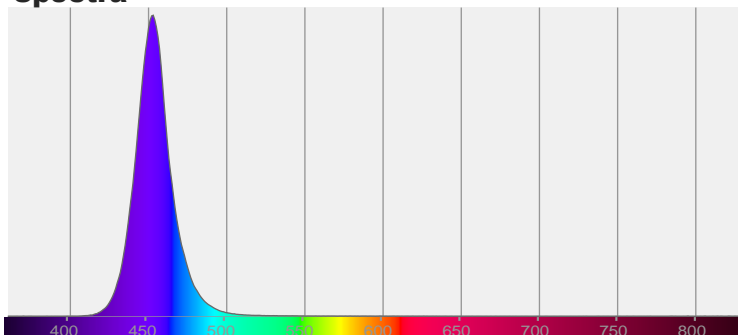


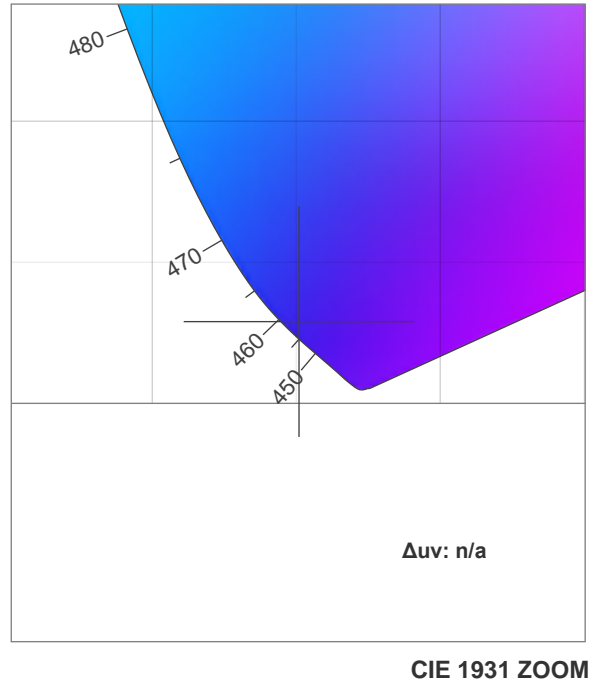
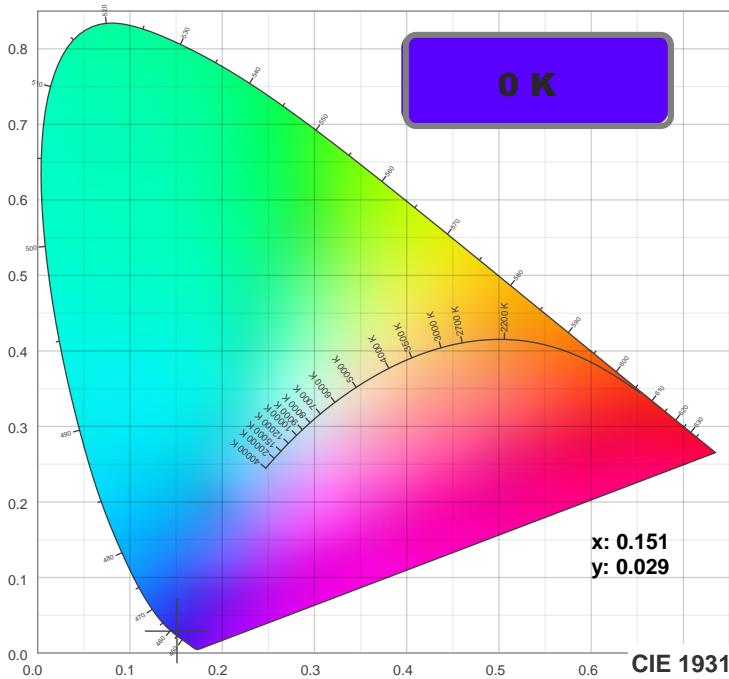
CIE 1931

x: 0.151

y: 0.029

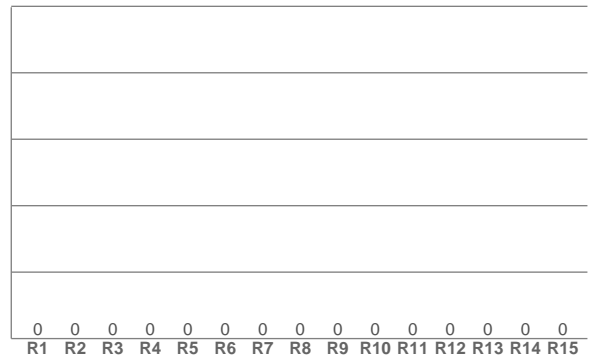
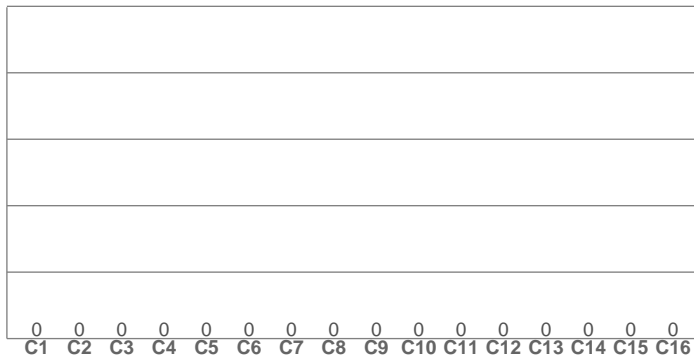
Spectra





TM30: 0.0

CRI: 0.0 (R1-R8)



CRI R values, only R1-R8 are used to calculate final CRI value

R1	R2	R3	R4	R5	R6	R7	R8	R9	R10	R11	R12	R13	R14	R15
0.0	0.0	0.0	0.0	0.0	0.0	0.0	0.0	0.0	0.0	0.0	0.0	0.0	0.0	0.0

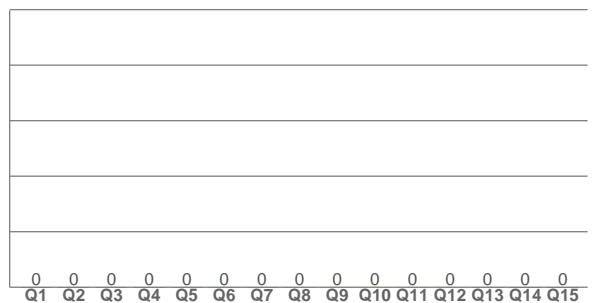
TM30 C values, 16 binned values out of total of 99 C values

C1	C2	C3	C4	C5	C6	C7	C8	C9	C10	C11	C12	C13	C14	C15	C16
0.0	0.0	0.0	0.0	0.0	0.0	0.0	0.0	0.0	0.0	0.0	0.0	0.0	0.0	0.0	0.0

CQS Q values

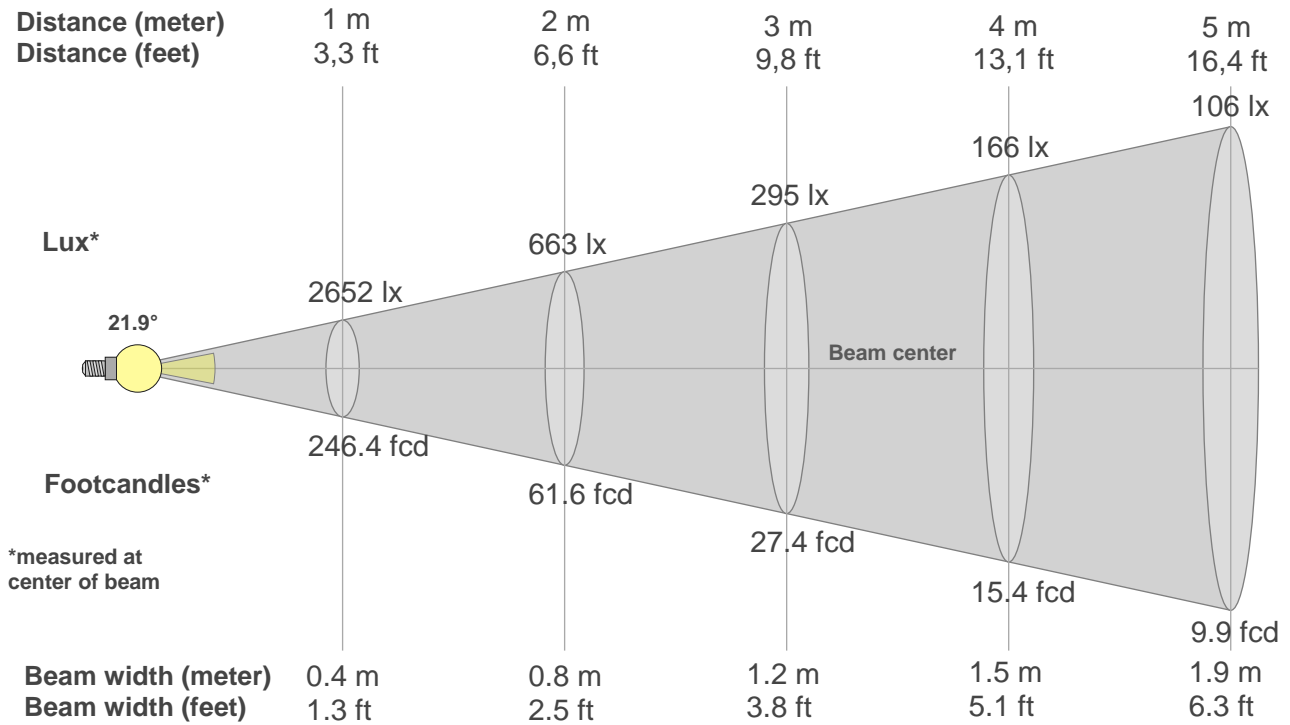
Q1	Q2	Q3	Q4	Q5	Q6	Q7	Q8	Q9	Q10	Q11	Q12	Q13	Q14	Q15
0.0	0.0	0.0	0.0	0.0	0.0	0.0	0.0	0.0	0.0	0.0	0.0	0.0	0.0	0.0

CQS: 0.0



Color parameters

Color temperature	Color rendering index	Red component	Color fidelity	Color gamut	Color quality scale	Color coordinate cie 1931	Color coordinate cie 1931	Color coordinate	Color coordinate	Color deviation from black body
CCT	CRI	CRI R9	TM30 Rf	TM30 Rg	CQS	x	y	u	v	Δuv
0 K	0.0	0.0	0.0	0.0	0.0	0.151	0.029	0.198	0.057	n/a



Beam intensities from 1-20m

1m	2m	3m	4m	5m	6m	7m	8m	9m	10m	11m	12m	13m	14m	15m	16m	17m	18m	19m	20m
3.3ft	6.6ft	9.8ft	13.1ft	16.4ft	19.7ft	23ft	26.2ft	29.5ft	32.8ft	36.1ft	39.4ft	42.7ft	45.9ft	49.2ft	52.5ft	55.8ft	59.1ft	62.3ft	65.6ft
2652lx	663lx	295lx	166lx	106lx	74lx	54lx	41lx	33lx	27lx	22lx	18lx	16lx	14lx	12lx	10lx	9lx	8lx	7lx	7lx
246.4fcd	61.6fcd	27.4fcd	15.4fcd	9.9fcd	6.8fcd	5fcd	3.8fcd	3fcd	2.5fcd	2fcd	1.7fcd	1.5fcd	1.3fcd	1.1fcd	1fcd	0.9fcd	0.8fcd	0.7fcd	0.6fcd

Intensities in 0° c-plane

0°	2°	4°	6°	8°	10°	12°	14°	16°	18°	20°	22°	24°	26°	28°	30°	32°	34°	36°	38°
2652	2596	2427	2167	1843	1496	1159	869	632	460	337	247	188	143	109	86	67	53	42	35
100%	98%	92%	82%	69%	56%	44%	33%	24%	17%	13%	9%	7%	5%	4%	3%	3%	2%	2%	1%

Intensities in 90° c-plane

0°	2°	4°	6°	8°	10°	12°	14°	16°	18°	20°	22°	24°	26°	28°	30°	32°	34°	36°	38°
2652	2595	2427	2159	1828	1469	1133	840	610	441	325	242	184	139	107	82	65	52	42	36
100%	98%	92%	81%	69%	55%	43%	32%	23%	17%	12%	9%	7%	5%	4%	3%	2%	2%	2%	1%

Intensities in 180° c-plane

0°	2°	4°	6°	8°	10°	12°	14°	16°	18°	20°	22°	24°	26°	28°	30°	32°	34°	36°	38°
2652	2596	2427	2167	1843	1496	1159	869	632	460	337	247	188	143	109	86	67	53	42	35
100%	98%	92%	82%	69%	56%	44%	33%	24%	17%	13%	9%	7%	5%	4%	3%	3%	2%	2%	1%

Intensities in 270° c-plane

0°	2°	4°	6°	8°	10°	12°	14°	16°	18°	20°	22°	24°	26°	28°	30°	32°	34°	36°	38°
2652	2595	2427	2159	1828	1469	1133	840	610	441	325	242	184	139	107	82	65	52	42	36
100%	98%	92%	81%	69%	55%	43%	32%	23%	17%	12%	9%	7%	5%	4%	3%	2%	2%	2%	1%

Beam angle 50%	Field angle 10%	Cutoff angle 2,5%	Intensity ratio in 120° cone	Intensity ratio in 90° cone
21.9°	43°	64°	87.7%	84.0%