

Light efficiency:

39 Lumen/Watt

Light quality:

CRI: 0.0

Color temperature:

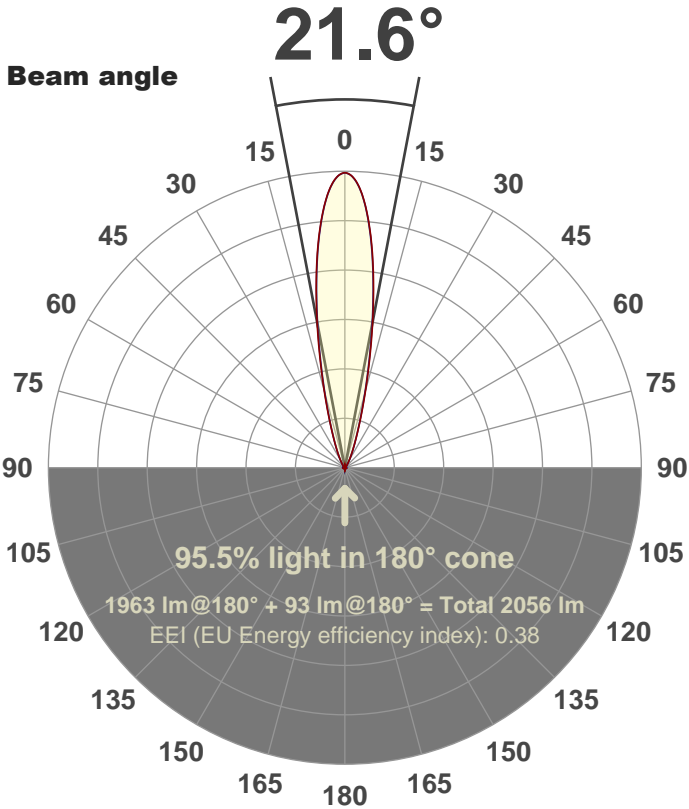
0 K

Output: 1963 lm

Peak: 9416 cd

Power: 50.0 W

PF: 1.0



Product name:

FL50-CM-RGBW65K-IM-20-ELV-SM-GREEN

Date and time:

30-May-18 10:08:13 AM

Additional Information:

LED: RGBW

FIXTURE: FL50

FILM: 250255 (20°)

COLORAMP: ON

STABILIZED: YES

COLOR (RGBW): GREEN

PERFORMED BY: ABDULLAH QURESHI

Color

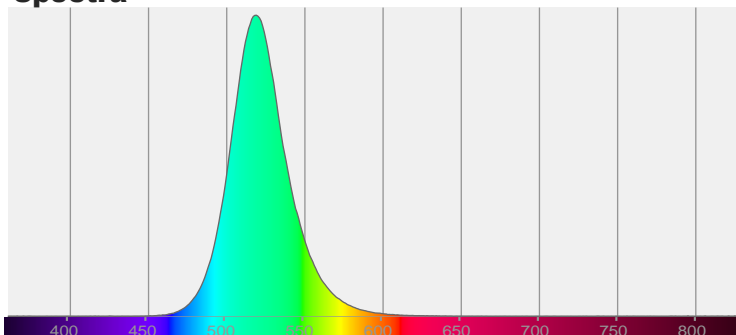


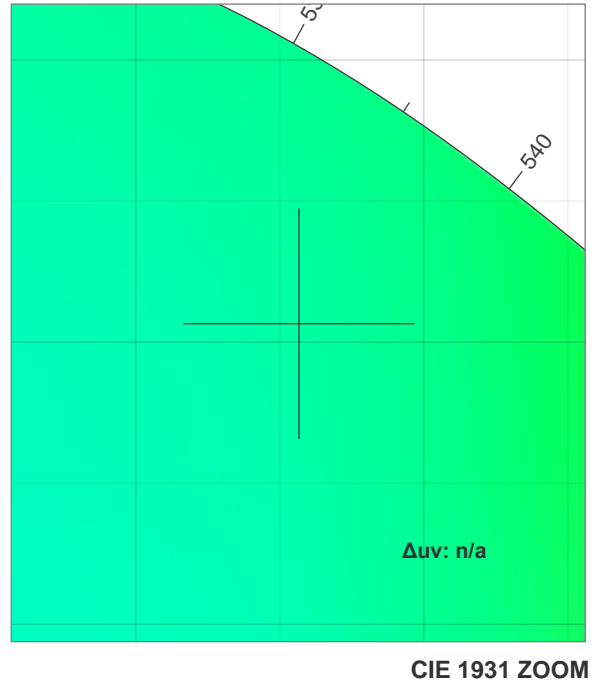
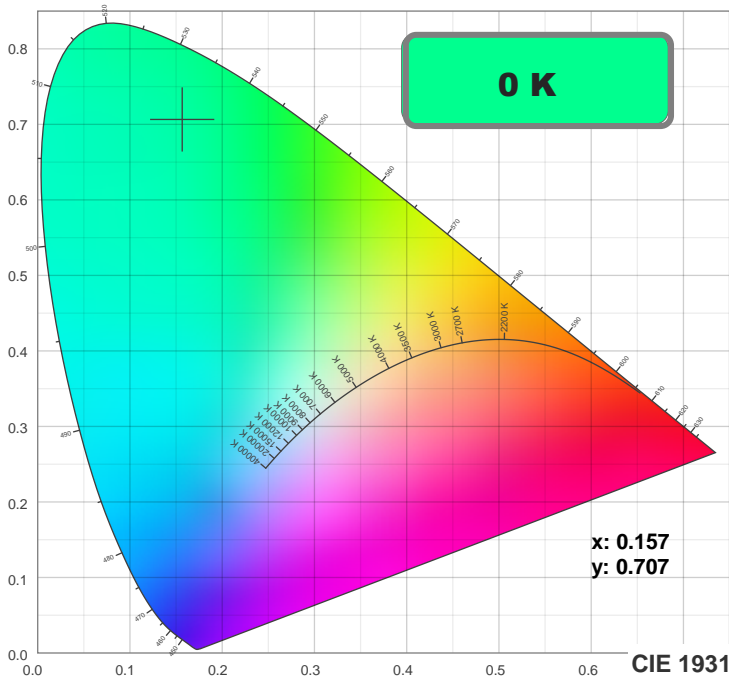
CIE 1931

x: 0.157

y: 0.707

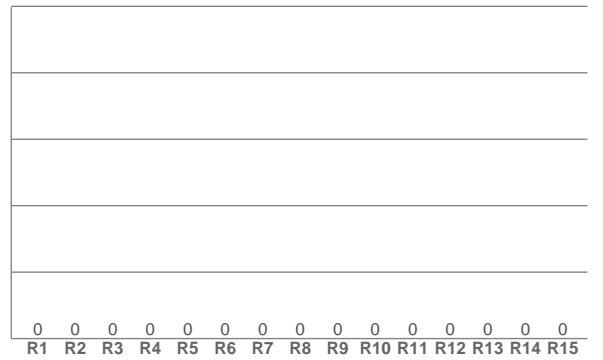
Spectra





TM30: 0.0

CRI: 0.0 (R1-R8)



CRI R values, only R1-R8 are used to calculate final CRI value

R1	R2	R3	R4	R5	R6	R7	R8	R9	R10	R11	R12	R13	R14	R15
0.0	0.0	0.0	0.0	0.0	0.0	0.0	0.0	0.0	0.0	0.0	0.0	0.0	0.0	0.0

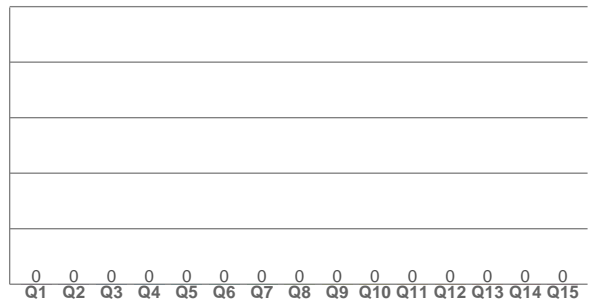
TM30 C values, 16 binned values out of total of 99 C values

C1	C2	C3	C4	C5	C6	C7	C8	C9	C10	C11	C12	C13	C14	C15	C16
0.0	0.0	0.0	0.0	0.0	0.0	0.0	0.0	0.0	0.0	0.0	0.0	0.0	0.0	0.0	0.0

CQS Q values

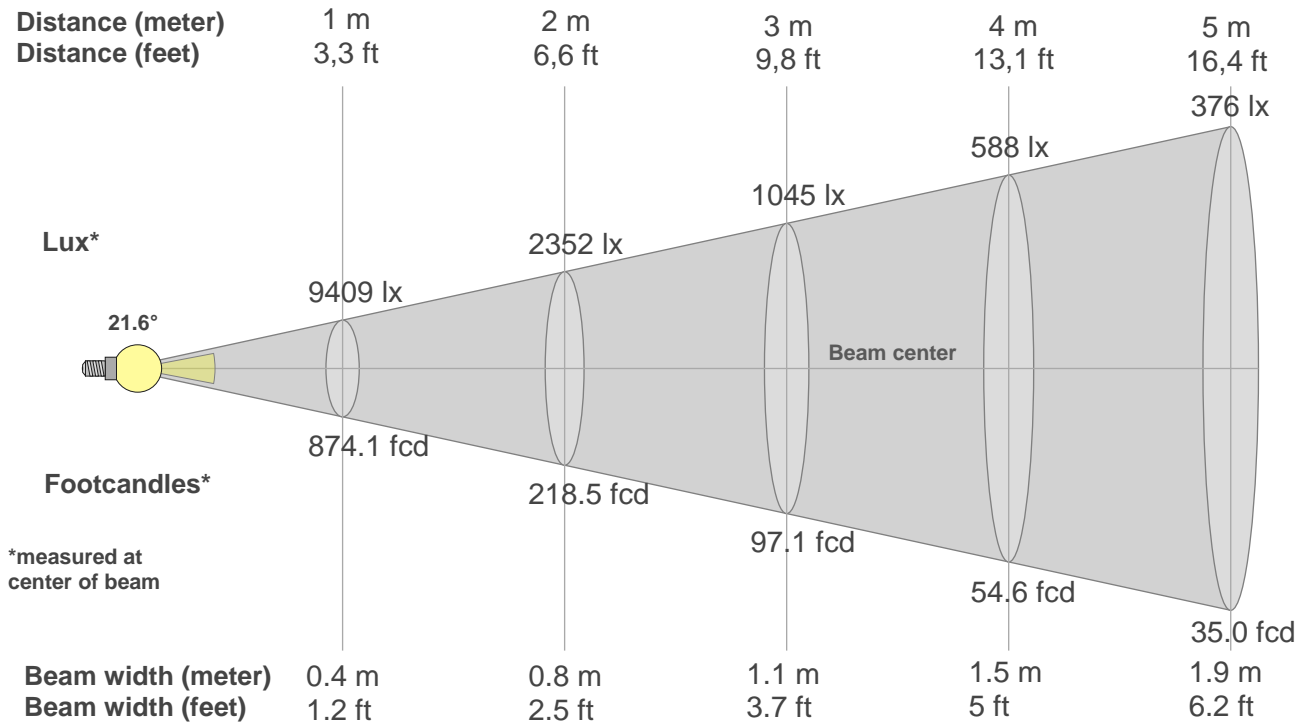
Q1	Q2	Q3	Q4	Q5	Q6	Q7	Q8	Q9	Q10	Q11	Q12	Q13	Q14	Q15
0.0	0.0	0.0	0.0	0.0	0.0	0.0	0.0	0.0	0.0	0.0	0.0	0.0	0.0	0.0

CQS: 0.0



Color parameters

Color temperature	Color rendering index	Red component	Color fidelity	Color gamut	Color quality scale	Color coordinate cie 1931	Color coordinate cie 1931	Color coordinate	Color coordinate	Color deviation from black body
CCT	CRI	CRI R9	TM30 Rf	TM30 Rg	CQS	x	y	u	v	Δuv
0 K	0.0	0.0	0.0	0.0	0.0	0.157	0.707	0.056	0.380	n/a



Beam intensities from 1-20m

1m	2m	3m	4m	5m	6m	7m	8m	9m	10m	11m	12m	13m	14m	15m	16m	17m	18m	19m	20m
3.3ft	6.6ft	9.8ft	13.1ft	16.4ft	19.7ft	23ft	26.2ft	29.5ft	32.8ft	36.1ft	39.4ft	42.7ft	45.9ft	49.2ft	52.5ft	55.8ft	59.1ft	62.3ft	65.6ft
9409lx	2352lx	1045lx	588lx	376lx	261lx	192lx	147lx	116lx	94lx	78lx	65lx	56lx	48lx	42lx	37lx	33lx	29lx	26lx	24lx
874.1fcd	218.5fcd	97.1fcd	54.6fcd	35fcd	24.3fcd	17.8fcd	13.7fcd	10.8fcd	8.7fcd	7.2fcd	6.1fcd	5.2fcd	4.5fcd	3.9fcd	3.4fcd	3fcd	2.7fcd	2.4fcd	2.2fcd

Intensities in 0° c-plane

0°	2°	4°	6°	8°	10°	12°	14°	16°	18°	20°	22°	24°	26°	28°	30°	32°	34°	36°	38°
9409	9206	8598	7651	6482	5225	4029	2992	2171	1567	1146	849	639	486	371	285	221	175	140	115
100%	98%	91%	81%	69%	56%	43%	32%	23%	17%	12%	9%	7%	5%	4%	3%	2%	2%	1%	1%

Intensities in 90° c-plane

0°	2°	4°	6°	8°	10°	12°	14°	16°	18°	20°	22°	24°	26°	28°	30°	32°	34°	36°	38°
9409	9200	8583	7613	6423	5142	3931	2895	2094	1515	1110	828	625	475	362	277	215	170	137	113
100%	98%	91%	81%	68%	55%	42%	31%	22%	16%	12%	9%	7%	5%	4%	3%	2%	2%	1%	1%

Intensities in 180° c-plane

0°	2°	4°	6°	8°	10°	12°	14°	16°	18°	20°	22°	24°	26°	28°	30°	32°	34°	36°	38°
9409	9206	8598	7651	6482	5225	4029	2992	2171	1567	1146	849	639	486	371	285	221	175	140	115
100%	98%	91%	81%	69%	56%	43%	32%	23%	17%	12%	9%	7%	5%	4%	3%	2%	2%	1%	1%

Intensities in 270° c-plane

0°	2°	4°	6°	8°	10°	12°	14°	16°	18°	20°	22°	24°	26°	28°	30°	32°	34°	36°	38°
9409	9200	8583	7613	6423	5142	3931	2895	2094	1515	1110	828	625	475	362	277	215	170	137	113
100%	98%	91%	81%	68%	55%	42%	31%	22%	16%	12%	9%	7%	5%	4%	3%	2%	2%	1%	1%

Beam angle 50%	Field angle 10%	Cutoff angle 2,5%	Intensity ratio in 120° cone	Intensity ratio in 90° cone
21.6°	42.5°	62.9°	90.6%	87.3%