

Light efficiency:

21 Lumen/Watt

Light quality:

CRI: 0.0

Color temperature:

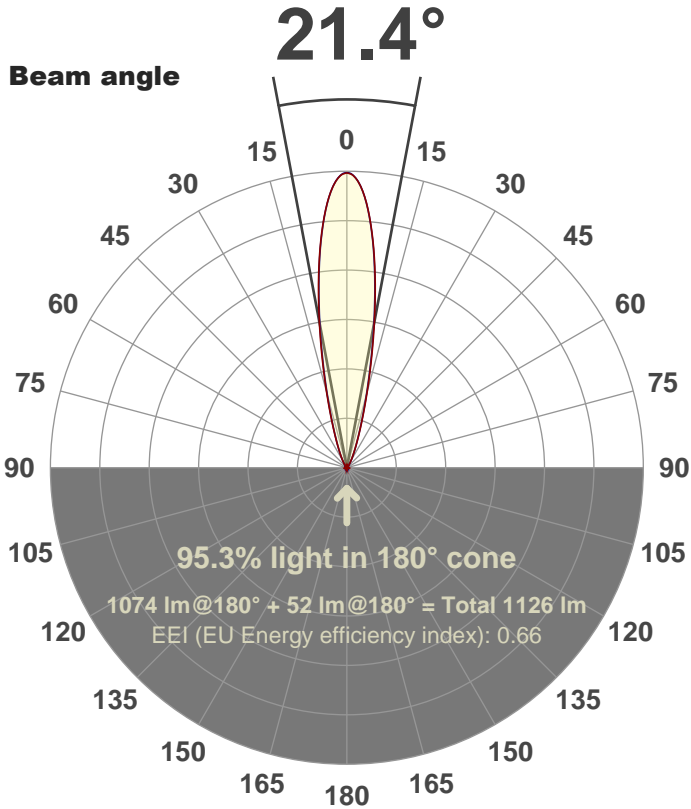
0 K

Output: 1074 lm

Peak: 5279 cd

Power: 50.2 W

PF: 1.0



Product name:

FL50-CM-RGBW65K-IM-20-ELV-SM-RED

Date and time:

30-May-18 9:51:28 AM

Additional Information:

LED: RGBW

FIXTURE: FL50

FILM: 250255 (20°)

COLORAMP: ON

STABILIZED: YES

COLOR (RGBW): RED

PERFORMED BY: ABDULLAH QURESHI

Color

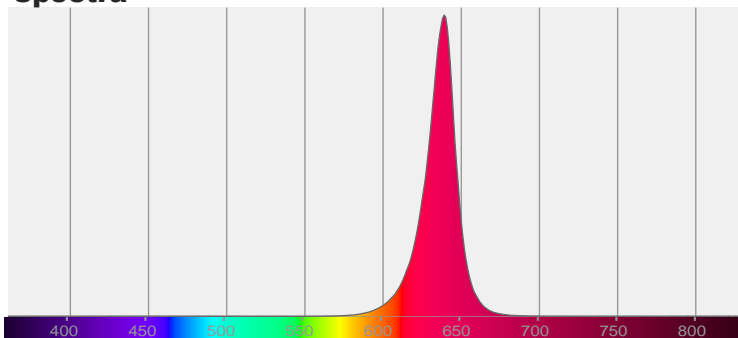


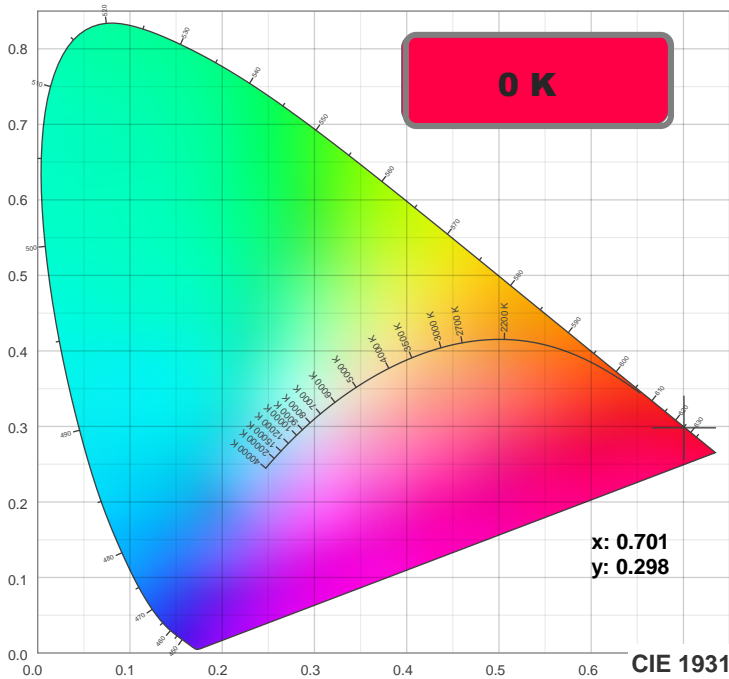
CIE 1931

x: 0.701

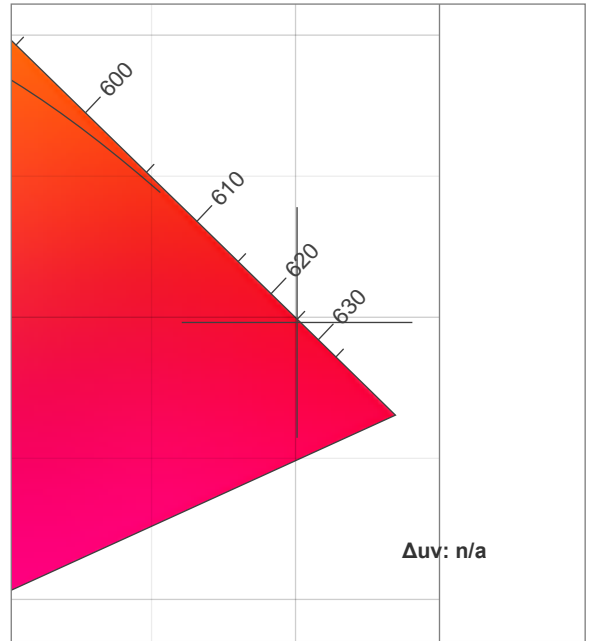
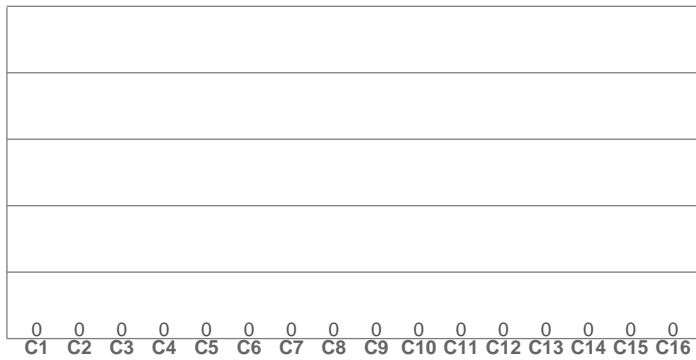
y: 0.298

Spectra





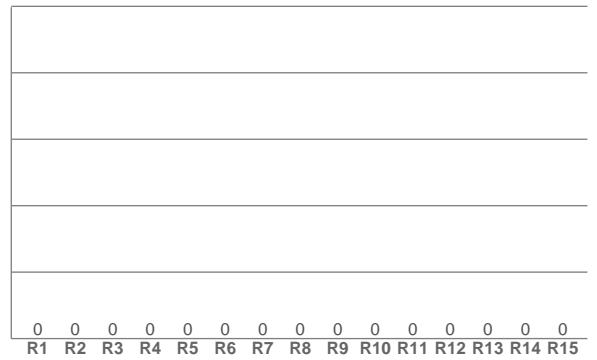
TM30: 0.0



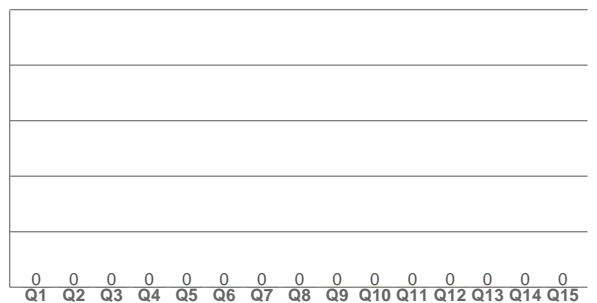
Δuv: n/a

CIE 1931 ZOOM

CRI: 0.0 (R1-R8)



CQS: 0.0



CRI R values, only R1-R8 are used to calculate final CRI value

R1	R2	R3	R4	R5	R6	R7	R8	R9	R10	R11	R12	R13	R14	R15
0.0	0.0	0.0	0.0	0.0	0.0	0.0	0.0	0.0	0.0	0.0	0.0	0.0	0.0	0.0

TM30 C values, 16 binned values out of total of 99 C values

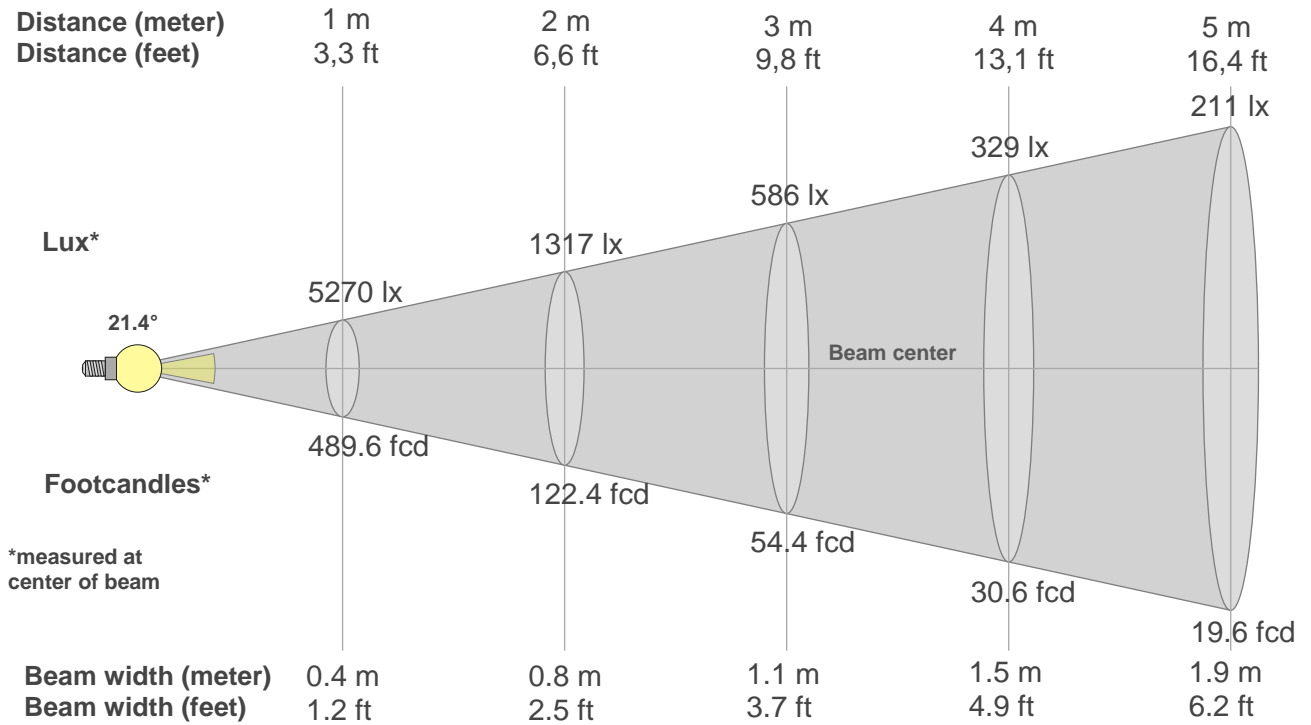
C1	C2	C3	C4	C5	C6	C7	C8	C9	C10	C11	C12	C13	C14	C15	C16
0.0	0.0	0.0	0.0	0.0	0.0	0.0	0.0	0.0	0.0	0.0	0.0	0.0	0.0	0.0	0.0

CQS Q values

Q1	Q2	Q3	Q4	Q5	Q6	Q7	Q8	Q9	Q10	Q11	Q12	Q13	Q14	Q15
0.0	0.0	0.0	0.0	0.0	0.0	0.0	0.0	0.0	0.0	0.0	0.0	0.0	0.0	0.0

Color parameters

Color temperature	Color rendering index	Red component	Color fidelity	Color gamut	Color quality scale	Color coordinate cie 1931	Color coordinate cie 1931	Color coordinate	Color coordinate	Color deviation from black body
CCT	CRI	CRI R9	TM30 Rf	TM30 Rg	CQS	x	y	u	v	Δuv
0 K	0.0	0.0	0.0	0.0	0.0	0.701	0.298	0.541	0.346	n/a



Beam intensities from 1-20m

1m	2m	3m	4m	5m	6m	7m	8m	9m	10m	11m	12m	13m	14m	15m	16m	17m	18m	19m	20m
3.3ft	6.6ft	9.8ft	13.1ft	16.4ft	19.7ft	23ft	26.2ft	29.5ft	32.8ft	36.1ft	39.4ft	42.7ft	45.9ft	49.2ft	52.5ft	55.8ft	59.1ft	62.3ft	65.6ft
5270lx	1317lx	586lx	329lx	211lx	146lx	108lx	82lx	65lx	53lx	44lx	37lx	31lx	27lx	23lx	21lx	18lx	16lx	15lx	13lx
489.6fcd	122.4fcd	54.4fcd	30.6fcd	19.6fcd	13.6fcd	10fcd	7.6fcd	6fcd	4.9fcd	4fcd	3.4fcd	2.9fcd	2.5fcd	2.2fcd	1.9fcd	1.7fcd	1.5fcd	1.4fcd	1.2fcd

Intensities in 0° c-plane

0°	2°	4°	6°	8°	10°	12°	14°	16°	18°	20°	22°	24°	26°	28°	30°	32°	34°	36°	38°
5270	5157	4804	4259	3599	2890	2221	1645	1193	859	624	459	344	259	197	150	116	90	73	60
100%	98%	91%	81%	68%	55%	42%	31%	23%	16%	12%	9%	7%	5%	4%	3%	2%	2%	1%	1%

Intensities in 90° c-plane

0°	2°	4°	6°	8°	10°	12°	14°	16°	18°	20°	22°	24°	26°	28°	30°	32°	34°	36°	38°
5270	5154	4798	4244	3566	2843	2165	1589	1144	825	602	446	335	252	191	146	113	89	72	59
100%	98%	91%	81%	68%	54%	41%	30%	22%	16%	11%	8%	6%	5%	4%	3%	2%	2%	1%	1%

Intensities in 180° c-plane

0°	2°	4°	6°	8°	10°	12°	14°	16°	18°	20°	22°	24°	26°	28°	30°	32°	34°	36°	38°
5270	5157	4804	4259	3599	2890	2221	1645	1193	859	624	459	344	259	197	150	116	90	73	60
100%	98%	91%	81%	68%	55%	42%	31%	23%	16%	12%	9%	7%	5%	4%	3%	2%	2%	1%	1%

Intensities in 270° c-plane

0°	2°	4°	6°	8°	10°	12°	14°	16°	18°	20°	22°	24°	26°	28°	30°	32°	34°	36°	38°
5270	5154	4798	4244	3566	2843	2165	1589	1144	825	602	446	335	252	191	146	113	89	72	59
100%	98%	91%	81%	68%	54%	41%	30%	22%	16%	11%	8%	6%	5%	4%	3%	2%	2%	1%	1%

Beam angle 50%	Field angle 10%	Cutoff angle 2,5%	Intensity ratio in 120° cone	Intensity ratio in 90° cone
21.4°	42.1°	61.9°	90.6%	87.4%