

Light efficiency:

38 Lumen/Watt

Light quality:

CRI: 0.0

Color temperature:

0 K

Output: 1919 lm

Peak: 2929 cd

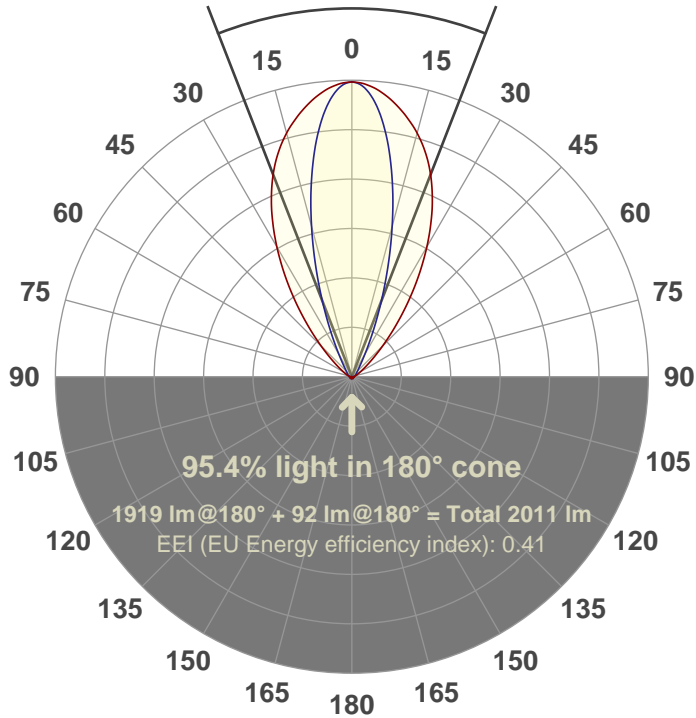
Power: 50.0 W

PF: 1.0



42.6°

Beam angle



Color



CIE 1931
x: 0.157
y: 0.706

Product name:

FL50-CM-RGBW65K-IM-30X60-ELV-SM-GREEN

Date and time:

01-Jun-18 3:44:53 PM

Additional Information:

LED: RGBW

FIXTURE: FL50

FILM: 250262 (30°X60°)

COLORAMP: ON

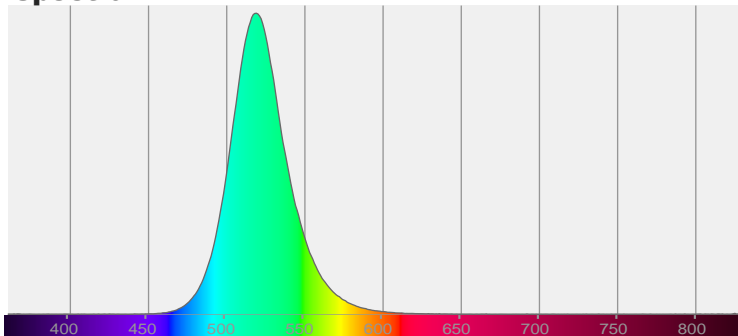
STABILIZED: YES

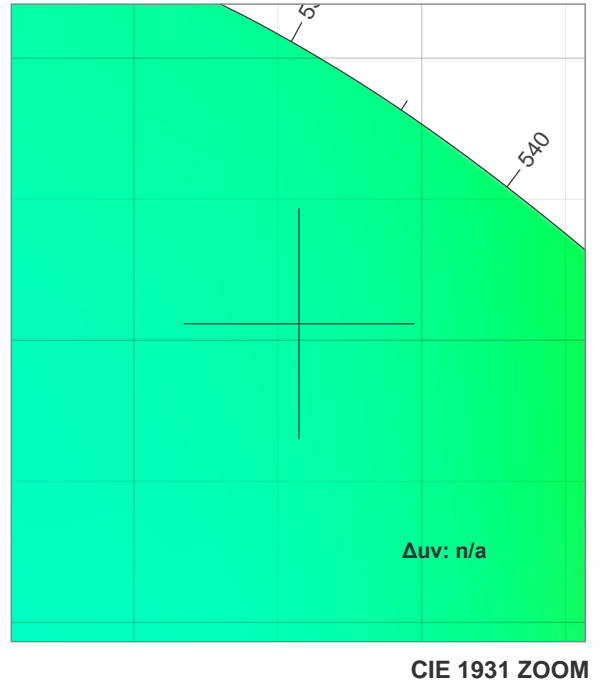
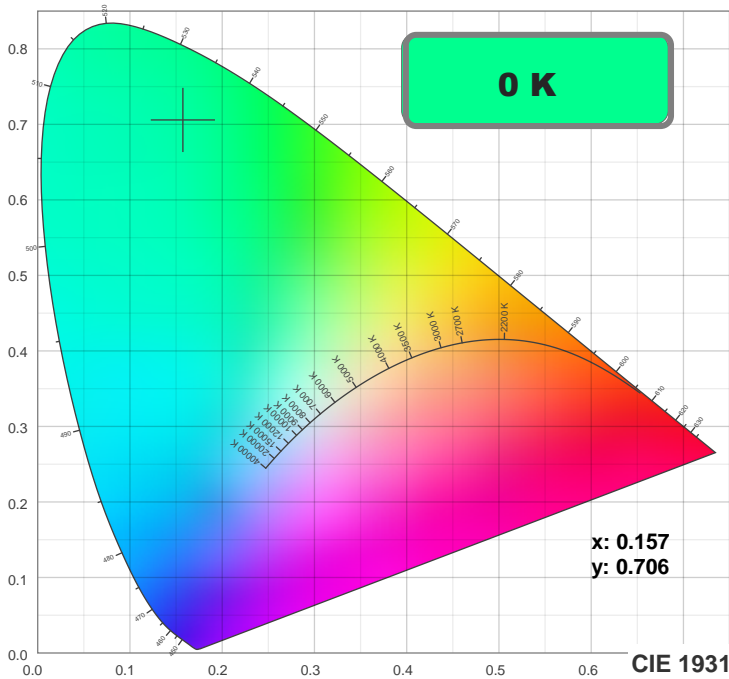
COLOR (RGBW): GREEN

FWHM: 31.3°X60.6°

PERFORMED BY: ABDULLAH QURESHI

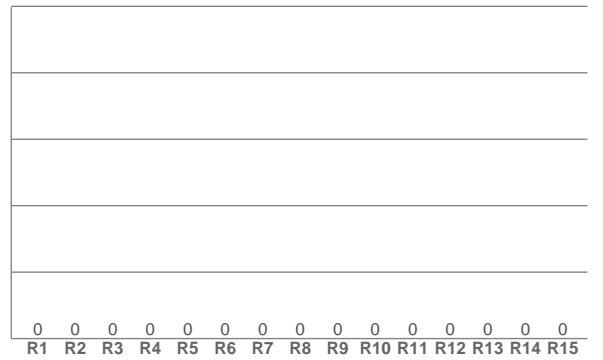
Spectra





TM30: 0.0

CRI: 0.0 (R1-R8)



CRI R values, only R1-R8 are used to calculate final CRI value

R1	R2	R3	R4	R5	R6	R7	R8	R9	R10	R11	R12	R13	R14	R15
0.0	0.0	0.0	0.0	0.0	0.0	0.0	0.0	0.0	0.0	0.0	0.0	0.0	0.0	0.0

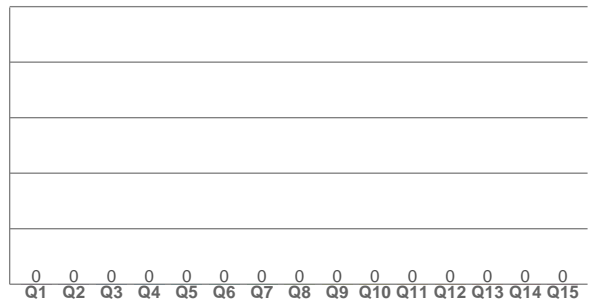
TM30 C values, 16 binned values out of total of 99 C values

C1	C2	C3	C4	C5	C6	C7	C8	C9	C10	C11	C12	C13	C14	C15	C16
0.0	0.0	0.0	0.0	0.0	0.0	0.0	0.0	0.0	0.0	0.0	0.0	0.0	0.0	0.0	0.0

CQS Q values

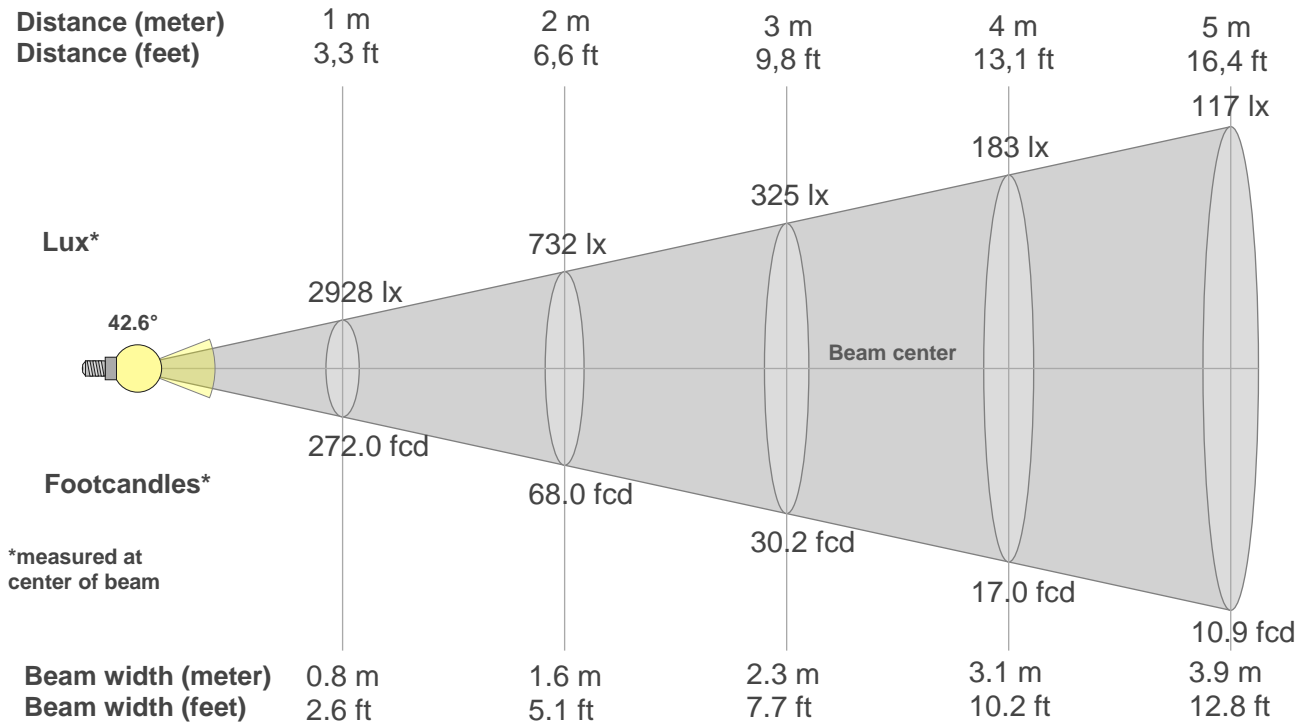
Q1	Q2	Q3	Q4	Q5	Q6	Q7	Q8	Q9	Q10	Q11	Q12	Q13	Q14	Q15
0.0	0.0	0.0	0.0	0.0	0.0	0.0	0.0	0.0	0.0	0.0	0.0	0.0	0.0	0.0

CQS: 0.0



Color parameters

Color temperature	Color rendering index	Red component	Color fidelity	Color gamut	Color quality scale	Color coordinate cie 1931	Color coordinate cie 1931	Color coordinate	Color coordinate	Color deviation from black body
CCT	CRI	CRI R9	TM30 Rf	TM30 Rg	CQS	x	y	u	v	Δuv
0 K	0.0	0.0	0.0	0.0	0.0	0.157	0.706	0.056	0.380	n/a



Beam intensities from 1-20m

1m	2m	3m	4m	5m	6m	7m	8m	9m	10m	11m	12m	13m	14m	15m	16m	17m	18m	19m	20m
3.3ft	6.6ft	9.8ft	13.1ft	16.4ft	19.7ft	23ft	26.2ft	29.5ft	32.8ft	36.1ft	39.4ft	42.7ft	45.9ft	49.2ft	52.5ft	55.8ft	59.1ft	62.3ft	65.6ft
2928lx	732lx	325lx	183lx	117lx	81lx	60lx	46lx	36lx	29lx	24lx	20lx	17lx	15lx	13lx	11lx	10lx	9lx	8lx	7lx
272fcd	68fcd	30.2fcd	17fcd	10.9fcd	7.6fcd	5.6fcd	4.2fcd	3.4fcd	2.7fcd	2.2fcd	1.9fcd	1.6fcd	1.4fcd	1.2fcd	1.1fcd	0.9fcd	0.8fcd	0.8fcd	0.7fcd

Intensities in 0° c-plane

0°	2°	4°	6°	8°	10°	12°	14°	16°	18°	20°	22°	24°	26°	28°	30°	32°	34°	36°	38°
2928	2918	2887	2840	2781	2711	2634	2552	2458	2353	2237	2107	1965	1814	1655	1491	1324	1161	1001	851
100%	100%	99%	97%	95%	93%	90%	87%	84%	80%	76%	72%	67%	62%	57%	51%	45%	40%	34%	29%

Intensities in 90° c-plane

0°	2°	4°	6°	8°	10°	12°	14°	16°	18°	20°	22°	24°	26°	28°	30°	32°	34°	36°	38°
2928	2893	2793	2635	2433	2197	1943	1679	1418	1169	940	740	572	437	335	260	206	168	140	120
100%	99%	95%	90%	83%	75%	66%	57%	48%	40%	32%	25%	20%	15%	11%	9%	7%	6%	5%	4%

Intensities in 180° c-plane

0°	2°	4°	6°	8°	10°	12°	14°	16°	18°	20°	22°	24°	26°	28°	30°	32°	34°	36°	38°
2928	2918	2887	2840	2781	2711	2634	2552	2458	2353	2237	2107	1965	1814	1655	1491	1324	1161	1001	851
100%	100%	99%	97%	95%	93%	90%	87%	84%	80%	76%	72%	67%	62%	57%	51%	45%	40%	34%	29%

Intensities in 270° c-plane

0°	2°	4°	6°	8°	10°	12°	14°	16°	18°	20°	22°	24°	26°	28°	30°	32°	34°	36°	38°
2928	2893	2793	2635	2433	2197	1943	1679	1418	1169	940	740	572	437	335	260	206	168	140	120
100%	99%	95%	90%	83%	75%	66%	57%	48%	40%	32%	25%	20%	15%	11%	9%	7%	6%	5%	4%

Beam angle 50%	Field angle 10%	Cutoff angle 2,5%	Intensity ratio in 120° cone	Intensity ratio in 90° cone
42.6°	74.7°	109°	90.1%	83.3%