

**Light efficiency:**



**Light quality:**



**Color temperature:**



**Output: 3226 lm**

**Peak: 4954 cd**

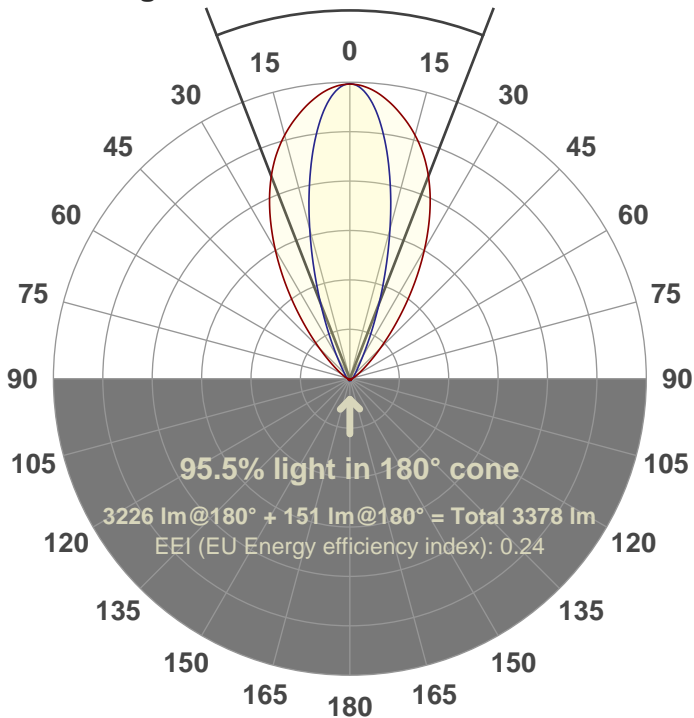
**Power: 50.0 W**

**PF: 1.0**

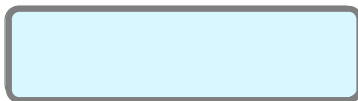


**42.4°**

**Beam angle**



**Color**



**CIE 1931**  
**x: 0.314**  
**y: 0.323**

**Product name:**

**FL50-CM-RGBW65K-IM-30X60-ELV-SM-WHITE**

**Date and time:**

**01-Jun-18 4:10:06 PM**

**Additional Information:**

**LED: RGBW**

**FIXTURE: FL50**

**FILM: 250262 (30°X60°)**

**COLORAMP: ON**

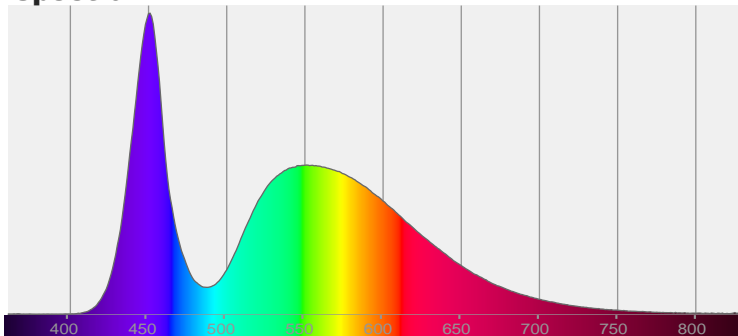
**STABILIZED: YES**

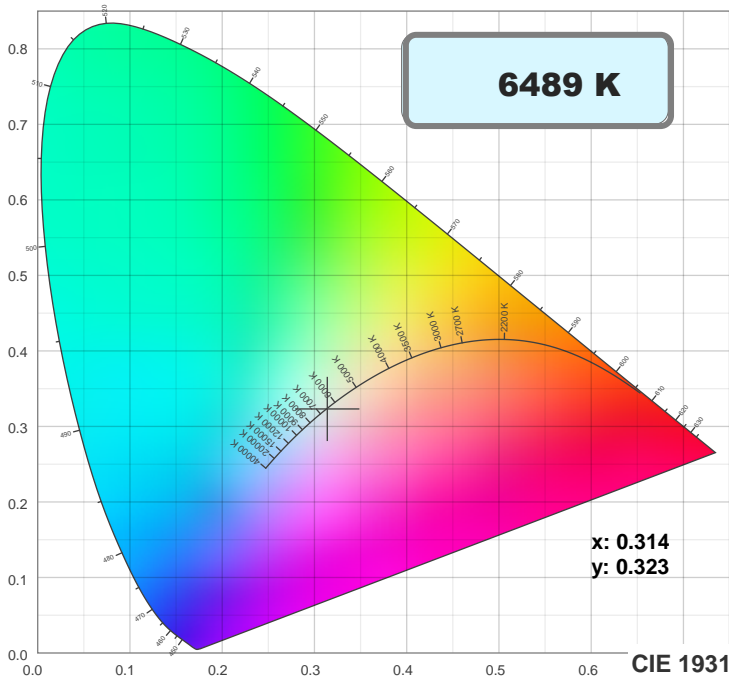
**COLOR (RGBW): WHITE**

**FWHM: 31.2°X60.5°**

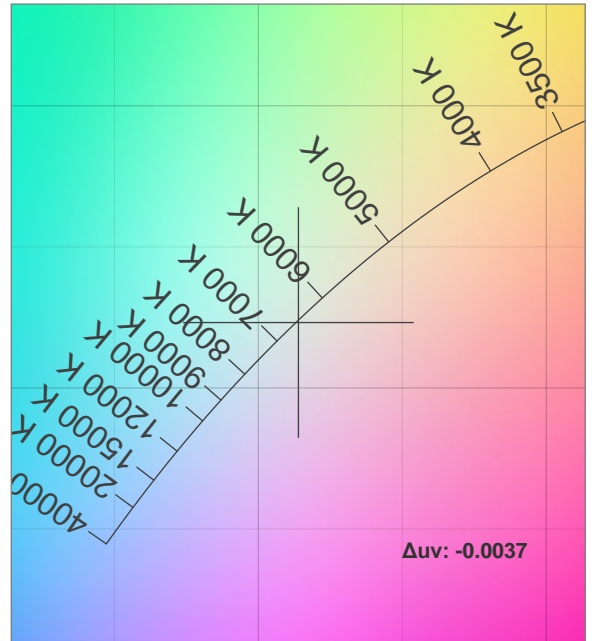
**PERFORMED BY: ABDULLAH QURESHI**

**Spectra**

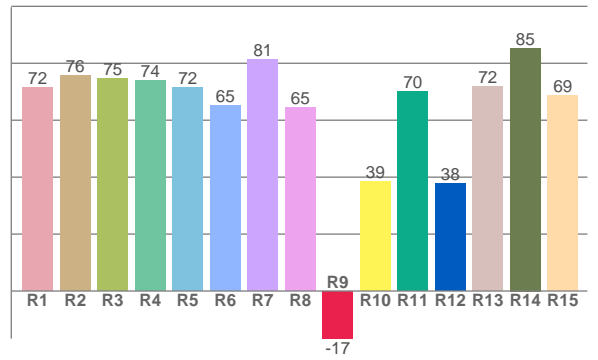
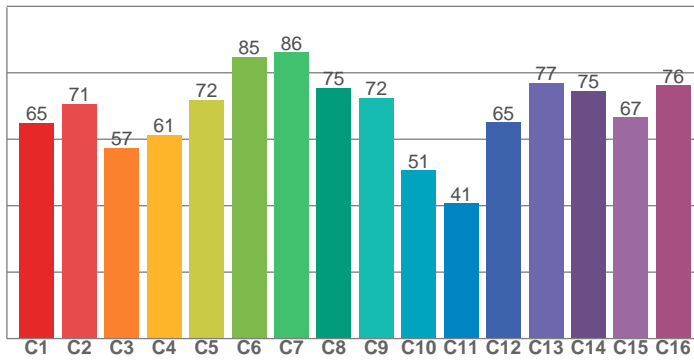




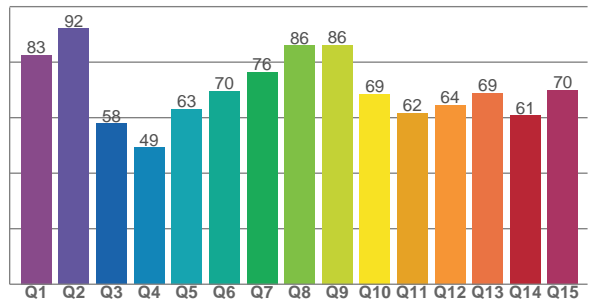
**TM30: 67.9**



**CRI: 72.3 (R1-R8)**



**CQS: 68.3**



**CRI R values, only R1-R8 are used to calculate final CRI value**

R1	R2	R3	R4	R5	R6	R7	R8	R9	R10	R11	R12	R13	R14	R15
71.6	75.7	74.5	74.1	71.6	65.0	81.5	64.5	-16.7	38.5	70.1	37.8	71.8	85.4	68.6

**TM30 C values, 16 binned values out of total of 99 C values**

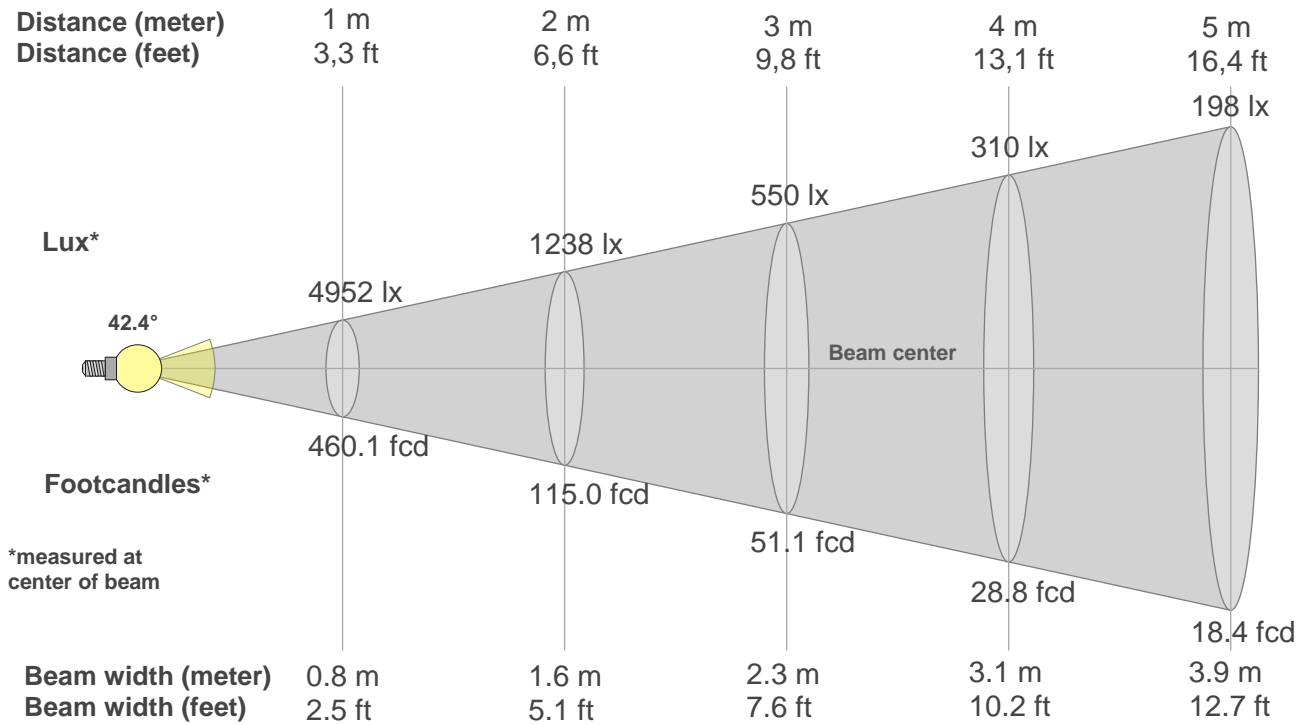
C1	C2	C3	C4	C5	C6	C7	C8	C9	C10	C11	C12	C13	C14	C15	C16
65.0	70.7	57.5	61.4	71.8	84.8	86.1	75.4	72.5	50.7	40.7	65.1	77.0	74.5	66.5	76.3

**CQS Q values**

Q1	Q2	Q3	Q4	Q5	Q6	Q7	Q8	Q9	Q10	Q11	Q12	Q13	Q14	Q15
82.6	92.0	57.9	49.2	63.1	69.6	76.4	86.0	86.1	68.5	61.7	64.5	69.0	60.7	69.8

## Color parameters

Color temperature	Color rendering index	Red component	Color fidelity	Color gamut	Color quality scale	Color coordinate cie 1931	Color coordinate cie 1931	Color coordinate	Color coordinate	Color deviation from black body
CCT	CRI	CRI R9	TM30 Rf	TM30 Rg	CQS	x	y	u	v	$\Delta uv$
6489 K	72.3	-16.7	67.9	93.8	68.3	0.314	0.323	0.201	0.310	-0.0037



### Beam intensities from 1-20m

1m	2m	3m	4m	5m	6m	7m	8m	9m	10m	11m	12m	13m	14m	15m	16m	17m	18m	19m	20m
3.3ft	6.6ft	9.8ft	13.1ft	16.4ft	19.7ft	23ft	26.2ft	29.5ft	32.8ft	36.1ft	39.4ft	42.7ft	45.9ft	49.2ft	52.5ft	55.8ft	59.1ft	62.3ft	65.6ft
4952lx	1238lx	550lx	310lx	198lx	138lx	101lx	77lx	61lx	50lx	41lx	34lx	29lx	25lx	22lx	19lx	17lx	15lx	14lx	12lx
460.1fcd	115fcd	51.1fcd	28.8fcd	18.4fcd	12.8fcd	9.4fcd	7.2fcd	5.7fcd	4.6fcd	3.8fcd	3.2fcd	2.7fcd	2.3fcd	2fcd	1.8fcd	1.6fcd	1.4fcd	1.3fcd	1.2fcd

### Intensities in 0° c-plane

0°	2°	4°	6°	8°	10°	12°	14°	16°	18°	20°	22°	24°	26°	28°	30°	32°	34°	36°	38°
4952	4936	4886	4808	4705	4587	4457	4315	4157	3980	3781	3560	3320	3060	2788	2509	2227	1949	1679	1424
100%	100%	99%	97%	95%	93%	90%	87%	84%	80%	76%	72%	67%	62%	56%	51%	45%	39%	34%	29%

### Intensities in 90° c-plane

0°	2°	4°	6°	8°	10°	12°	14°	16°	18°	20°	22°	24°	26°	28°	30°	32°	34°	36°	38°
4952	4896	4726	4460	4112	3713	3278	2831	2385	1960	1573	1236	954	730	559	433	343	281	235	201
100%	99%	95%	90%	83%	75%	66%	57%	48%	40%	32%	25%	19%	15%	11%	9%	7%	6%	5%	4%

### Intensities in 180° c-plane

0°	2°	4°	6°	8°	10°	12°	14°	16°	18°	20°	22°	24°	26°	28°	30°	32°	34°	36°	38°
4952	4936	4886	4808	4705	4587	4457	4315	4157	3980	3781	3560	3320	3060	2788	2509	2227	1949	1679	1424
100%	100%	99%	97%	95%	93%	90%	87%	84%	80%	76%	72%	67%	62%	56%	51%	45%	39%	34%	29%

### Intensities in 270° c-plane

0°	2°	4°	6°	8°	10°	12°	14°	16°	18°	20°	22°	24°	26°	28°	30°	32°	34°	36°	38°
4952	4896	4726	4460	4112	3713	3278	2831	2385	1960	1573	1236	954	730	559	433	343	281	235	201
100%	99%	95%	90%	83%	75%	66%	57%	48%	40%	32%	25%	19%	15%	11%	9%	7%	6%	5%	4%

Beam angle 50%	Field angle 10%	Cutoff angle 2,5%	Intensity ratio in 120° cone	Intensity ratio in 90° cone
42.4°	74.5°	108.6°	90.3%	83.5%