

Light efficiency:



Light quality:



Color temperature:



Output: 3225 lm

Peak: 4342 cd

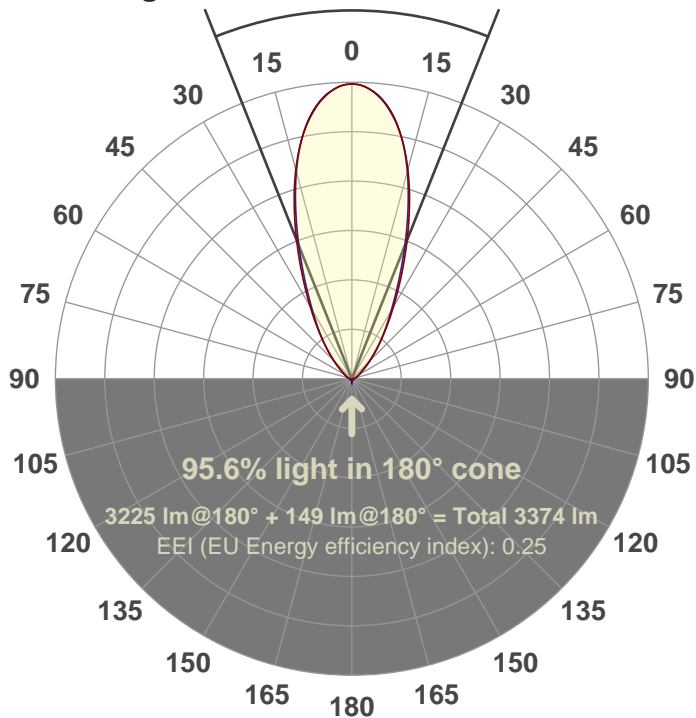
Power: 50.2 W

PF: 1.0

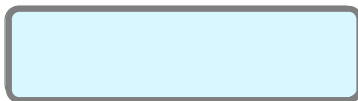


43.4°

Beam angle



Color



CIE 1931
x: 0.314
y: 0.324

Product name:

FL50-CM-RGBW65K-IM-40-ELV-SM-WHITE

Date and time:

30-May-18 1:57:48 PM

Additional Information:

LED: RGBW

FIXTURE: FL50

FILM: 250257 (40°)

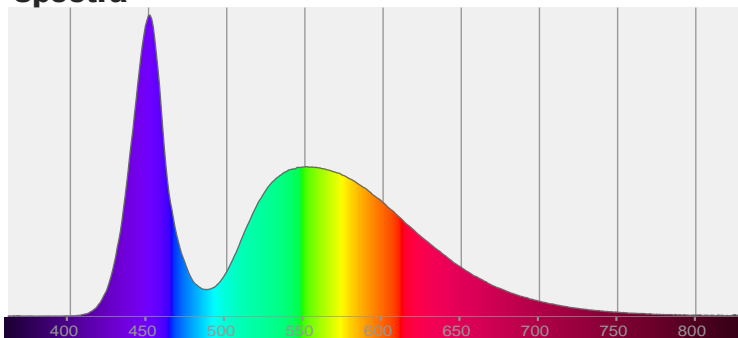
COLORAMP: ON

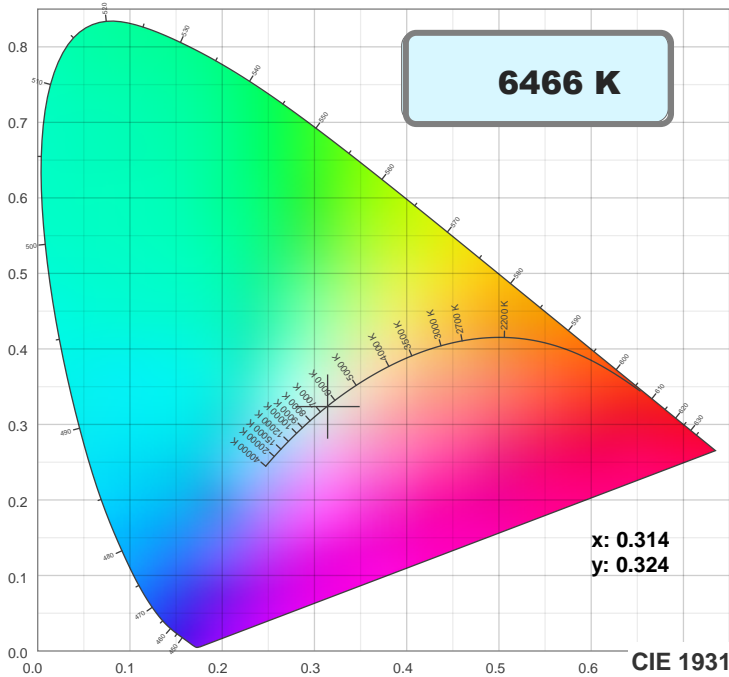
STABILIZED: YES

COLOR (RGBW): WHITE

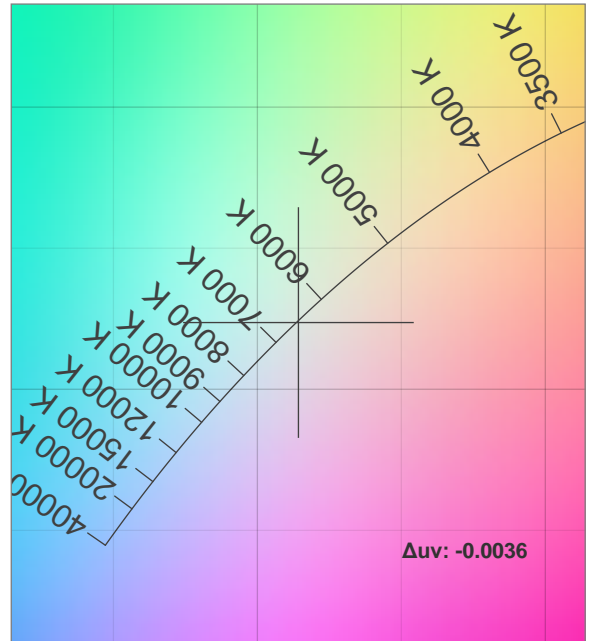
PERFORMED BY: ABDULLAH QURESHI

Spectra



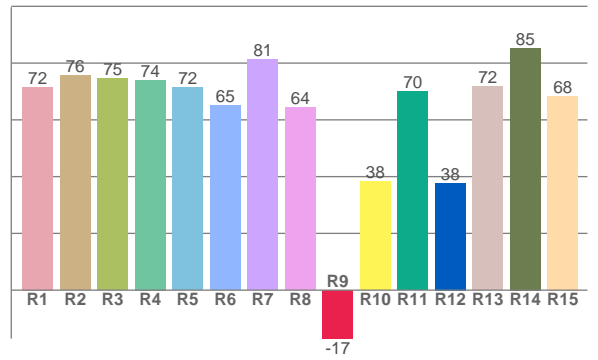
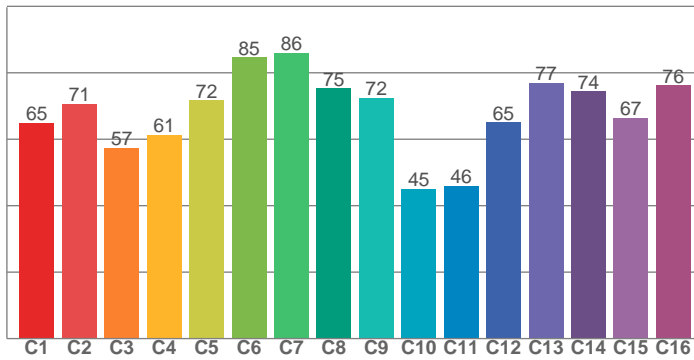


TM30: 67.9

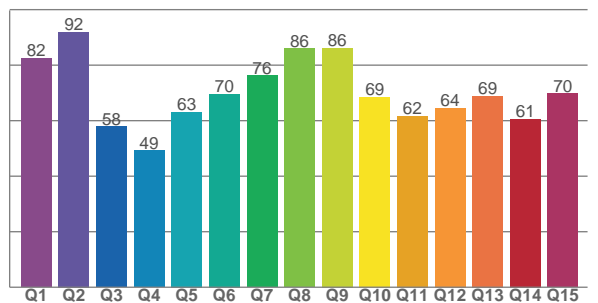


CIE 1931 ZOOM

CRI: 72.2 (R1-R8)



CQS: 68.3



CRI R values, only R1-R8 are used to calculate final CRI value

R1	R2	R3	R4	R5	R6	R7	R8	R9	R10	R11	R12	R13	R14	R15
71.5	75.6	74.5	74.0	71.5	65.0	81.4	64.4	-17.1	38.3	70.1	37.7	71.7	85.3	68.4

TM30 C values, 16 binned values out of total of 99 C values

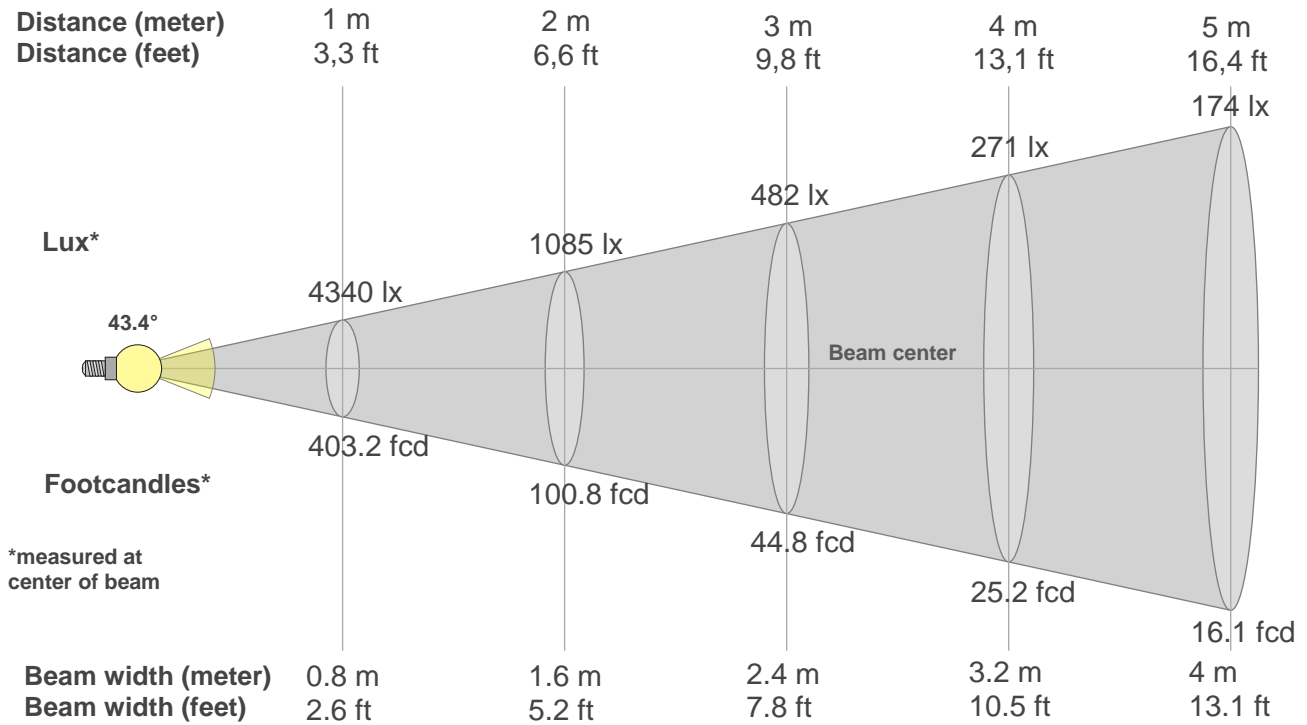
C1	C2	C3	C4	C5	C6	C7	C8	C9	C10	C11	C12	C13	C14	C15	C16
64.9	70.7	57.4	61.3	71.7	84.7	86.1	75.4	72.5	45.1	46.0	65.1	76.9	74.4	66.5	76.2

CQS Q values

Q1	Q2	Q3	Q4	Q5	Q6	Q7	Q8	Q9	Q10	Q11	Q12	Q13	Q14	Q15
82.5	92.0	57.9	49.2	63.1	69.6	76.3	86.0	86.1	68.5	61.7	64.5	69.0	60.6	69.7

Color parameters

Color temperature	Color rendering index	Red component	Color fidelity	Color gamut	Color quality scale	Color coordinate cie 1931	Color coordinate cie 1931	Color coordinate	Color coordinate	Color deviation from black body
CCT	CRI	CRI R9	TM30 Rf	TM30 Rg	CQS	x	y	u	v	Δuv
6466 K	72.2	-17.1	67.9	94.0	68.3	0.314	0.324	0.201	0.310	-0.0036



Beam intensities from 1-20m

1m	2m	3m	4m	5m	6m	7m	8m	9m	10m	11m	12m	13m	14m	15m	16m	17m	18m	19m	20m
3.3ft	6.6ft	9.8ft	13.1ft	16.4ft	19.7ft	23ft	26.2ft	29.5ft	32.8ft	36.1ft	39.4ft	42.7ft	45.9ft	49.2ft	52.5ft	55.8ft	59.1ft	62.3ft	65.6ft
4340lx	1085lx	482lx	271lx	174lx	121lx	89lx	68lx	54lx	43lx	36lx	30lx	26lx	22lx	19lx	17lx	15lx	13lx	12lx	11lx
403.2fcd	100.8fcd	44.8fcd	25.2fcd	16.1fcd	11.2fcd	8.2fcd	6.3fcd	5fcd	4fcd	3.3fcd	2.8fcd	2.4fcd	2.1fcd	1.8fcd	1.6fcd	1.4fcd	1.2fcd	1.1fcd	1fcd

Intensities in 0° c-plane

0°	2°	4°	6°	8°	10°	12°	14°	16°	18°	20°	22°	24°	26°	28°	30°	32°	34°	36°	38°
4340	4320	4251	4142	3992	3805	3581	3327	3045	2748	2449	2160	1889	1642	1422	1227	1058	908	776	661
100%	100%	98%	95%	92%	88%	83%	77%	70%	63%	56%	50%	44%	38%	33%	28%	24%	21%	18%	15%

Intensities in 90° c-plane

0°	2°	4°	6°	8°	10°	12°	14°	16°	18°	20°	22°	24°	26°	28°	30°	32°	34°	36°	38°
4340	4320	4255	4152	4005	3816	3582	3306	3002	2684	2368	2069	1794	1550	1339	1161	1009	880	764	660
100%	100%	98%	96%	92%	88%	83%	76%	69%	62%	55%	48%	41%	36%	31%	27%	23%	20%	18%	15%

Intensities in 180° c-plane

0°	2°	4°	6°	8°	10°	12°	14°	16°	18°	20°	22°	24°	26°	28°	30°	32°	34°	36°	38°
4340	4320	4251	4142	3992	3805	3581	3327	3045	2748	2449	2160	1889	1642	1422	1227	1058	908	776	661
100%	100%	98%	95%	92%	88%	83%	77%	70%	63%	56%	50%	44%	38%	33%	28%	24%	21%	18%	15%

Intensities in 270° c-plane

0°	2°	4°	6°	8°	10°	12°	14°	16°	18°	20°	22°	24°	26°	28°	30°	32°	34°	36°	38°
4340	4320	4255	4152	4005	3816	3582	3306	3002	2684	2368	2069	1794	1550	1339	1161	1009	880	764	660
100%	100%	98%	96%	92%	88%	83%	76%	69%	62%	55%	48%	41%	36%	31%	27%	23%	20%	18%	15%

Beam angle 50%	Field angle 10%	Cutoff angle 2,5%	Intensity ratio in 120° cone	Intensity ratio in 90° cone
43.4°	86.5°	124.7°	89.9%	81.7%