

**Light efficiency:**

**12 Lumen/Watt**

**Light quality:**

**CRI: 0.0**

**Color temperature:**

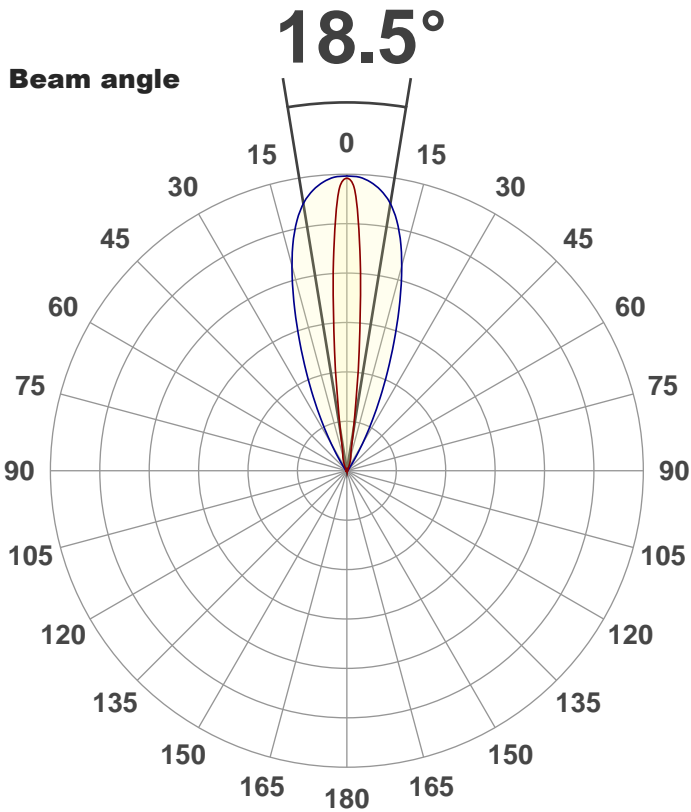
**0 K**

**Output: 578 lm**

**Peak: 3222 cd**

**Power: 50.0 W**

**PF: 1.0**



**Product name:**

**FL50-CM-RGBW65K-IM-40X10-ELV-SM-BLUE**

**Date and time:**

**13-Aug-18 2:00:38 PM**

**Additional Information:**

**LED: RGBW**

**FIXTURE: FL50**

**FILM: 250269 (40°X10°)**

**COLORAMP: ON**

**STABILIZED: YES**

**COLOR (RGBW): BLUE**

**FWHM: 38.8°x10.7°**

**PERFORMED BY: ABDULLAH QURESHI**

**Color**

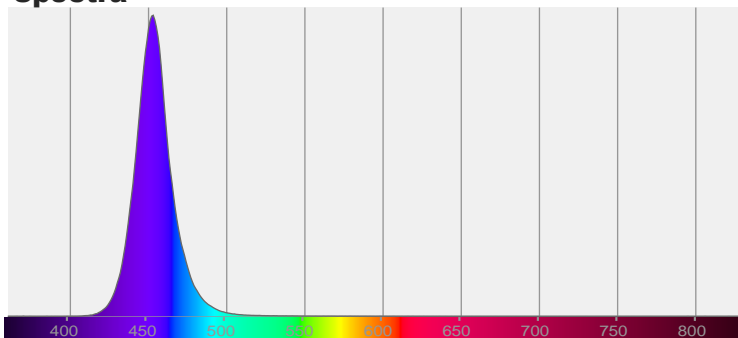


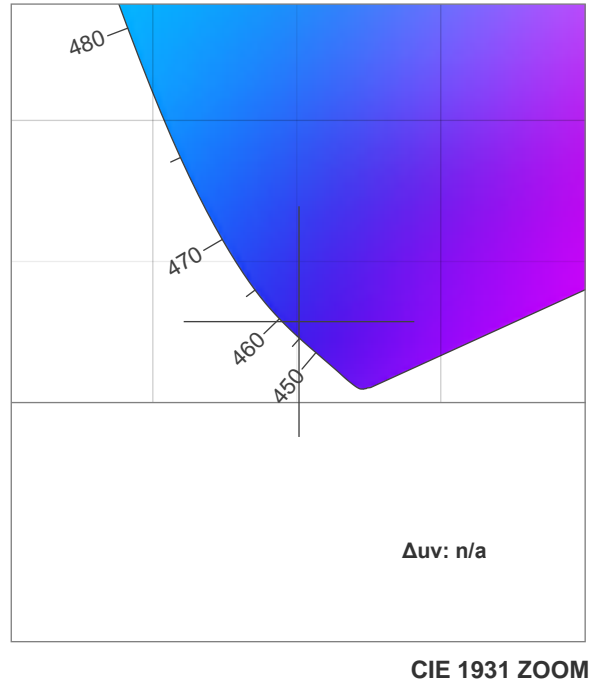
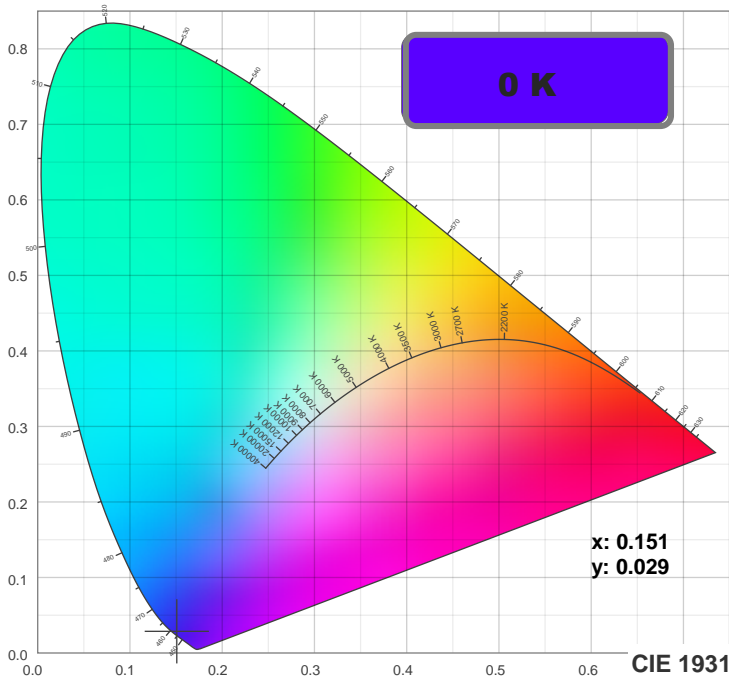
**CIE 1931**

**x: 0.151**

**y: 0.029**

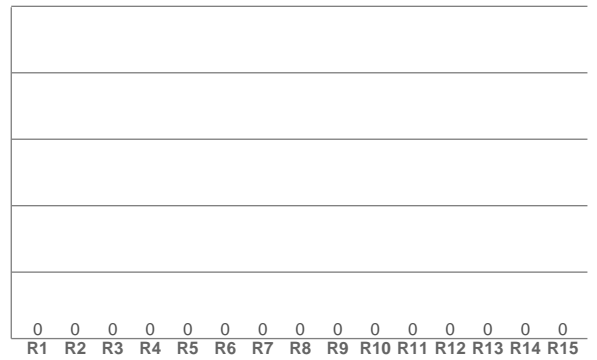
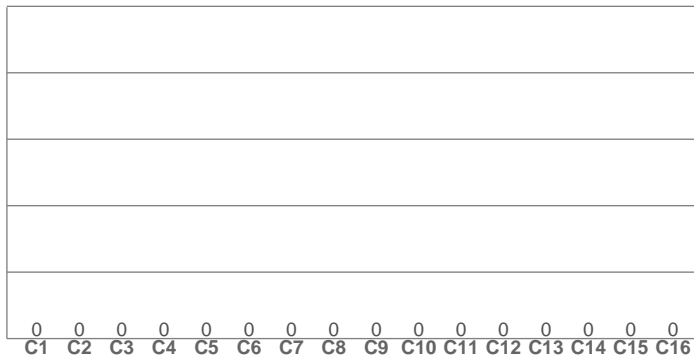
**Spectra**





**TM30: 0.0**

**CRI: 0.0 (R1-R8)**



**CRI R values, only R1-R8 are used to calculate final CRI value**

R1	R2	R3	R4	R5	R6	R7	R8	R9	R10	R11	R12	R13	R14	R15
0.0	0.0	0.0	0.0	0.0	0.0	0.0	0.0	0.0	0.0	0.0	0.0	0.0	0.0	0.0

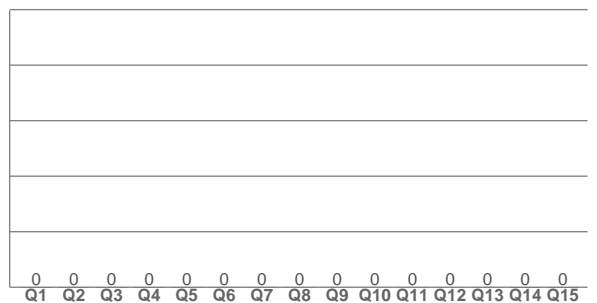
**TM30 C values, 16 binned values out of total of 99 C values**

C1	C2	C3	C4	C5	C6	C7	C8	C9	C10	C11	C12	C13	C14	C15	C16
0.0	0.0	0.0	0.0	0.0	0.0	0.0	0.0	0.0	0.0	0.0	0.0	0.0	0.0	0.0	0.0

**CQS Q values**

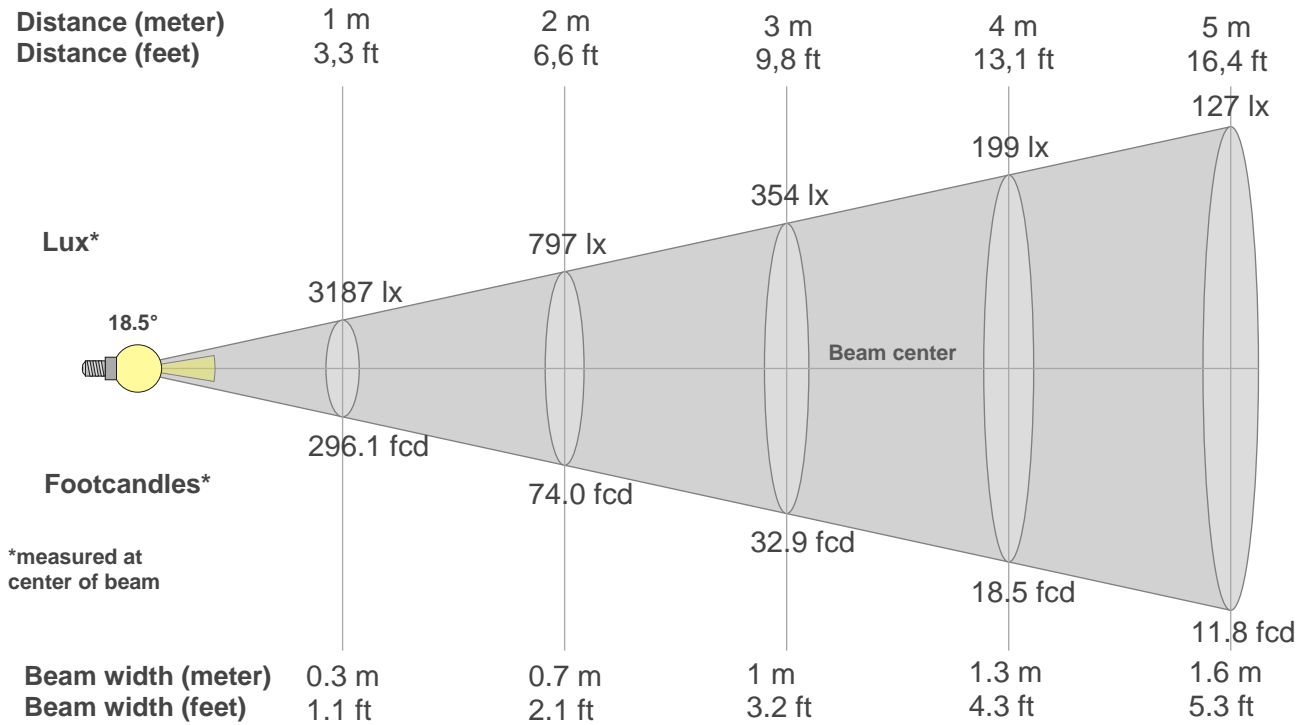
Q1	Q2	Q3	Q4	Q5	Q6	Q7	Q8	Q9	Q10	Q11	Q12	Q13	Q14	Q15
0.0	0.0	0.0	0.0	0.0	0.0	0.0	0.0	0.0	0.0	0.0	0.0	0.0	0.0	0.0

**CQS: 0.0**



## Color parameters

Color temperature	Color rendering index	Red component	Color fidelity	Color gamut	Color quality scale	Color coordinate cie 1931	Color coordinate cie 1931	Color coordinate	Color coordinate	Color deviation from black body
CCT	CRI	CRI R9	TM30 Rf	TM30 Rg	CQS	x	y	u	v	Δuv
0 K	0.0	0.0	0.0	0.0	0.0	0.151	0.029	0.198	0.057	n/a



### Beam intensities from 1-20m

1m	2m	3m	4m	5m	6m	7m	8m	9m	10m	11m	12m	13m	14m	15m	16m	17m	18m	19m	20m
3.3ft	6.6ft	9.8ft	13.1ft	16.4ft	19.7ft	23ft	26.2ft	29.5ft	32.8ft	36.1ft	39.4ft	42.7ft	45.9ft	49.2ft	52.5ft	55.8ft	59.1ft	62.3ft	65.6ft
3187lx	797lx	354lx	199lx	127lx	89lx	65lx	50lx	39lx	32lx	26lx	22lx	19lx	16lx	14lx	12lx	11lx	10lx	9lx	8lx
296.1fcd	74fcd	32.9fcd	18.5fcd	11.8fcd	8.2fcd	6fcd	4.6fcd	3.7fcd	3fcd	2.4fcd	2.1fcd	1.8fcd	1.5fcd	1.3fcd	1.2fcd	1fcd	0.9fcd	0.8fcd	0.7fcd

### Intensities in 0° c-plane

0°	1°	2°	3°	4°	5°	6°	7°	8°	9°	10°	11°	12°	13°	14°	15°	16°	17°	18°	19°
3187	3093	2898	2533	2142	1699	1273	959	646	494	354	281	234	202	185	170	158	145	131	117
100%	97%	91%	79%	67%	53%	40%	30%	20%	15%	11%	9%	7%	6%	6%	5%	5%	5%	4%	4%

### Intensities in 90° c-plane

0°	1°	2°	3°	4°	5°	6°	7°	8°	9°	10°	11°	12°	13°	14°	15°	16°	17°	18°	19°
3187	3214	3209	3197	3176	3150	3115	3078	3024	2971	2890	2808	2702	2587	2456	2310	2159	1998	1837	1675
100%	101%	101%	100%	100%	99%	98%	97%	95%	93%	91%	88%	85%	81%	77%	72%	68%	63%	58%	53%

### Intensities in 180° c-plane

0°	1°	2°	3°	4°	5°	6°	7°	8°	9°	10°	11°	12°	13°	14°	15°	16°	17°	18°	19°
3187	3093	2898	2533	2142	1699	1273	959	646	494	354	281	234	202	185	170	158	145	131	117
100%	97%	91%	79%	67%	53%	40%	30%	20%	15%	11%	9%	7%	6%	6%	5%	5%	5%	4%	4%

### Intensities in 270° c-plane

0°	1°	2°	3°	4°	5°	6°	7°	8°	9°	10°	11°	12°	13°	14°	15°	16°	17°	18°	19°
3187	3214	3209	3197	3176	3150	3115	3078	3024	2971	2890	2808	2702	2587	2456	2310	2159	1998	1837	1675
100%	101%	101%	100%	100%	99%	98%	97%	95%	93%	91%	88%	85%	81%	77%	72%	68%	63%	58%	53%

Beam angle 50%	Field angle 10%	Cutoff angle 2,5%	Intensity ratio in 120° cone	Intensity ratio in 90° cone
18.5°	33.3°	56.1°	90.8%	87.5%