

Light efficiency:



Light quality:



Color temperature:



Output: 3231 lm

Peak: 2895 cd

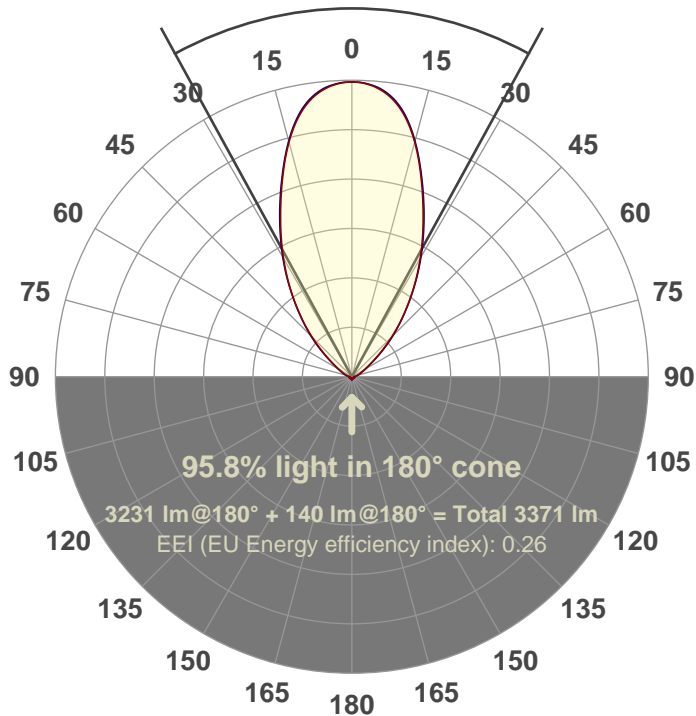
Power: 49.5 W

PF: 1.0

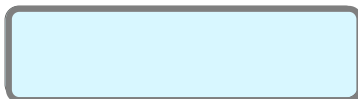


57.4°

Beam angle



Color



CIE 1931
x: 0.314
y: 0.323

Product name:

FL50-CM-RGBW65K-IM-60-ELV-SM-WHITE

Date and time:

30-May-18 4:06:20 PM

Additional Information:

LED: RGBW

FIXTURE: FL50

FILM: 250258 (55°)

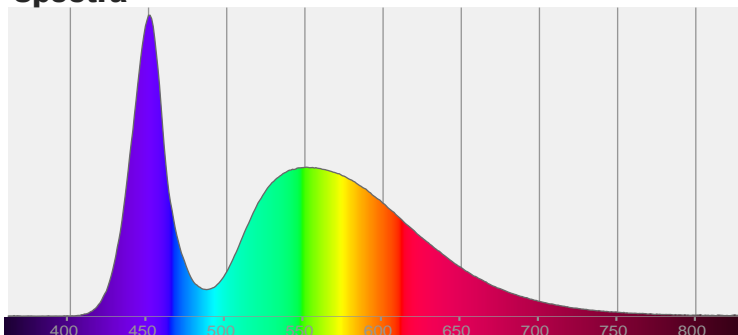
COLORAMP: ON

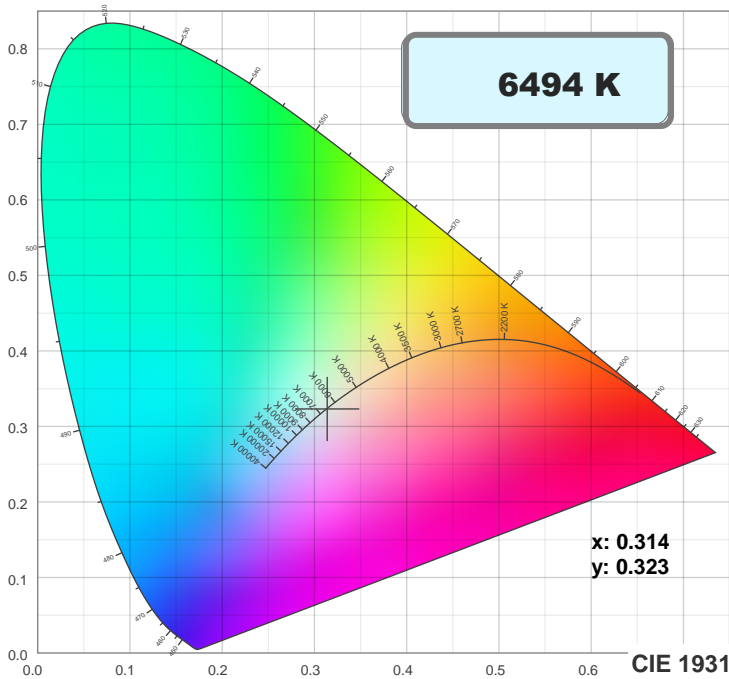
STABILIZED: YES

COLOR (RGBW): WHITE

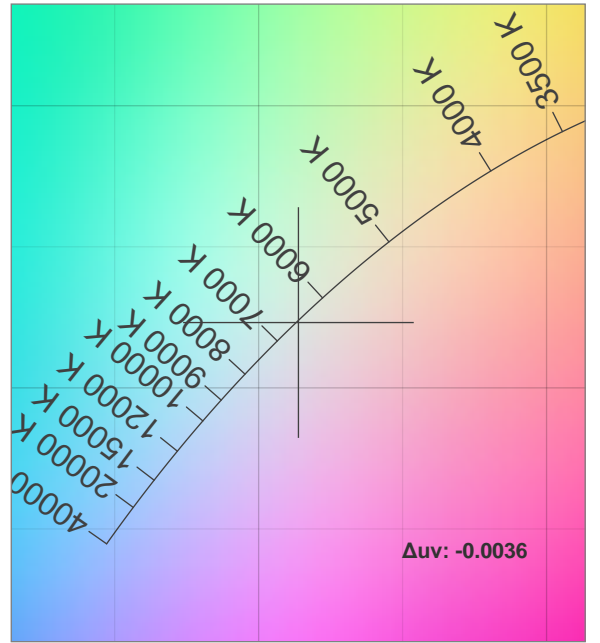
PERFORMED BY: ABDULLAH QURESHI

Spectra

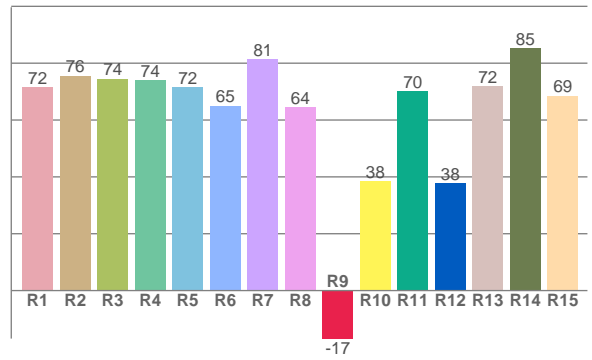
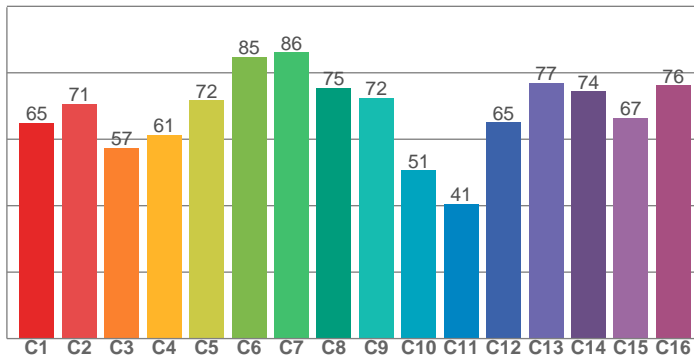




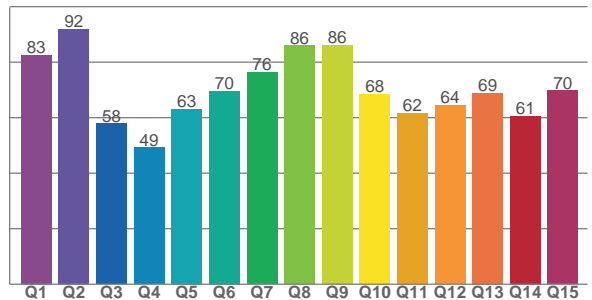
TM30: 67.9



CRI: 72.3 (R1-R8)



CQS: 68.3



CRI R values, only R1-R8 are used to calculate final CRI value

R1	R2	R3	R4	R5	R6	R7	R8	R9	R10	R11	R12	R13	R14	R15
71.6	75.6	74.5	74.1	71.6	65.0	81.4	64.5	-16.9	38.4	70.1	37.8	71.8	85.3	68.5

TM30 C values, 16 binned values out of total of 99 C values

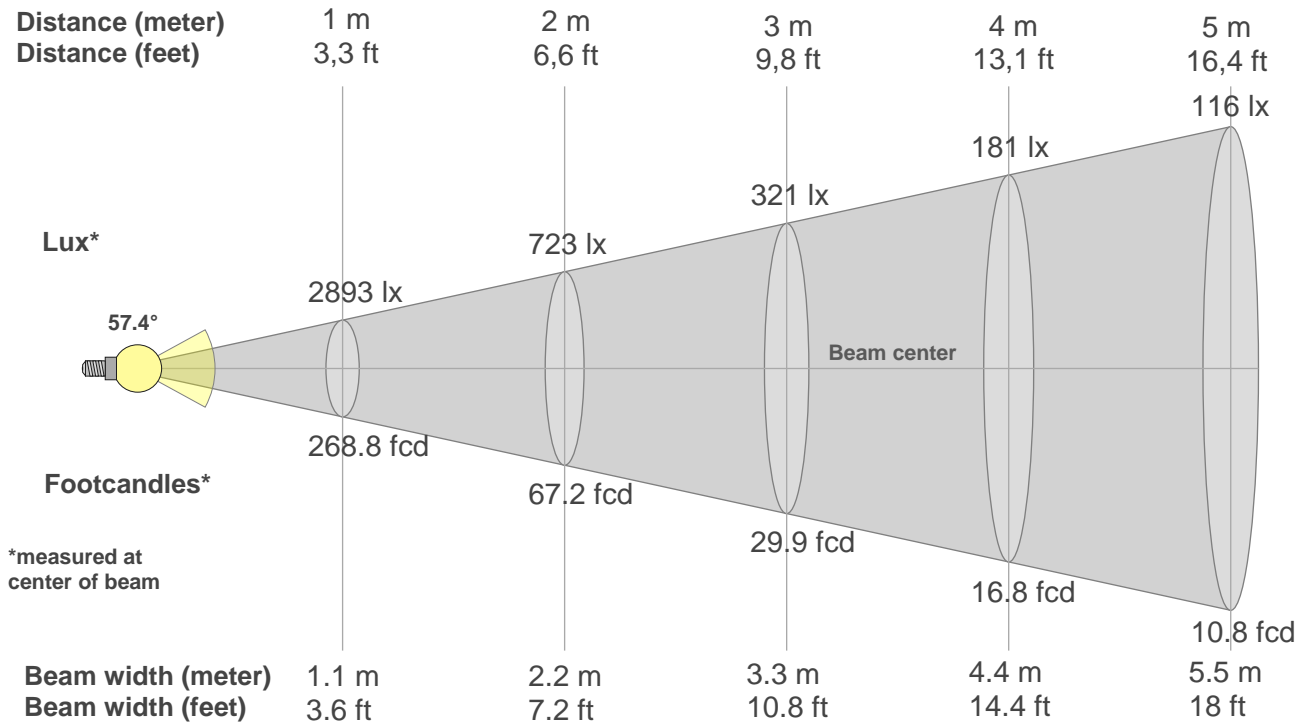
C1	C2	C3	C4	C5	C6	C7	C8	C9	C10	C11	C12	C13	C14	C15	C16
65.0	70.7	57.4	61.3	71.7	84.7	86.1	75.4	72.5	50.7	40.6	65.0	76.9	74.5	66.5	76.2

CQS Q values

Q1	Q2	Q3	Q4	Q5	Q6	Q7	Q8	Q9	Q10	Q11	Q12	Q13	Q14	Q15
82.5	92.0	57.9	49.2	63.1	69.6	76.4	86.0	86.1	68.5	61.7	64.5	69.0	60.7	69.8

Color parameters

Color temperature	Color rendering index	Red component	Color fidelity	Color gamut	Color quality scale	Color coordinate cie 1931	Color coordinate cie 1931	Color coordinate	Color coordinate	Color deviation from black body
CCT	CRI	CRI R9	TM30 Rf	TM30 Rg	CQS	x	y	u	v	Δuv
6494 K	72.3	-16.9	67.9	93.8	68.3	0.314	0.323	0.201	0.310	-0.0036



Beam intensities from 1-20m

1m	2m	3m	4m	5m	6m	7m	8m	9m	10m	11m	12m	13m	14m	15m	16m	17m	18m	19m	20m
3.3ft	6.6ft	9.8ft	13.1ft	16.4ft	19.7ft	23ft	26.2ft	29.5ft	32.8ft	36.1ft	39.4ft	42.7ft	45.9ft	49.2ft	52.5ft	55.8ft	59.1ft	62.3ft	65.6ft
2893lx	723lx	321lx	181lx	116lx	80lx	59lx	45lx	36lx	29lx	24lx	20lx	17lx	15lx	13lx	11lx	10lx	9lx	8lx	7lx
268.8fcd	67.2fcd	29.9fcd	16.8fcd	10.8fcd	7.5fcd	5.5fcd	4.2fcd	3.3fcd	2.7fcd	2.2fcd	1.9fcd	1.6fcd	1.4fcd	1.2fcd	1fcd	0.9fcd	0.8fcd	0.7fcd	0.7fcd

Intensities in 0° c-plane

0°	5°	10°	15°	20°	25°	30°	35°	40°	45°	50°	55°	60°	65°	70°	75°	80°	85°	90°	95°
2893	2845	2684	2385	2008	1656	1343	1052	791	556	364	234	156	111	82	60	42	29	24	0
100%	98%	93%	82%	69%	57%	46%	36%	27%	19%	13%	8%	5%	4%	3%	2%	1%	1%	1%	0%

Intensities in 90° c-plane

0°	5°	10°	15°	20°	25°	30°	35°	40°	45°	50°	55°	60°	65°	70°	75°	80°	85°	90°	95°
2893	2854	2698	2395	2023	1674	1356	1056	790	569	374	231	153	111	82	60	43	29	24	0
100%	99%	93%	83%	70%	58%	47%	37%	27%	20%	13%	8%	5%	4%	3%	2%	1%	1%	1%	0%

Intensities in 180° c-plane

0°	5°	10°	15°	20°	25°	30°	35°	40°	45°	50°	55°	60°	65°	70°	75°	80°	85°	90°	95°
2893	2845	2684	2385	2008	1656	1343	1052	791	556	364	234	156	111	82	60	42	29	24	0
100%	98%	93%	82%	69%	57%	46%	36%	27%	19%	13%	8%	5%	4%	3%	2%	1%	1%	1%	0%

Intensities in 270° c-plane

0°	5°	10°	15°	20°	25°	30°	35°	40°	45°	50°	55°	60°	65°	70°	75°	80°	85°	90°	95°
2893	2854	2698	2395	2023	1674	1356	1056	790	569	374	231	153	111	82	60	43	29	24	0
100%	99%	93%	83%	70%	58%	47%	37%	27%	20%	13%	8%	5%	4%	3%	2%	1%	1%	1%	0%

Beam angle 50%	Field angle 10%	Cutoff angle 2,5%	Intensity ratio in 120° cone	Intensity ratio in 90° cone
57.4°	105.3°	144.3°	89.6%	77.7%