

Light efficiency:

39 Lumen/Watt

Light quality:

CRI: 0.0

Color temperature:

0 K

Output: 1926 lm

Peak: 2993 cd

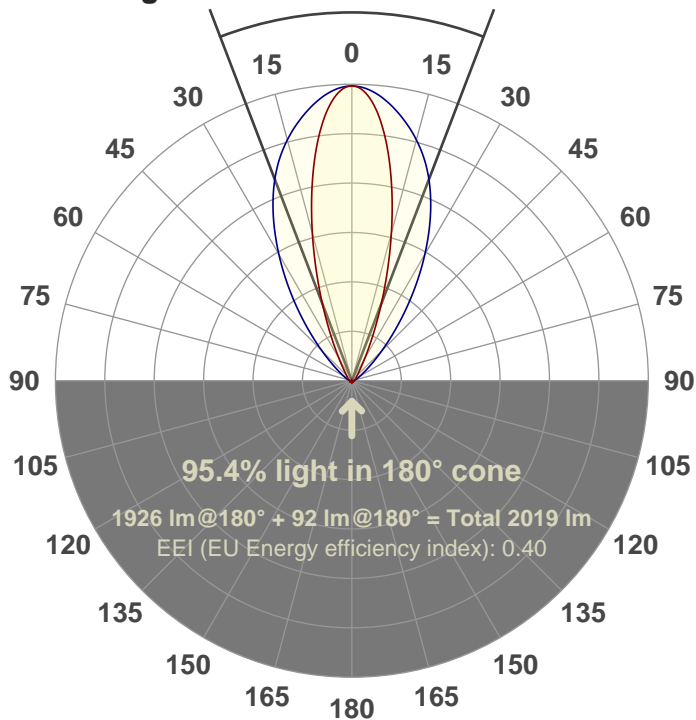
Power: 50.0 W

PF: 1.0



41.9°

Beam angle



Color



CIE 1931
x: 0.157
y: 0.706

Product name:

FL50-CM-RGBW65K-IM-60X30-ELV-SM-GREEN

Date and time:

04-Jun-18 9:41:43 AM

Additional Information:

LED: RGBW

FIXTURE: FL50

FILM: 250267 (60°X30°)

COLORAMP: ON

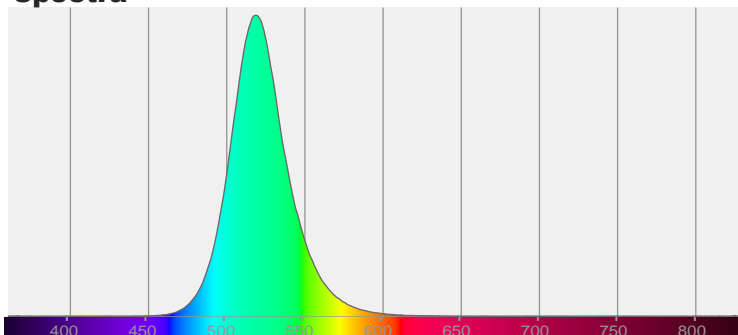
STABILIZED: YES

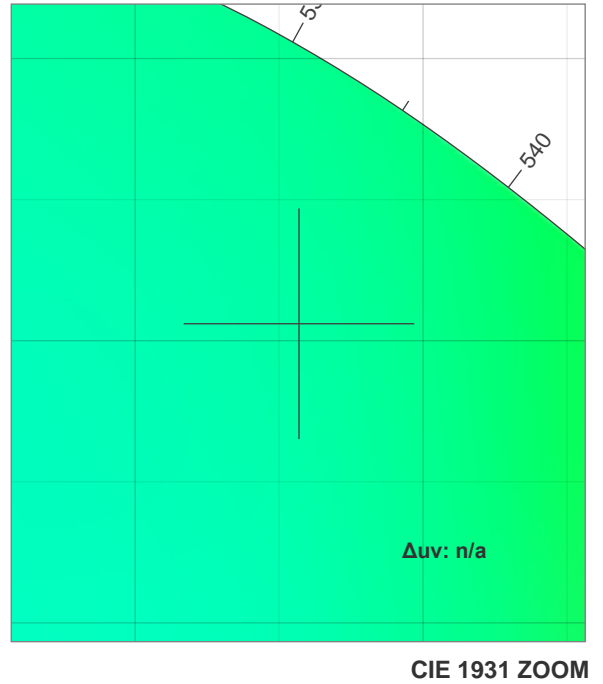
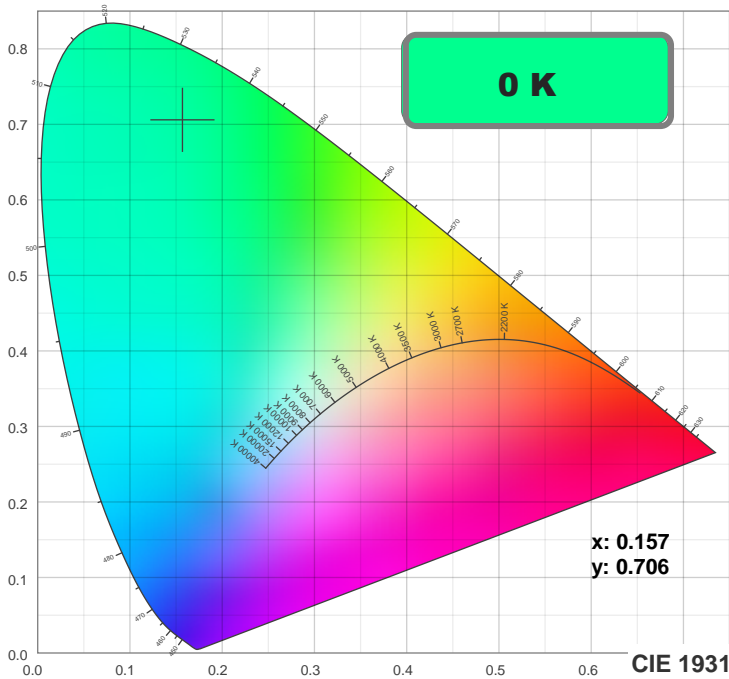
COLOR (RGBW): GREEN

FWHM: 59.7°X30.8°

PERFORMED BY: ABDULLAH QURESHI

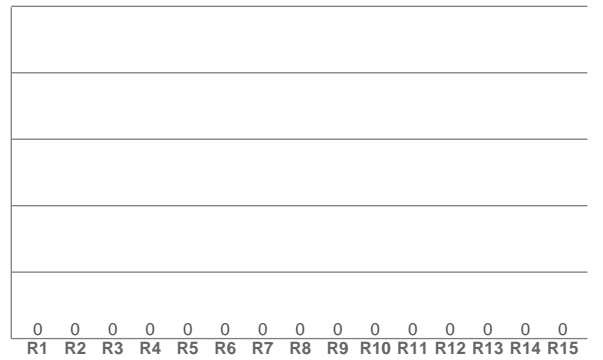
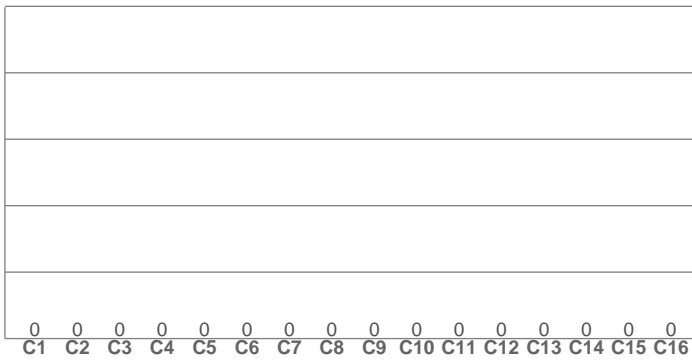
Spectra





TM30: 0.0

CRI: 0.0 (R1-R8)



CRI R values, only R1-R8 are used to calculate final CRI value

R1	R2	R3	R4	R5	R6	R7	R8	R9	R10	R11	R12	R13	R14	R15
0.0	0.0	0.0	0.0	0.0	0.0	0.0	0.0	0.0	0.0	0.0	0.0	0.0	0.0	0.0

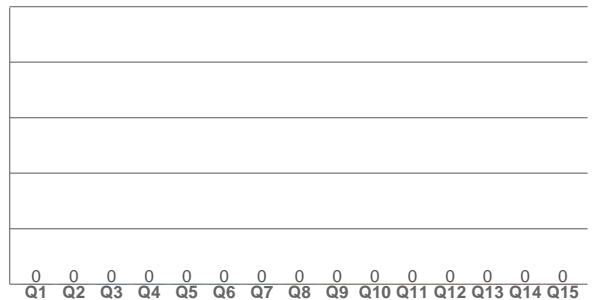
TM30 C values, 16 binned values out of total of 99 C values

C1	C2	C3	C4	C5	C6	C7	C8	C9	C10	C11	C12	C13	C14	C15	C16
0.0	0.0	0.0	0.0	0.0	0.0	0.0	0.0	0.0	0.0	0.0	0.0	0.0	0.0	0.0	0.0

CQS Q values

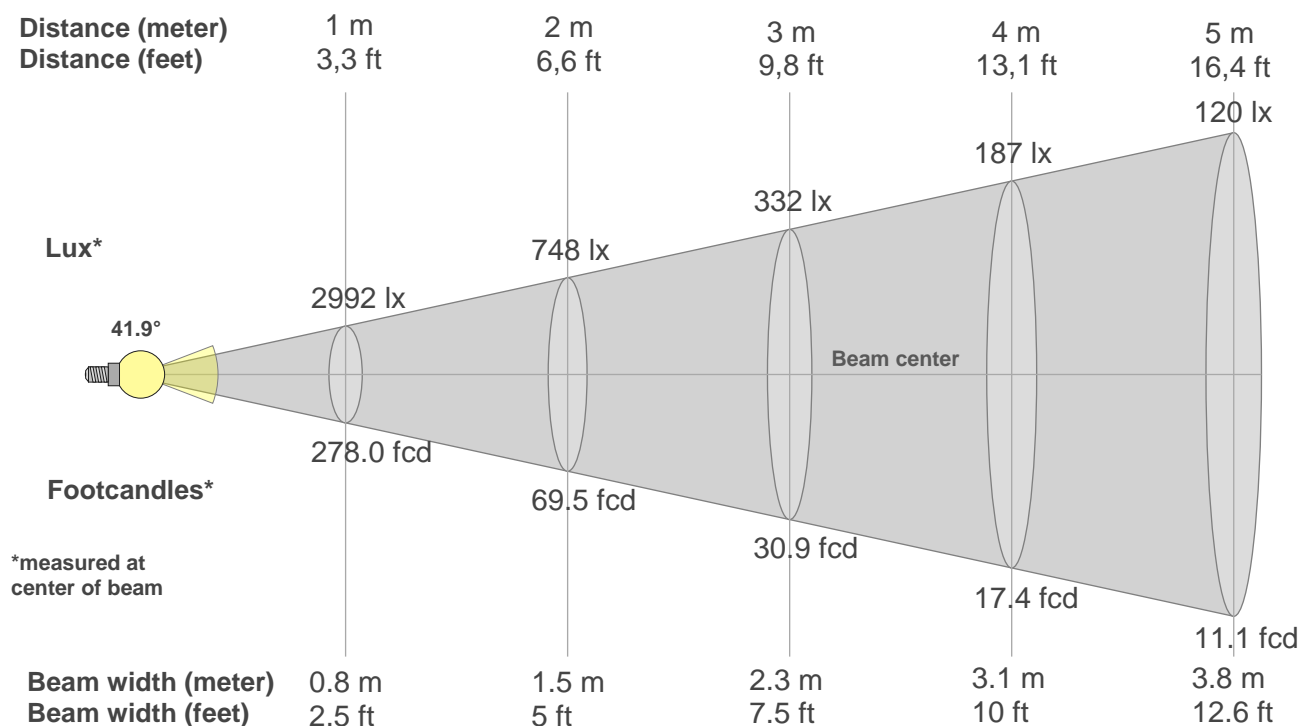
Q1	Q2	Q3	Q4	Q5	Q6	Q7	Q8	Q9	Q10	Q11	Q12	Q13	Q14	Q15
0.0	0.0	0.0	0.0	0.0	0.0	0.0	0.0	0.0	0.0	0.0	0.0	0.0	0.0	0.0

CQS: 0.0



Color parameters

Color temperature	Color rendering index	Red component	Color fidelity	Color gamut	Color quality scale	Color coordinate cie 1931	Color coordinate cie 1931	Color coordinate	Color coordinate	Color deviation from black body
CCT	CRI	CRI R9	TM30 Rf	TM30 Rg	CQS	x	y	u	v	Δuv
0 K	0.0	0.0	0.0	0.0	0.0	0.157	0.706	0.056	0.380	n/a



Beam intensities from 1-20m

1m	2m	3m	4m	5m	6m	7m	8m	9m	10m	11m	12m	13m	14m	15m	16m	17m	18m	19m	20m
3.3ft	6.6ft	9.8ft	13.1ft	16.4ft	19.7ft	23ft	26.2ft	29.5ft	32.8ft	36.1ft	39.4ft	42.7ft	45.9ft	49.2ft	52.5ft	55.8ft	59.1ft	62.3ft	65.6ft
2992lx	748lx	332lx	187lx	120lx	83lx	61lx	47lx	37lx	30lx	25lx	21lx	18lx	15lx	13lx	12lx	10lx	9lx	8lx	7lx
278fcd	69.5fcd	30.9fcd	17.4fcd	11.1fcd	7.7fcd	5.7fcd	4.3fcd	3.4fcd	2.8fcd	2.3fcd	1.9fcd	1.6fcd	1.4fcd	1.2fcd	1.1fcd	1fcd	0.9fcd	0.8fcd	0.7fcd

Intensities in 0° c-plane

0°	2°	4°	6°	8°	10°	12°	14°	16°	18°	20°	22°	24°	26°	28°	30°	32°	34°	36°	38°
2992	2956	2850	2684	2469	2222	1956	1685	1418	1164	935	736	570	438	336	261	208	169	141	121
100%	99%	95%	90%	83%	74%	65%	56%	47%	39%	31%	25%	19%	15%	11%	9%	7%	6%	5%	4%

Intensities in 90° c-plane

0°	2°	4°	6°	8°	10°	12°	14°	16°	18°	20°	22°	24°	26°	28°	30°	32°	34°	36°	38°
2992	2982	2947	2895	2830	2754	2670	2581	2482	2373	2251	2116	1969	1813	1649	1483	1317	1152	994	845
100%	100%	99%	97%	95%	92%	89%	86%	83%	79%	75%	71%	66%	61%	55%	50%	44%	39%	33%	28%

Intensities in 180° c-plane

0°	2°	4°	6°	8°	10°	12°	14°	16°	18°	20°	22°	24°	26°	28°	30°	32°	34°	36°	38°
2992	2956	2850	2684	2469	2222	1956	1685	1418	1164	935	736	570	438	336	261	208	169	141	121
100%	99%	95%	90%	83%	74%	65%	56%	47%	39%	31%	25%	19%	15%	11%	9%	7%	6%	5%	4%

Intensities in 270° c-plane

0°	2°	4°	6°	8°	10°	12°	14°	16°	18°	20°	22°	24°	26°	28°	30°	32°	34°	36°	38°
2992	2982	2947	2895	2830	2754	2670	2581	2482	2373	2251	2116	1969	1813	1649	1483	1317	1152	994	845
100%	100%	99%	97%	95%	92%	89%	86%	83%	79%	75%	71%	66%	61%	55%	50%	44%	39%	33%	28%

Beam angle 50%	Field angle 10%	Cutoff angle 2,5%	Intensity ratio in 120° cone	Intensity ratio in 90° cone
41.9°	74.4°	108.1°	90.1%	83.4%