

Light efficiency:



Light quality:



Color temperature:



Output: 3241 lm

Peak: 5066 cd

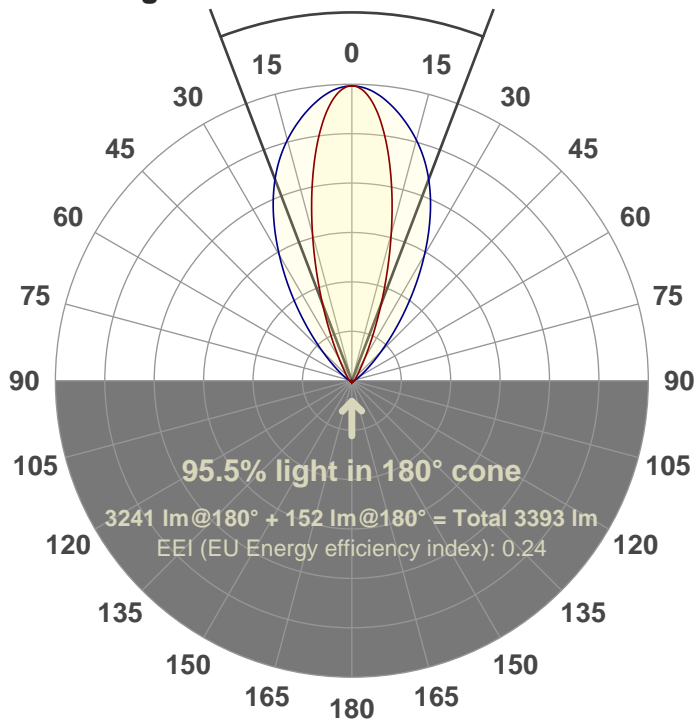
Power: 50.0 W

PF: 1.0

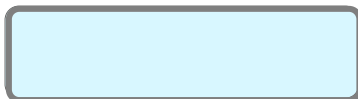


41.8°

Beam angle



Color



CIE 1931
x: 0.314
y: 0.323

Product name:

FL50-CM-RGBW65K-IM-60X30-ELV-SM-WHITE

Date and time:

04-Jun-18 10:17:25 AM

Additional Information:

LED: RGBW

FIXTURE: FL50

FILM: 250267 (60°X30°)

COLORAMP: ON

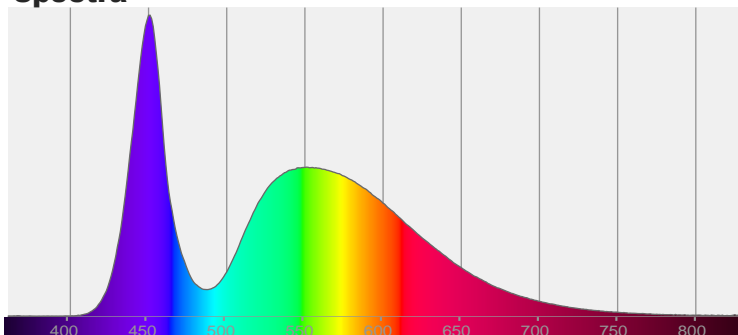
STABILIZED: YES

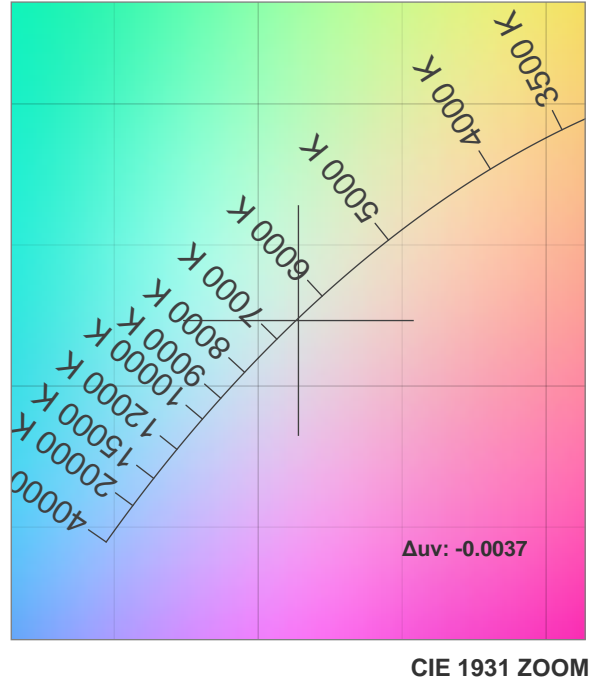
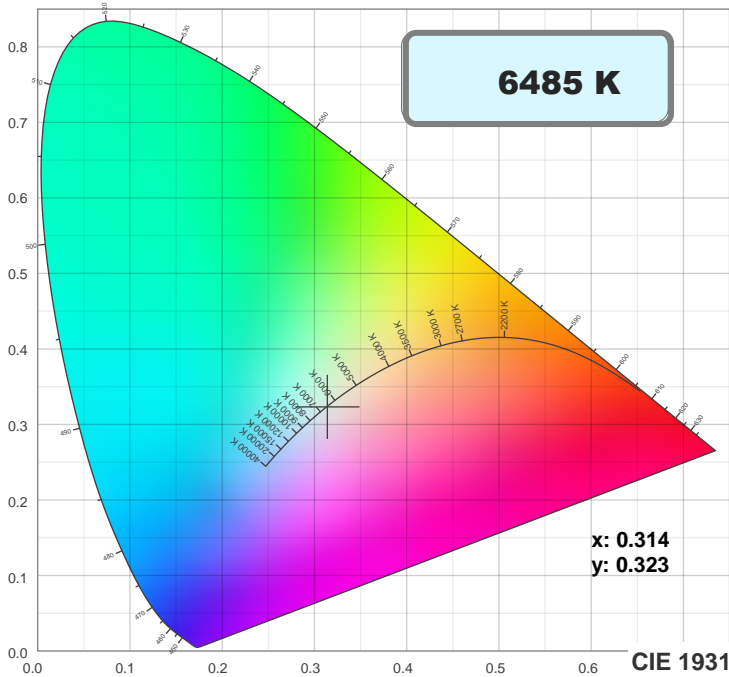
COLOR (RGBW): WHITE

FWHM: 59.5°X30.7°

PERFORMED BY: ABDULLAH QURESHI

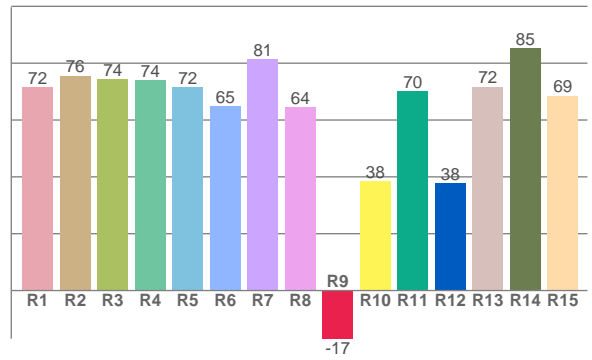
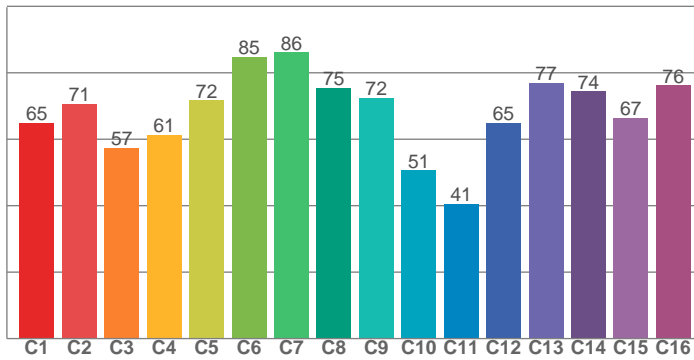
Spectra



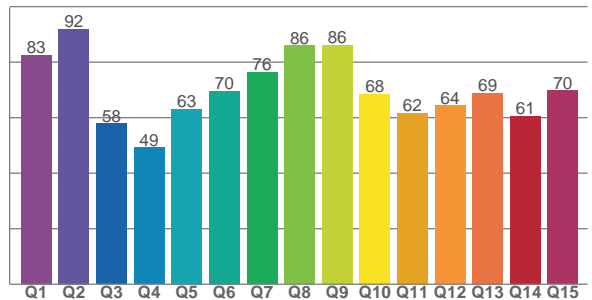


TM30: 67.9

CRI: 72.3 (R1-R8)



CQS: 68.2



CRI R values, only R1-R8 are used to calculate final CRI value

R1	R2	R3	R4	R5	R6	R7	R8	R9	R10	R11	R12	R13	R14	R15
71.6	75.6	74.5	74.0	71.6	65.0	81.4	64.5	-16.9	38.4	70.1	37.8	71.8	85.3	68.5

TM30 C values, 16 binned values out of total of 99 C values

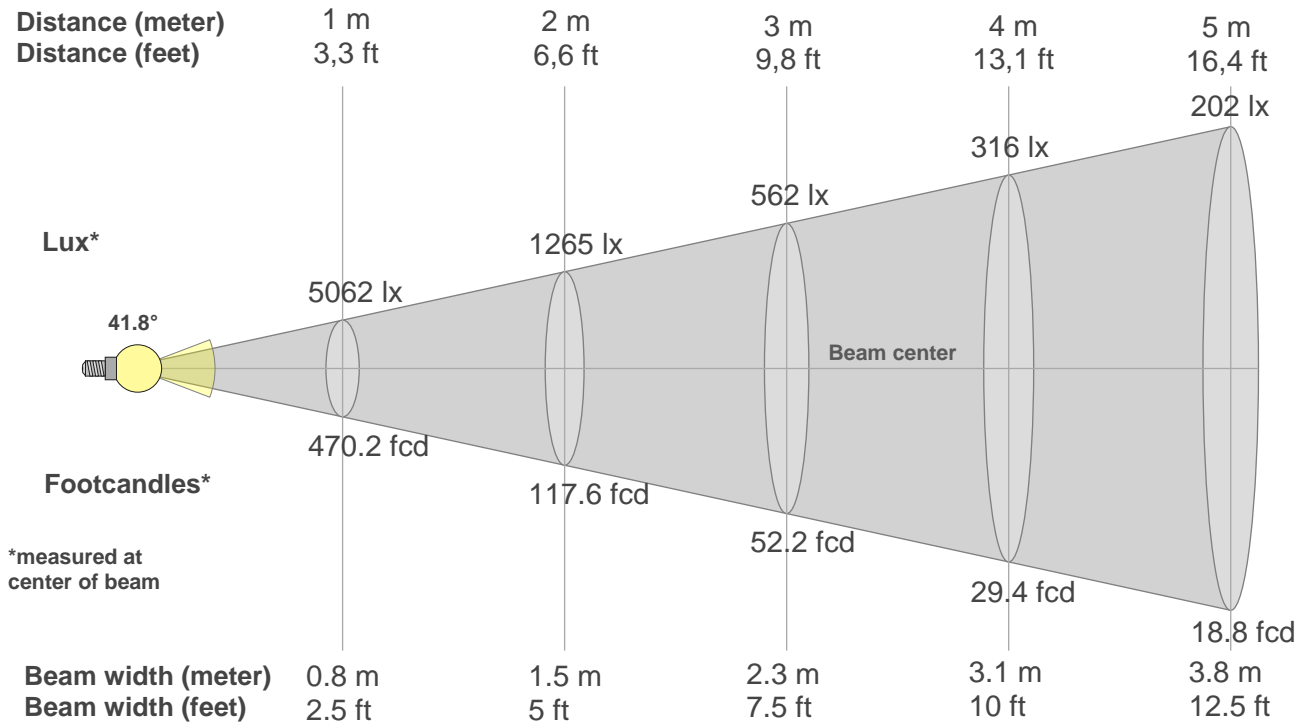
C1	C2	C3	C4	C5	C6	C7	C8	C9	C10	C11	C12	C13	C14	C15	C16
64.9	70.7	57.3	61.2	71.7	84.7	86.1	75.4	72.5	50.6	40.5	65.0	76.9	74.4	66.5	76.2

CQS Q values

Q1	Q2	Q3	Q4	Q5	Q6	Q7	Q8	Q9	Q10	Q11	Q12	Q13	Q14	Q15
82.5	92.0	57.8	49.2	63.1	69.6	76.3	86.0	86.1	68.5	61.6	64.4	68.9	60.6	69.8

Color parameters

Color temperature	Color rendering index	Red component	Color fidelity	Color gamut	Color quality scale	Color coordinate cie 1931	Color coordinate cie 1931	Color coordinate	Color coordinate	Color deviation from black body
CCT	CRI	CRI R9	TM30 Rf	TM30 Rg	CQS	x	y	u	v	Δuv
6485 K	72.3	-16.9	67.9	93.8	68.2	0.314	0.323	0.201	0.310	-0.0037



Beam intensities from 1-20m

1m	2m	3m	4m	5m	6m	7m	8m	9m	10m	11m	12m	13m	14m	15m	16m	17m	18m	19m	20m
3.3ft	6.6ft	9.8ft	13.1ft	16.4ft	19.7ft	23ft	26.2ft	29.5ft	32.8ft	36.1ft	39.4ft	42.7ft	45.9ft	49.2ft	52.5ft	55.8ft	59.1ft	62.3ft	65.6ft
5062lx	1265lx	562lx	316lx	202lx	141lx	103lx	79lx	62lx	51lx	42lx	35lx	30lx	26lx	22lx	20lx	18lx	16lx	14lx	13lx
470.2fcd	117.6fcd	52.2fcd	29.4fcd	18.8fcd	13.1fcd	9.6fcd	7.3fcd	5.8fcd	4.7fcd	3.9fcd	3.3fcd	2.8fcd	2.4fcd	2.1fcd	1.8fcd	1.6fcd	1.5fcd	1.3fcd	1.2fcd

Intensities in 0° c-plane

0°	2°	4°	6°	8°	10°	12°	14°	16°	18°	20°	22°	24°	26°	28°	30°	32°	34°	36°	38°
5062	5003	4824	4542	4176	3756	3306	2843	2390	1960	1571	1235	956	733	564	440	349	285	238	203
100%	99%	95%	90%	83%	74%	65%	56%	47%	39%	31%	24%	19%	14%	11%	9%	7%	6%	5%	4%

Intensities in 90° c-plane

0°	2°	4°	6°	8°	10°	12°	14°	16°	18°	20°	22°	24°	26°	28°	30°	32°	34°	36°	38°
5062	5046	4990	4903	4790	4662	4519	4365	4196	4010	3802	3573	3324	3056	2779	2494	2210	1932	1663	1411
100%	100%	99%	97%	95%	92%	89%	86%	83%	79%	75%	71%	66%	60%	55%	49%	44%	38%	33%	28%

Intensities in 180° c-plane

0°	2°	4°	6°	8°	10°	12°	14°	16°	18°	20°	22°	24°	26°	28°	30°	32°	34°	36°	38°
5062	5003	4824	4542	4176	3756	3306	2843	2390	1960	1571	1235	956	733	564	440	349	285	238	203
100%	99%	95%	90%	83%	74%	65%	56%	47%	39%	31%	24%	19%	14%	11%	9%	7%	6%	5%	4%

Intensities in 270° c-plane

0°	2°	4°	6°	8°	10°	12°	14°	16°	18°	20°	22°	24°	26°	28°	30°	32°	34°	36°	38°
5062	5046	4990	4903	4790	4662	4519	4365	4196	4010	3802	3573	3324	3056	2779	2494	2210	1932	1663	1411
100%	100%	99%	97%	95%	92%	89%	86%	83%	79%	75%	71%	66%	60%	55%	49%	44%	38%	33%	28%

Beam angle 50%	Field angle 10%	Cutoff angle 2,5%	Intensity ratio in 120° cone	Intensity ratio in 90° cone
41.8°	74.2°	108°	90.3%	83.6%