

Light efficiency:



Light quality:



Color temperature:



78.9°

Beam angle

Output: 3224 lm

Peak: 1960 cd

Power: 50.0 W

PF: 1.0



Product name:

FL50-CM-RGBW65K-IM-80-ELV-SM-WHITE

Date and time:

31-May-18 12:48:28 PM

Additional Information:

LED: RGBW

FIXTURE: FL50

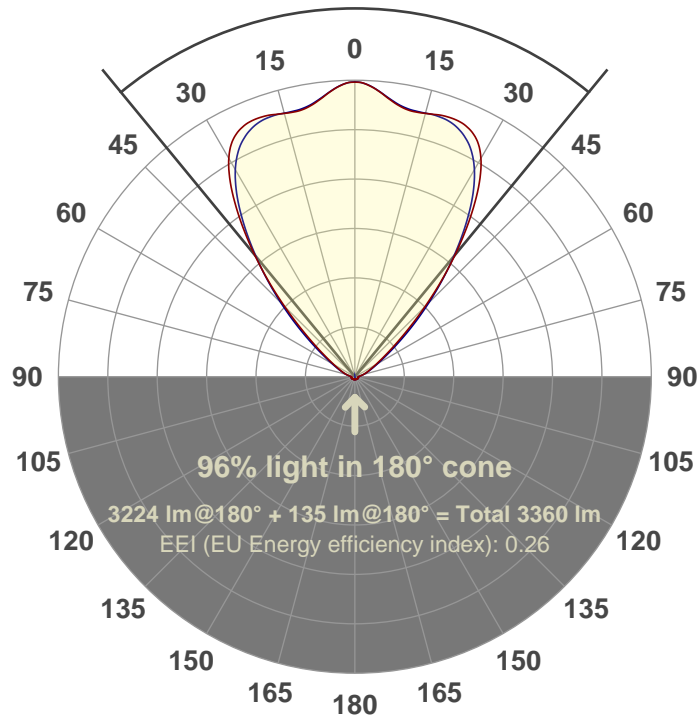
FILM: 250259 (80°)

COLORAMP: ON

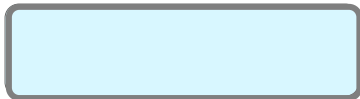
STABILIZED: YES

COLOR (RGBW): WHITE

PERFORMED BY: ABDULLAH QURESHI



Color

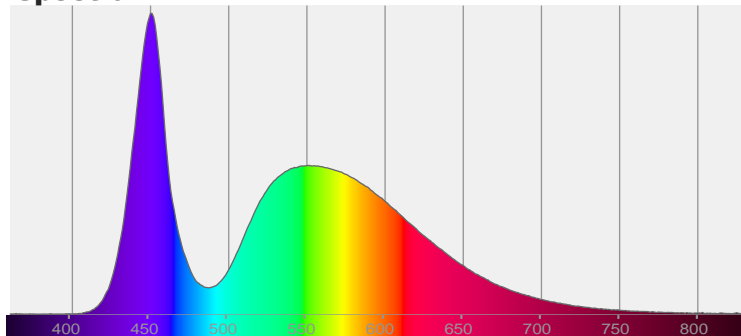


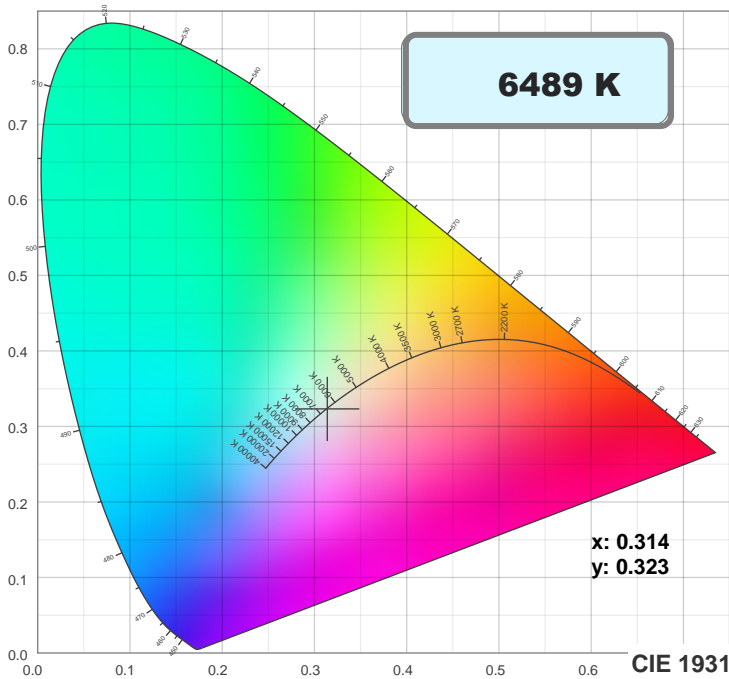
CIE 1931

x: 0.314

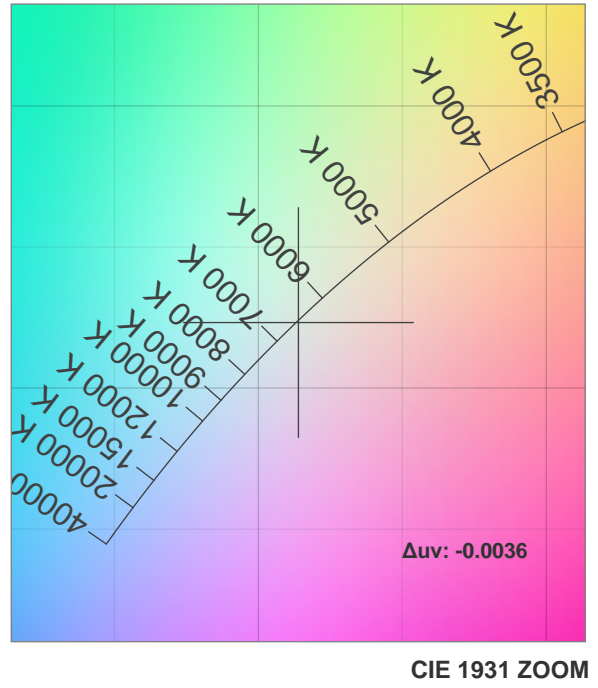
y: 0.323

Spectra

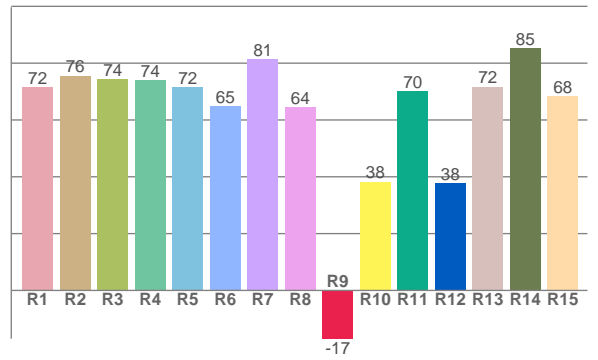
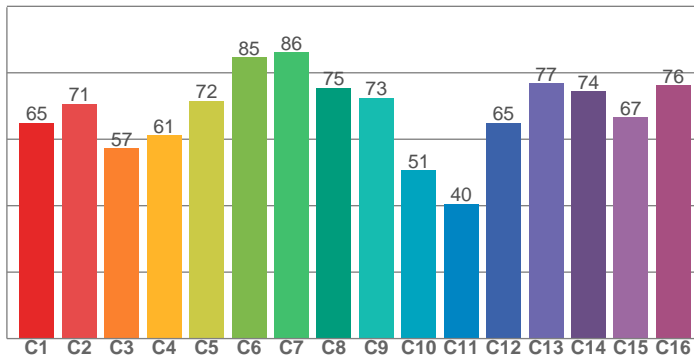




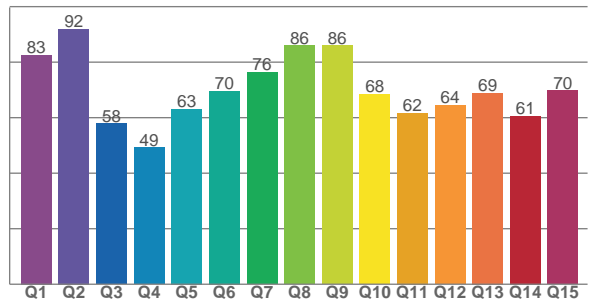
TM30: 67.8



CRI: 72.2 (R1-R8)



CQS: 68.3



CRI R values, only R1-R8 are used to calculate final CRI value

R1	R2	R3	R4	R5	R6	R7	R8	R9	R10	R11	R12	R13	R14	R15
71.6	75.5	74.4	74.0	71.6	64.9	81.3	64.5	-17.0	38.2	70.1	37.7	71.7	85.3	68.5

TM30 C values, 16 binned values out of total of 99 C values

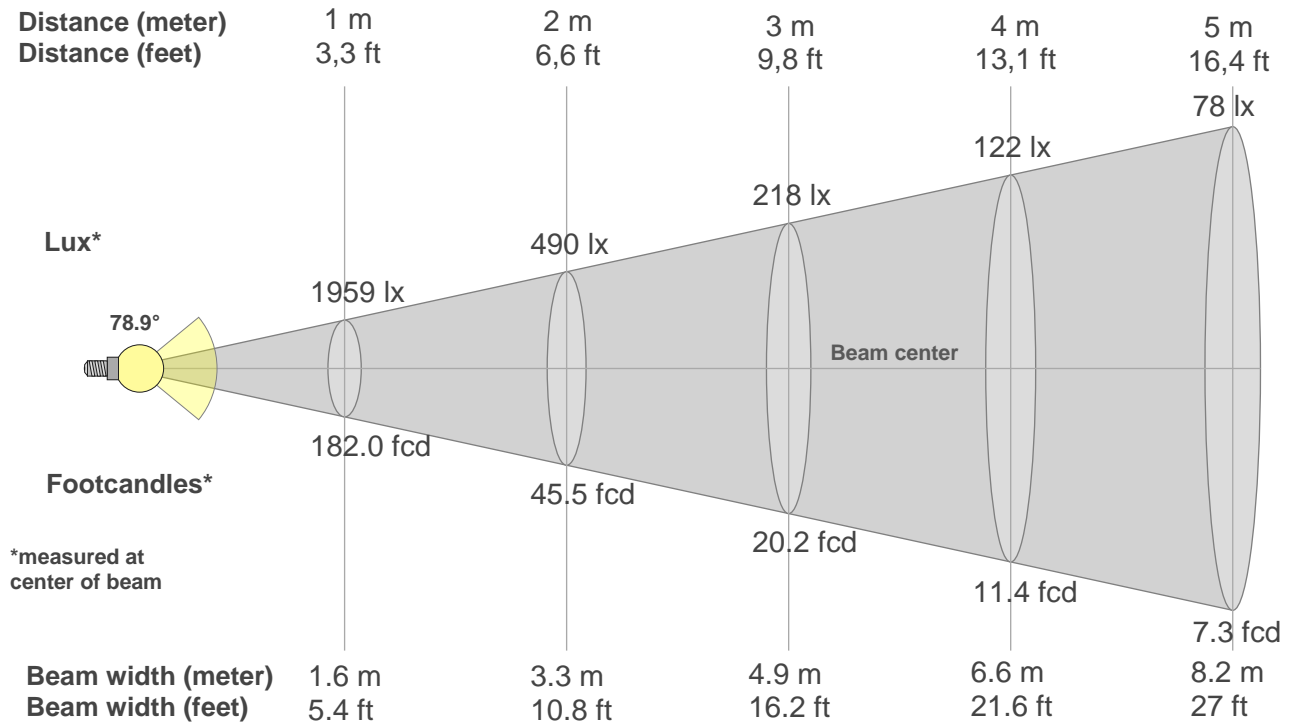
C1	C2	C3	C4	C5	C6	C7	C8	C9	C10	C11	C12	C13	C14	C15	C16
65.0	70.7	57.3	61.2	71.6	84.6	86.1	75.4	72.5	50.7	40.5	64.9	76.8	74.4	66.5	76.2

CQS Q values

Q1	Q2	Q3	Q4	Q5	Q6	Q7	Q8	Q9	Q10	Q11	Q12	Q13	Q14	Q15
82.5	92.0	57.8	49.2	63.1	69.7	76.4	86.0	86.0	68.4	61.7	64.4	68.9	60.6	69.8

Color parameters

Color temperature	Color rendering index	Red component	Color fidelity	Color gamut	Color quality scale	Color coordinate cie 1931	Color coordinate cie 1931	Color coordinate	Color coordinate	Color deviation from black body
CCT	CRI	CRI R9	TM30 Rf	TM30 Rg	CQS	x	y	u	v	Δuv
6489 K	72.2	-17.0	67.8	93.8	68.3	0.314	0.323	0.201	0.310	-0.0036



Beam intensities from 1-20m

1m	2m	3m	4m	5m	6m	7m	8m	9m	10m	11m	12m	13m	14m	15m	16m	17m	18m	19m	20m
3.3ft	6.6ft	9.8ft	13.1ft	16.4ft	19.7ft	23ft	26.2ft	29.5ft	32.8ft	36.1ft	39.4ft	42.7ft	45.9ft	49.2ft	52.5ft	55.8ft	59.1ft	62.3ft	65.6ft
1959lx	490lx	218lx	122lx	78lx	54lx	40lx	31lx	24lx	20lx	16lx	14lx	12lx	10lx	9lx	8lx	7lx	6lx	5lx	5lx
182fcd	45.5fcd	20.2fcd	11.4fcd	7.3fcd	5.1fcd	3.7fcd	2.8fcd	2.2fcd	1.8fcd	1.5fcd	1.3fcd	1.1fcd	0.9fcd	0.8fcd	0.7fcd	0.6fcd	0.6fcd	0.5fcd	0.5fcd

Intensities in 0° c-plane

0°	5°	10°	15°	20°	25°	30°	35°	40°	45°	50°	55°	60°	65°	70°	75°	80°	85°	90°	95°
1959	1901	1818	1813	1835	1812	1676	1376	1007	661	399	244	160	113	82	59	41	27	22	0
100%	97%	93%	93%	94%	92%	86%	70%	51%	34%	20%	12%	8%	6%	4%	3%	2%	1%	1%	0%

Intensities in 90° c-plane

0°	5°	10°	15°	20°	25°	30°	35°	40°	45°	50°	55°	60°	65°	70°	75°	80°	85°	90°	95°
1959	1903	1825	1814	1812	1747	1589	1320	999	695	444	274	176	121	86	61	42	28	22	0
100%	97%	93%	93%	92%	89%	81%	67%	51%	35%	23%	14%	9%	6%	4%	3%	2%	1%	1%	0%

Intensities in 180° c-plane

0°	5°	10°	15°	20°	25°	30°	35°	40°	45°	50°	55°	60°	65°	70°	75°	80°	85°	90°	95°
1959	1901	1818	1813	1835	1812	1676	1376	1007	661	399	244	160	113	82	59	41	27	22	0
100%	97%	93%	93%	94%	92%	86%	70%	51%	34%	20%	12%	8%	6%	4%	3%	2%	1%	1%	0%

Intensities in 270° c-plane

0°	5°	10°	15°	20°	25°	30°	35°	40°	45°	50°	55°	60°	65°	70°	75°	80°	85°	90°	95°
1959	1903	1825	1814	1812	1747	1589	1320	999	695	444	274	176	121	86	61	42	28	22	0
100%	97%	93%	93%	92%	89%	81%	67%	51%	35%	23%	14%	9%	6%	4%	3%	2%	1%	1%	0%

Beam angle 50%	Field angle 10%	Cutoff angle 2,5%	Intensity ratio in 120° cone	Intensity ratio in 90° cone
78.9°	115.4°	155.4°	89.7%	76.8%